



ASSEMBLY INSTRUCTIONS

Photo Real Scale Building Kit by **INNOVATIVE**
HOBBY SUPPLY

**Dyno
Xtreme**

READ ALL STEP BY STEP INSTRUCTIONS

- A new alternative to plastic form scale building models!
- Photo Real Scale Building kits may be the most realistic kits available!
- Great for use on model dioramas, slot car, and train track layouts!
- Designed using real building elements for the most realistic appearance



Footprint Dimensions

Model Base
8" x 11"

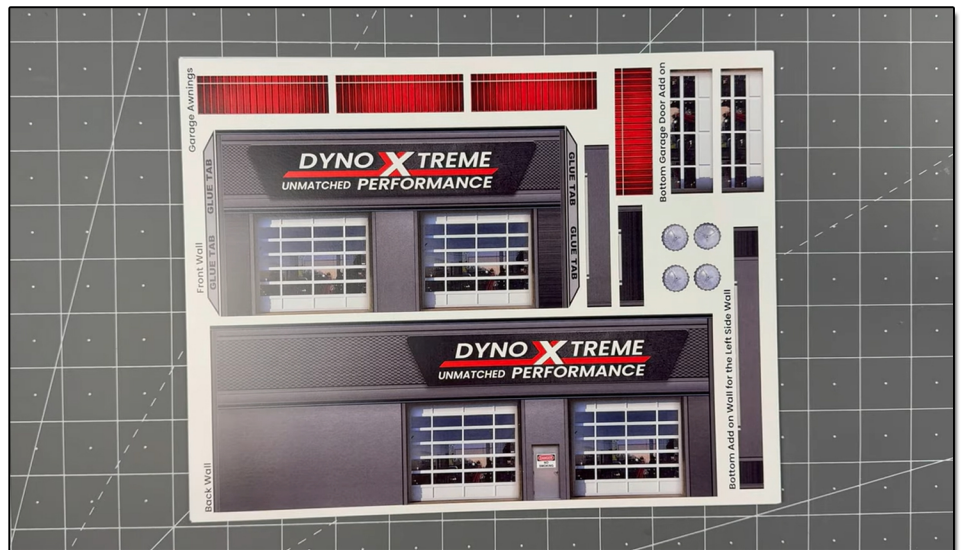
Dyno Xtreme Kit

All scale building kits offer many optional features, for a variety of creative ways to complete each project!

Free replacement parts are available call: 866-712-4059



Cut out all components and place in a safe area and place all parts in a tray so you do not lose any.



STEP 1 - Collect the correct tools.

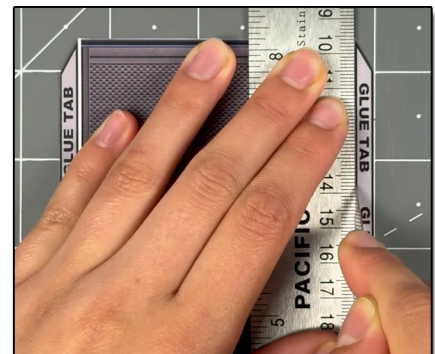
For best results, we suggest you gather at least the most basic tools you will need to complete assembly. While you may find more tools that will help you achieve outstanding results, we suggest you start with the following: Hot glue gun, scissors, variety of water based colored markers, tweezers, straight edge rulers, hobby knife, instant setting high strength hobby glue Plus 4ea, Hot Glue Sticks



STEP 3 - With appropriate color markers, detail the edges of all the parts you cut out. This will result in a finely finished project once assembled.

STEP 2 - Empty contents of the kit, carefully cut out all the individual parts to be assembled with a Scissors. The most precise cuts you can make will result in a dramatically better looking finished project. Use smooth long scissor strokes on the bigger parts.

STEP 4 - **Scoring.** Using a Hobby Knife (see picture) and a straight-edge ruler, apply lighter Blade pressure onto the marked fold line on the part you wish to fold. Scoring along these lines to be bent makes bending all printed parts easier, and results in a much cleaner looking fold. Bend parts using the length of your straightedge ruler or a desk edge
Scoring is an essential skill. Practice on Scrap piece.





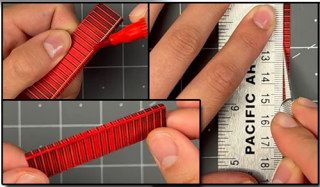
ASSEMBLY INSTRUCTIONS

Photo Real Scale Building Kit by

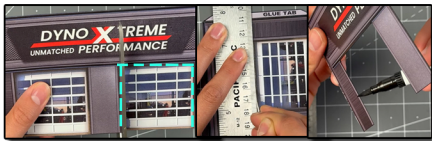
INNOVATIVE
HOBBY SUPPLY

Dyno
Xtreme

TIP: Look Ahead At All
Photos For Extra Guidance



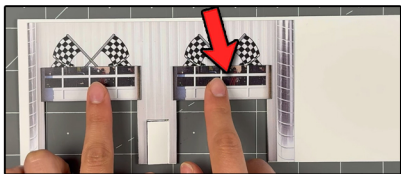
STEP 5 - With scale building kits, there is usually no correct place to begin. In this case, we'll start by prepping the red awnings. Score the white line with a hobby knife and ruler. Fold the tab on top downwards. Afterwards, touch up the scored seam with a red watercolor marker. Make sure to touch up the outer edges as well.



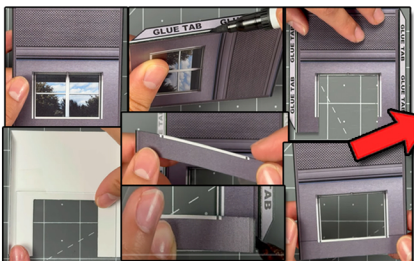
STEP 8 - Then with a pair of scissors, start by lining up the scissors at the bottom side of a garage door, cut upwards, until the top of the garage door. Do this to both sides, and to the other garage door. Cut the top part of the garage door with a hobby knife and ruler. Use a black marker to touch up the inside cut edges.



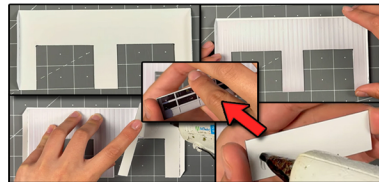
Step 11 - Flip over to the front side, and collect the 2D add on sign. Place small amounts of hot glue around/on top of the original sign. Then place the add on sign evenly on top. Do this to the back wall too.



STEP 14- Connect the top right side wall on to the front walls glue tab lining the walls evenly together.



STEP 6 - Next, collect the right side wall divider. Score the glue tab on the left with a hobby knife and ruler. Touch up the scored seam with a gray watercolor marker. Then remove the inside part of the right window with a hobby knife and ruler, avoid cutting the walls and the window frames.



STEP 9 - Once the garage doors are removed, flip over the wall so the front side is facing you. Grab the front inside wall (with the cut out section already removed) and place it evenly on top of the white side of the front wall, lining up the open garage sections and the bottom part of the walls together. Hold one side, and with the other hand lift up the other half carefully, while placing hot glue on top of the white side of the wall. Press down. And repeat on the other side to secure the walls together.



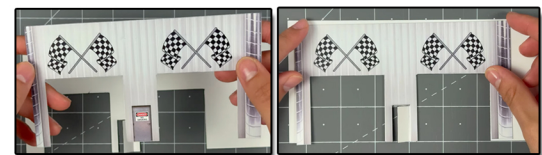
STEP 12 - After, with the back wall, remove the garage doors using the same steps in step 8. Once removed and touched up, let's open the back door. Score with a hobby knife and ruler on the left side of the door. Cut, using scissors the right side of the door from bottom to top. Cut the top of the door using a hobby knife and ruler. Gently push open. And touch up any white edges with a dark marker.



Step 7 - Grab the the front wall and score both sides of the glue tabs with a hobby knife and ruler. Fold inwards, and touch up with a black watercolor marker.



Step 10 - Then collect four pieces of the bottom add on garage doors and glue each pair on to the backs of each other using hot glue. Once that is done, place the garage doors evenly on top of the open garage sections, like shown in the image above. Place small pieces of scotch tape around it, carefully re-tape to re-adjust if needed.

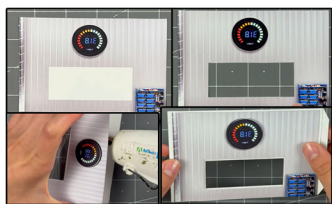


STEP 13 - Flip over the back wall, so the white side is facing you. And collect the back inside wall (with the garage doors and back door removed already). Place the back inside wall evenly on top lining up the bottoms of the walls and the open garage door sections evenly together. Hold one side, and with the other hand lift up the other half carefully, while placing hot glue on top of the white side of the wall. Press down. And repeat on the other side to secure the walls together.

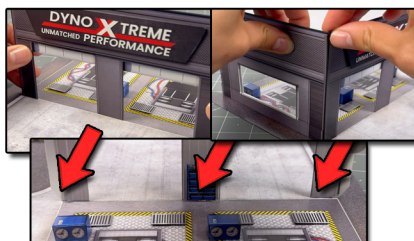
STEP 15- Moving forward. Grab the right side wall and remove only the inside part of the window. Use scissors to create slits on both sides of the window by lining up the inside part of the window with the bottom of the wall. Then cut the top of the inside part of the window with a hobby knife and ruler. Touch up the cut edges. Flip over so the white side is facing you. Grab the window material included in the kit. Keep in mind the window material is for all of the windows on the building, so cut thoughtfully. Cut a piece of window material that slightly overlaps all sides of the open section. Take off the wrapper on both sides until see through. And place on top evenly, lining it up with the bottom of the wall. Secure with scotch tape, then flip over to the front side. Grab the bottom add on wall that matches the width of the wall. Place at the bottom, lining up the window frames together. Glue one side at a time to avoid unevenness.



STEP 16- For the front entrance wall, simply glue on the 2D add on sign to the original sign using hot glue. And put aside for later.



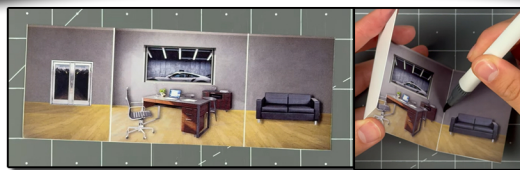
STEP 19- Once the left side wall window is installed. Grab the Left side inside wall and remove the white section out using a hobby knife and ruler. Touch up the cut inside edges. Afterwards, carefully place it on top of the back side of the left side wall, lining both the windows together. Hold one side, and left the other, while placing glue underneath. Repeat on other side until fully secured. Glue on any matching add ons.



STEP 22- Now it is time to secure the front wall on to the base. Line up the front wall on to the front of the base white line (where the driveway is). Place small amounts of hot glue behind the wall where the arrows are. Hold upwards until dried. Then Glue the left side wall on to the front walls glue tab using hot glue. Line up both walls evenly together. Then place a small amount of hot glue behind the side wall. Hold until dry.



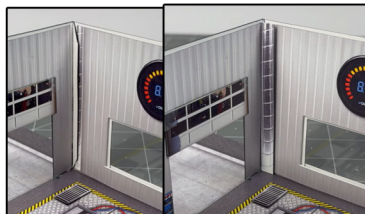
STEP 25- Secure the right side wall on to the front entrance wall using hot glue and the glue tab. Line up evenly together. Then place the illusion room right behind/against the back of the window. Secure with hot glue.



STEP 17- Afterwards, grab the illusion room and score the white lines on both sides with a hobby knife and ruler. Carefully fold the tabs towards you and touch up the scored seams with a gray marker.



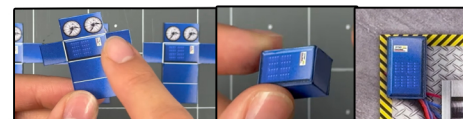
STEP 20- Grab the right corner side wall and remove the inside of the window. There's a bottom add on wall if you would like to use scissors to cut the sides. If not just use a hobby knife and ruler. Grab the Right side wall divider wall, and remove the right windows inside. Touch up with a black marker. And draw around the windows sides on the back side of the wall. Then place a cut piece of window material on top of the back side of the right side wall divider evenly, securing it with scotch tape. Place the Right corner side wall evenly on top of the other wall, lining up the windows open section. It should look like the image above (bottom left side) Hold one side firmly, and gently left up the other to place glue in between. Glue the other side. And put aside for later.



STEP 23- As you can see in the circled area. The corner you can see the glue tab. Let's cover the glue tab up with the 2D add on vent. Place glue along the glue tab secured against the corner of the walls, then place the 2D air vent on top, lining it up evenly from the bottom to the top. Do this to every future wall corner to cover up the glue tabs.



STEP 18- Now its time to prep the left side wall. Repeat the steps from step 15. Remove the inside part of the window. Afterwards, flip over and grab the left over window material. Cut a piece so it slightly overlaps the open window section. Place the window material on top. Secure, and flip over to the front side. Secure the bottom add on wall evenly on wall.



STEP 21- Collect all the 3D generators and score all the white lines with a hobby knife and ruler. Fold into a cuboid. Touch up all the outside edges and scored seams with a blue marker. Use hot glue to secure. Glue one side at a time. Place and secure on top of the original art located on the base.



STEP 24- Next grab the right corner side wall that we prepped earlier. And use the right glue tab on the front wall to connect the two walls together. Place hot glue behind the wall. Then place a 2D air vent on top of the cornered area to hide the glue tab connecting the two walls together. After grab the Front entrance wall and line it up against the front of the DO NOT SCORE tab (where the blue dotted line is up above). Secure by using the glue tab located on the front entrance wall. After place hot glue behind the wall. Hold until dried.

STEP 26- Afterwards, grab the back wall and secure it on to the glue tabs. Starting at one end and gluing one glue tab at a time. This helps avoid any unevenness. Place a small amount of hot glue behind the wall, and hold.

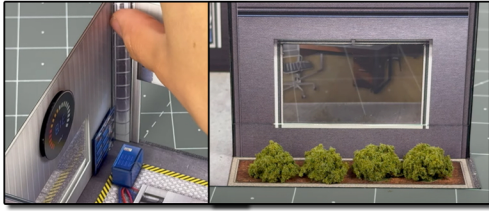


ASSEMBLY INSTRUCTIONS

Photo Real Scale Building Kit by

INNOVATIVE
HOBBY SUPPLY

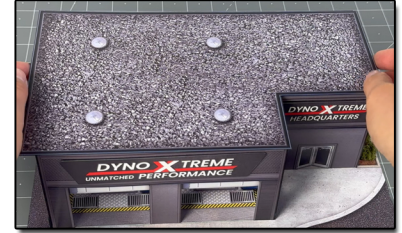
**Dyno
Xtreme**



STEP 27- Make sure to place a 2D air vent on all inside corners of the garage. Afterwards, create some bushes by the right side wall to add more realism, using the landscape moss included in the kit. Secure on the base by using hot glue.



STEP 28 - Then grab the add on parking lot base. Line up against the back of the building. And secure the 2D add on parking lot bumpers on to the original art using hot glue.



STEP 29 - Place the roof on top, and the 2D roof vents on all four using hot glue. Make sure to line up evenly.



STEP 30 - After, place the red awnings above the garages, left and right side windows. Place them anywhere above them, just make sure to secure them all at the same height.

CHECK OUT THE LAST PAGE TO SEE THE FINAL RESULTS



ASSEMBLY INSTRUCTIONS

Photo Real Scale Building Kit by



**Dyno
Xtreme**



Front of Building



Left Side of Building



Right Side of Building



Rear of Building