



ASSEMBLY INSTRUCTIONS

Photo Real Scale Building Kit by **INNOVATIVE**
HOBBY SUPPLY

**Race Track
Express**

READ ALL STEP BY STEP INSTRUCTIONS

- A new alternative to plastic form scale building models!
- Photo Real Scale Building kits may be the most realistic kits available!
- Great for use on model dioramas, slot car, and train track layouts!
- Designed using real building elements for the most realistic appearance



Footprint Dimensions

Model Base
8" x 11"

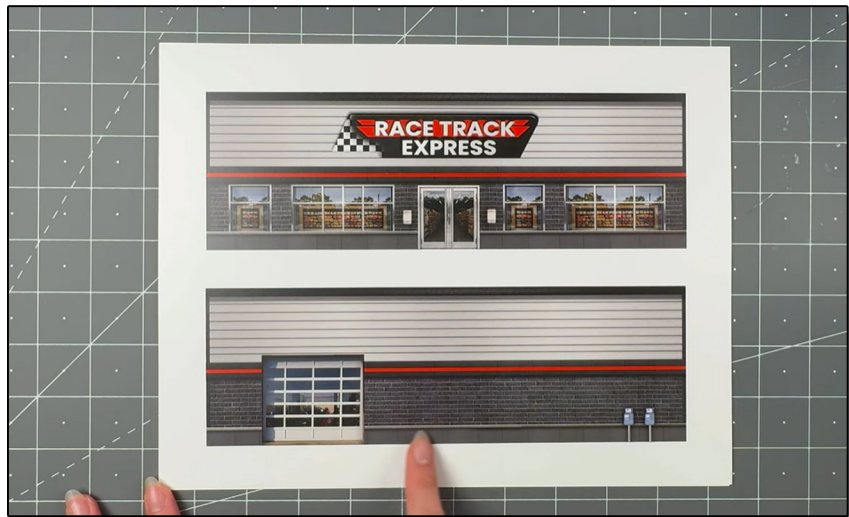
Race Track Express

All scale building kits offer many optional features, for a variety of creative ways to complete each project!

Free replacement parts are available call: 866-712-4059

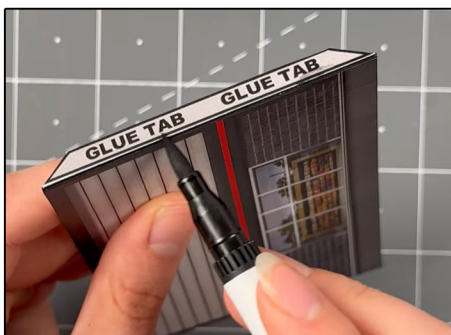


Cut out all components and place in a safe area and place all parts in a tray so you do not lose any.



STEP 1 - Collect the correct tools.

For best results, we suggest you gather at least the most basic tools you will need to complete assembly. While you may find more tools that will help you achieve outstanding results, we suggest you start with the following: Hot glue gun, scissors, variety of water based colored markers, tweezers, straight edge rulers, hobby knife, instant setting high strength hobby glue Plus 4ea, Hot Glue Sticks



STEP 3 - With appropriate color markers, detail the edges of all the parts you cut out. This will result in a finely finished project once assembled.

STEP 2 - Empty contents of the kit, carefully cut out all the individual parts to be assembled with a Scissors. The most precise cuts you can make will result in a dramatically better looking finished project. Use smooth long scissor strokes on the bigger parts.

STEP 4 - Scoring. Using a Hobby Knife (see picture) and a straight-edge ruler, apply lighter Blade pressure onto the marked fold line on the part you wish to fold. Scoring along these lines to be bent makes bending all printed parts easier, and results in a much cleaner looking fold. Bend parts using the length of your straightedge ruler or a desk edge
Scoring is an essential skill. Practice on Scrap piece.





ASSEMBLY INSTRUCTIONS

Photo Real Scale Building Kit by

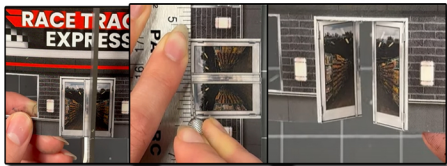
INNOVATIVE
HOBBY SUPPLY

Race Track Express

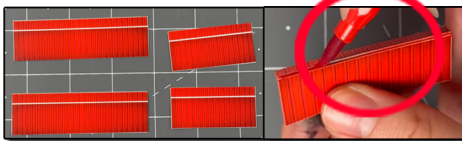
TIP: Look Ahead At All Photos For Extra Guidance



STEP 5 - For this step, let's prep the front wall. Cut out the inside part on all the windows. Using a hobby knife and ruler. When cutting, avoid cutting the outside window frames and the walls. Grab the window material, line up the left top corner of the material on to the window open sections. Trace a section of material to fit the open sections, letting about a 1/4 inch of overlap. Cut two identical pieces. Unwrap until see through. Lay over evenly on both sides, making sure there's room for future glue tabs on the outer sides of the wall. Secure the material with tape.



STEP 8 - Now let's open the door. Cut upwards in the middle of the door using scissors. Cut the top of the door with a hobby knife and ruler while leaving some door frame on top. Score the sides of the doors gently where the hinges are with a hobby knife and ruler. And gently push the doors inwards.



Step 11 - Next, grab all the red awnings, and score the white line with a hobby knife and ruler. Fold the tab downwards. Touch up the white edges and scored seams with a red marker.



STEP 14- Place the parking lot base up-front of the building. Lay the building slightly on top of the parking lot base. You can either leave it like this or secure both bases together using hot glue.



STEP 6 - Then grab both side walls and remove the inside parts of the windows using the same steps as step one. Use the left over window material we used for the front wall. Cut two pieces for the side windows. Once done, put aside for later.



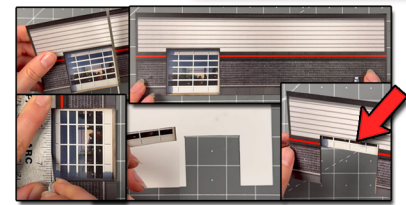
STEP 9 - On to the next step, grab all of the posters you want to use and glue them where ever you would like on the windows using hot glue.



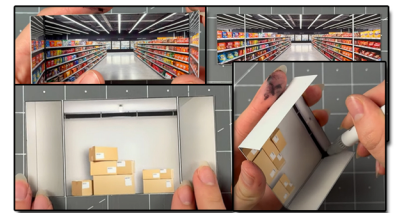
STEP 12 - After, grab the base and line up the front wall on to the white line facing the side walk. Place small amounts of hot glue behind the wall, hold upwards until dry. Then secure the side walls on to the front wall, lining both walls evenly together, using hot glue. Place hot glue behind the side walls to secure with base.



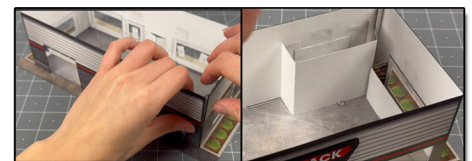
STEP 15- Then secure the correct length red awnings above the windows using hot glue. Line up evenly with the length of the windows. After create bushes on both sides of the base using hot glue and the landscape moss included in the kit. Once that's done use hot glue to secure the 2D parking bumpers evenly on to the original art.



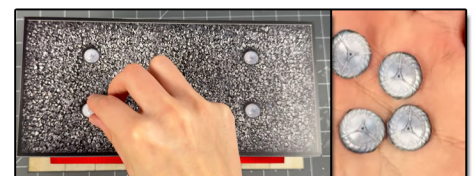
Step 7 - After, let's open the garage on the back wall. Use scissors to create slits on both outer sides on the garage door. For the top cut using a hobby knife, avoid cutting the garage door outer frames. Flip over so the white side is facing you, and place the bottom garage piece included in the kit on top of the open section, overlapping it slightly. Secure evenly using tape.



Step 10 - Afterwards, collect all illusion rooms and score the right and left white lines with a hobby knife and ruler GENTLY. Fold the sides inwards. And touch up the scored seams with a corresponding watercolor marker.



STEP 13 - Now secure the back wall on to the rest of the building. Gluing one side at a time to avoid any unevenness. Then secure the correct illusion room on to the correct sides, right against what its suppose to be with. The side walls, front walls, and the garage. Secure to base by placing a small amount of hot glue behind each one.



STEP 16- Lastly, grab the roof add on vents and glue them on to the original art using hot glue. And we are done! Go to the last page to see the final results.



ASSEMBLY INSTRUCTIONS

Photo Real Scale Building Kit by

INNOVATIVE
HOBBY SUPPLY

**Race Track
Express**



Front of Building



Left Side of Building



Right Side of Building



Rear of Building