



ASSEMBLY INSTRUCTIONS

Photo Real Scale Building Kit by **INNOVATIVE**
HOBBY SUPPLY

**Suburban
House**

READ ALL STEP BY STEP INSTRUCTIONS

- A new alternative to plastic form scale building models!
- Photo Real Scale Building kits may be the most realistic kits available!
- Great for use on model dioramas, slot car, and train track layouts!
- Designed using real building elements for the most realistic appearance



Footprint Dimensions

Model Base
8" x 11"

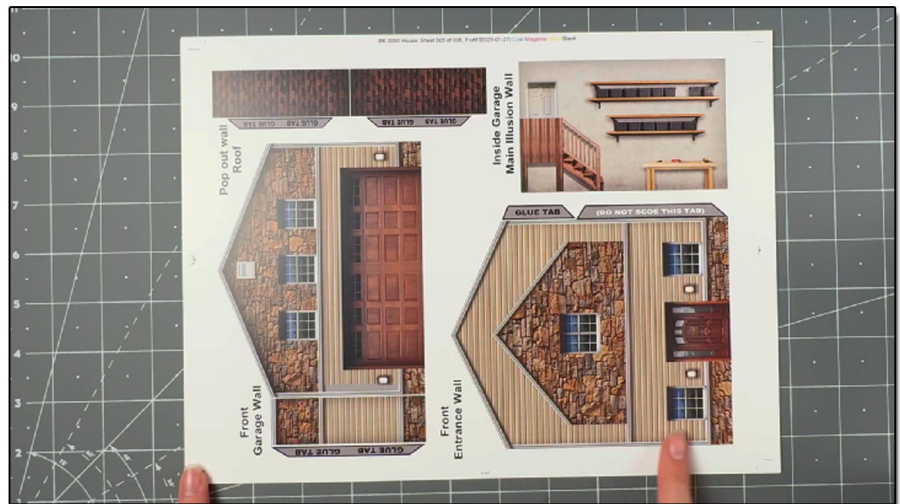
Suburban House Kit

All scale building kits offer many optional features, for a variety of creative ways to complete each project!

Free replacement parts are available call: 866-712-4059

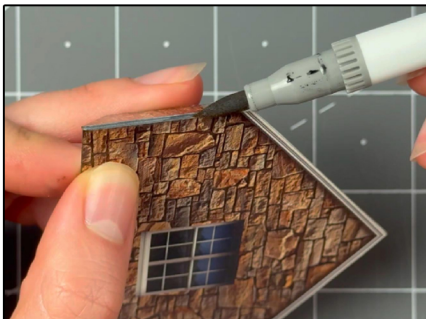


Cut out all components and place in a safe area and place all parts in a tray so you do not lose any.



STEP 1 - Collect the correct tools.

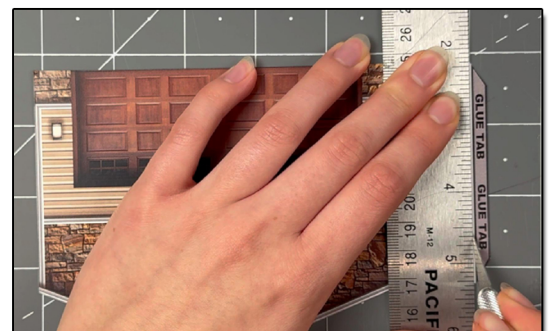
For best results, we suggest you gather at least the most basic tools you will need to complete assembly. While you may find more tools that will help you achieve outstanding results, we suggest you start with the following: Hot glue gun, scissors, variety of water based colored markers, tweezers, straight edge rulers, hobby knife, instant setting high strength hobby glue Plus 4ea, Hot Glue Sticks



STEP 3 - With appropriate color markers, detail the edges of all the parts you cut out. This will result in a finely finished project once assembled.

STEP 2 - Empty contents of the kit, carefully cut out all the individual parts to be assembled with a Scissors. The most precise cuts you can make will result in a dramatically better looking finished project. Use smooth long scissor strokes on the bigger parts.

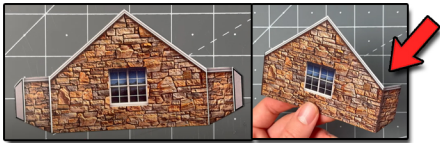
STEP 4 - **Scoring.** Using a Hobby Knife (see picture) and a straight-edge ruler, apply lighter Blade pressure onto the marked fold line on the part you wish to fold. Scoring along these lines to be bent makes bending all printed parts easier, and results in a much cleaner looking fold. Bend parts using the length of your straightedge ruler or a desk edge
Scoring is an essential skill. Practice on Scrap piece.



TIP: Look Ahead At All Photos For Extra Guidance



STEP 5 - With scale building kits, there is usually no correct place to begin. In this case, we'll start by prepping the garage illusion room. Grab the sides, score the glue tabs with a hobby knife and ruler. Fold the tabs 90 degrees towards you. Then grab the front wall of the illusion room. Glue the sides on to the back to the front wall evenly.



STEP 8 - Then grab the top front pop out wall and score the two small tabs and the glue tabs with a hobby knife and ruler. Fold inwards. Touch up the scored seams. Put aside for later.



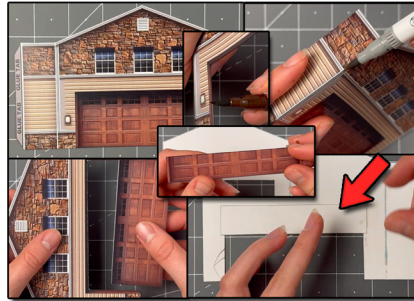
Step 11 - Now its time to score the front window illusion rooms. Score the two white lines with a hobby knife and ruler. Fold both sides towards you gently. Touch up the scored seams with a light colored marker.



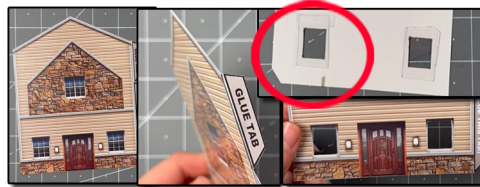
STEP 14- Connect the top right side wall on to the front walls glue tab lining the walls evenly together.



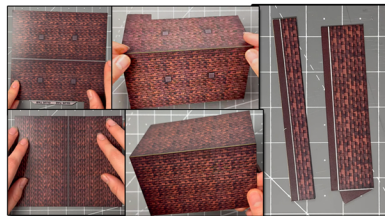
STEP 14- After securing the front wall, connect the left side wall on to front garage wall using the glue tab. Once that's secured, secure the garage illusion room right behind the garage open area. Place hot glue behind the illusion room to secure against base.



STEP 6 - On to the next step, grab the garage front wall. Score the white line and the glue tab. Fold the side and glue tab inwards, touch up the scored seams with a corresponding watercolor marker. Next remove the garage door. Use scissors to cut the sides and the top with a hobby knife and ruler. Flip over the wall so the white side is facing you. Place the small section garage included in the kit on top of the open section, secure with scotch tape.



STEP 9 - Grab the front wall and ONLY score the top small glue tab. Fold inwards. Touch up the scored seam with a watercolor marker. Cut the inside part of the bottom front windows, Avoid cutting the window frames and walls. Cut with a hobby knife and ruler. Flip over so the white side is facing you. Place pieces of window material to fit the open sections that slightly overlap. Secure with tap.



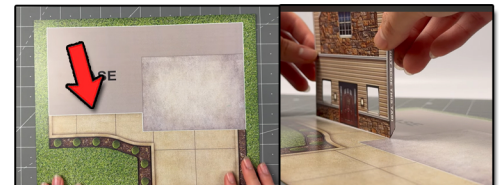
STEP 12 - After, grab the right roof. Score the white middle line, glue tab, and fold. For the awnings, score the white lines. Fold the small tabs downwards. Touch up with a brown marker.



Step 7 - Grab the top right side wall and score the glue tab with a hobby knife and ruler, fold inward. Touch up the scored seam and outer edges with a watercolor marker.



Step 10 - Place the 2D add on menu on to the original art located on the right side wall, then add the drive through small sign on the wall. After place posters on to the windows however you like. Have fun with this step! Then grab the second base with the parking lots and add the parking bumps on to the original art, using hot glue.



STEP 13 - Next, grab the base. Line up the front wall where the arrow is pointing. Line up with the white line. Place small amounts of hot glue behind the wall. Hold straight up until dried.



STEP 16- Place the roof on top. Then glue the awning above the garage using hot glue.

STEP 15- Secure the right side wall on to the back of the front wall. Place hot glue behind the wall. Hold until dry. Then secure the back wall on to the rest of the building. Glue one side at a time to avoid any unevenness. Then connect the top right side wall on the back of the back wall evenly.

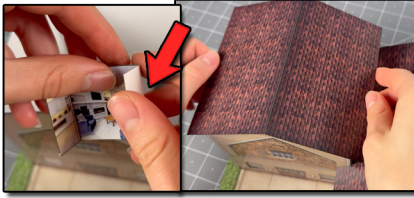


ASSEMBLY INSTRUCTIONS

Photo Real Scale Building Kit by

INNOVATIVE
HOBBY SUPPLY

**Suburban
House**



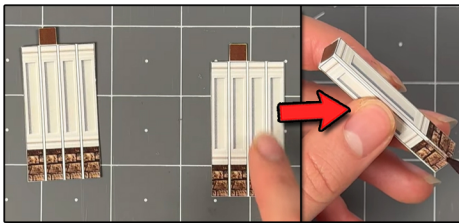
STEP 17- Afterwards, place the illusion rooms behind the the front windows. And secure with hot glue



STEP 18- Now its time to secure the front awning using the small glue tab. Place on to the white house trim. Line up evenly



STEP 19- Grab the top front pop out wall and secure it on to the original art on the front wall using the small glue tabs. Then place the pop out roof evenly on top.



STEP 20- Lastly grab the two pillars. Score all the white lines with a hobby knife and ruler. Fold into a cuboid. Use hot glue to secured. Touch up the score seams on the bottom with a brown marker.



STEP 21- After assembling them, place them on to the bottom of the front awning.

GO TO THE LAST PAGE TO SEE THE FINAL RESULTS



ASSEMBLY INSTRUCTIONS

Photo Real Scale Building Kit by

INNOVATIVE
HOBBY SUPPLY

**Suburban
House**

Front of Buildings



Left Side of Building



Right Side of Building



Rear of Buildings