



ASSEMBLY INSTRUCTIONS

Photo Real Scale Building Kit by **INNOVATIVE**
HOBBY SUPPLY

**Burgers
on Fire**

READ ALL STEP BY STEP INSTRUCTIONS

- A new alternative to plastic form scale building models!
- Photo Real Scale Building kits may be the most realistic kits available!
- Great for use on model dioramas, slot car, and train track layouts!
- Designed using real building elements for the most realistic appearance



Footprint Dimensions

Model Base
8" x 11"

Burgers on Fire Kit

All scale building kits offer many optional features, for a variety of creative ways to complete each project!

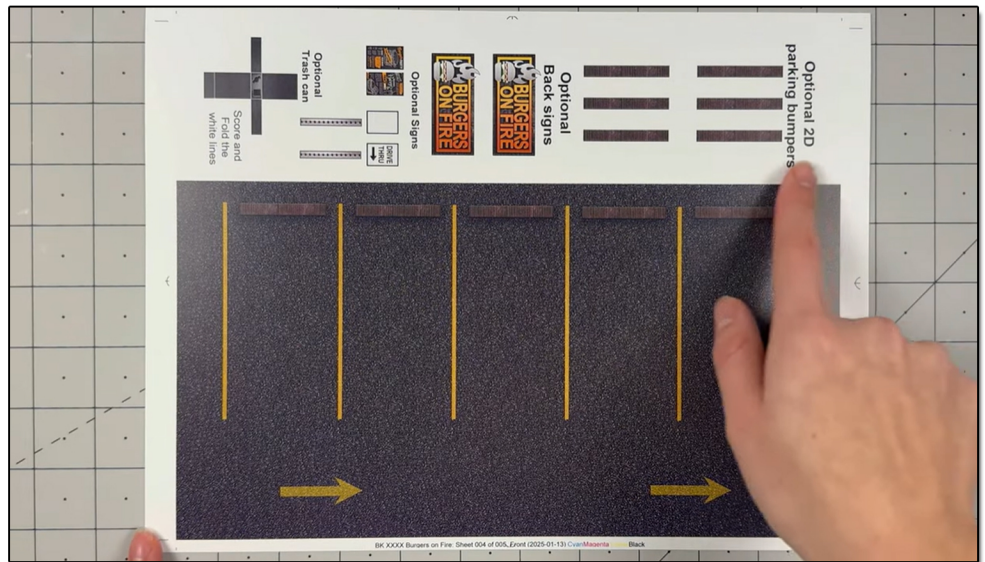
Cut out all components and place in a safe area and place all parts in a tray so you do not lose any.

Free replacement parts are available call: 866-712-4059



STEP 1 - Collect the correct tools.

For best results, we suggest you gather at least the most basic tools you will need to complete assembly. While you may find more tools that will help you achieve outstanding results, we suggest you start with the following: Hot glue gun, scissors, variety of water based colored markers, tweezers, straight edge rulers, hobby knife, instant setting high strength hobby glue Plus 4ea, Hot Glue Sticks

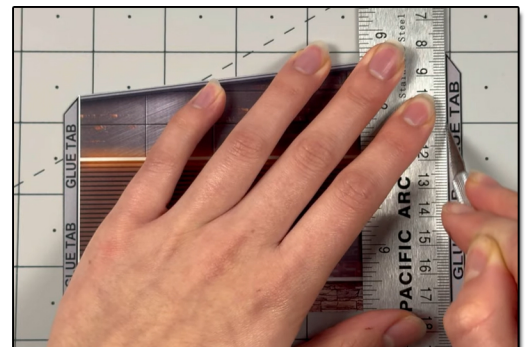


STEP 2 - Empty contents of the kit, carefully cut out all the individual parts to be assembled with a Scissors. The most precise cuts you can make will result in a dramatically better looking finished project. Use smooth long scissor strokes on the bigger parts.

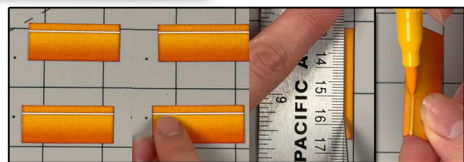
STEP 4 - **Scoring.** Using a Hobby Knife (see picture) and a straight-edge ruler, apply lighter Blade pressure onto the marked fold line on the part you wish to fold. Scoring along these lines to be bent makes bending all printed parts easier, and results in a much cleaner looking fold. Bend parts using the length of your straightedge ruler or a desk edge
Scoring is an essential skill. Practice on Scrap piece.



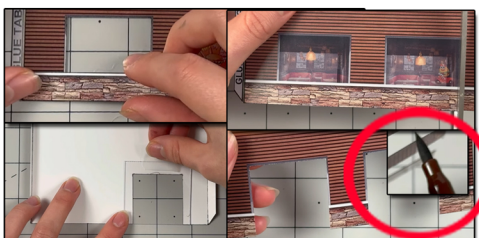
STEP 3 - With appropriate color markers, detail the edges of all the parts you cut out. This will result in a finely finished project once assembled.



TIP: Look Ahead At All Photos For Extra Guidance



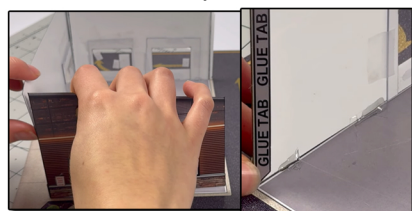
STEP 5 - With scale building kits, there is usually no correct place to begin. In this case, we'll start by prepping awnings. Score the white line for all of the five awnings with a hobby knife and ruler. Fold the small tab downwards. Touch up seam with yellow marker.



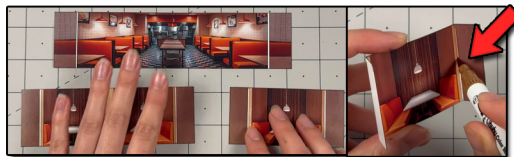
STEP 8 - Then for the side wall windows, cut upwards on both side using scissors. The cut the top using a hobby knife and ruler. Avoid cutting window frames. Flip over and cut a section of window material to slightly overlap the window open section, secure with scotch tape. Make sure the tape is not visible from the front side. Then apply the bottom add on walls, lining it up with the wall and window frame. Glue one side at a time to avoid unevenness.



Step 11 - Now its time to make the drive through sign. Grab the post and glue the post on to the backs of each other using hot glue Then place the front drive through sign on to the post using hot glue. After apply the back of the sign. Place it on the right side of the base by the bushes.



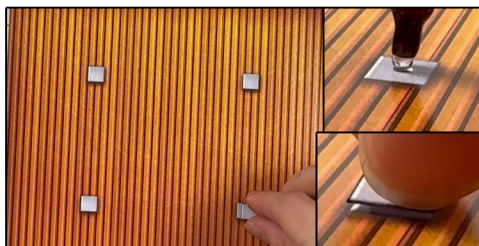
STEP 14- Connect the side walls on to the front wall using the glue tabs and hot glue. After place hot glue behind the side walls to secure against base evenly.



STEP 6 - On to the next step, grab all of the illusion rooms, score all the white lines with a hobby knife and ruler, fold the tabs inwards. The one with the small bottom tab, fold inwards flatly, touch up all the scored seams with a brown marker. And put aside for later.



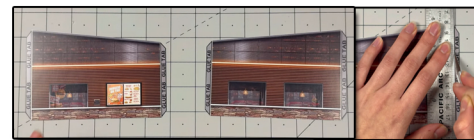
STEP 9 - Do the same thing to remove the inside part of the windows on the front wall. Once that is done and the window material and bottom wall is applied, let's open the front doors. Cut the middle of doors starting from the bottom to the top with scissors, then cut the top of the door with a hobby knife and ruler. Score the sides with a hobby knife and ruler. Look at the right top image above to see where to cut and score.



STEP 12 - After, place the 2D add on vents on top of the original vents on the roof using hot glue. Do this for all four roof vents. And put aside for later.



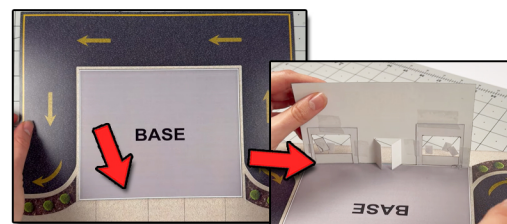
STEP 15- Then connect the back wal to the rest of the building, gluing one side at a time to avoid any unevenness. Afterwards, place the front illusion room close to the back of the front wall so the sides are touching, secure with glue. And place the correct side rooms behind the side windows.



Step 7 - Grab the side walls and score the glue tabs on both side with a hobby knife and ruler, fold the tabs inwards, touch up the scored seams with a brown watercolor marker



Step 10 - Place the 2D add on menu on to the original art located on the right side wall, then add the drive through small sign on the wall. After place posters on to the windows however you like. Have fun with this step! Then grab the second base with the parking lots and add the parking bumps on to the original art, using hot glue.



STEP 13 - Next, grab the base. Line up the front wall where the arrow is pointing. Line up with the white line. Place small amounts of hot glue behind the wall. Hold straight up until dried.



STEP 16- Place the roof on top. Then glue the awnings above the windows using hot glue. For the trash can, score all white lines, fold into a cuboid, touch up the lines with a gray marker, and place upfront of the kit. Lastly create some bushes up front with the landscape moss!



ASSEMBLY INSTRUCTIONS

Photo Real Scale Building Kit by

INNOVATIVE
HOBBY SUPPLY

**Burgers
on Fire**



Front of Buildings



Place the second base upfront of the main base
so you can display you hot wheel cars!



Left Side of Building



Right Side of Building



Rear of Buildings