



ASSEMBLY INSTRUCTIONS

Photo Real Scale Building Kit by **INNOVATIVE**
HOBBY SUPPLY

**Winners
Podium**

READ ALL STEP BY STEP INSTRUCTIONS

- A new alternative to plastic form scale building models!
- Photo Real Scale Building kits may be the most realistic kits available!
- Great for use on model dioramas, slot car, and train track layouts!
- Designed using real building elements for the most realistic appearance



Footprint Dimensions

Model Base
8" x 11"

Winners Podium
Foundation 5" x 9"

All scale building kits offer many optional features, for a variety of creative ways to complete each project!

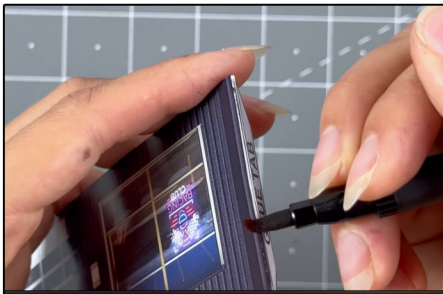
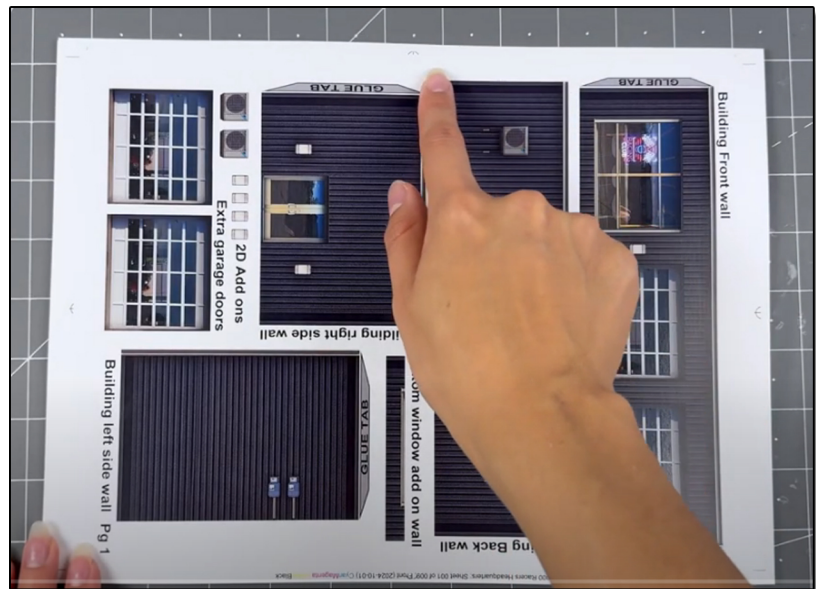
Cut out all components and place in a safe area and place all parts in a tray so you do not lose any.

Free replacement parts are available call: 866-712-4059



STEP 1 - Collect the correct tools.

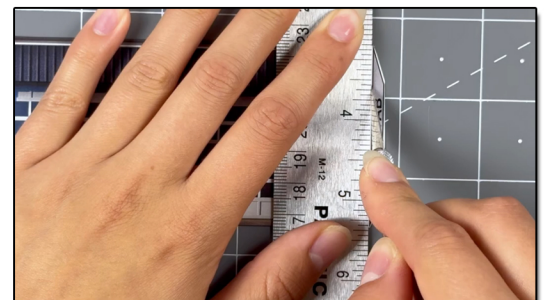
For best results, we suggest you gather at least the most basic tools you will need to complete assembly. While you may find more tools that will help you achieve outstanding results, we suggest you start with the following: Hot glue gun, scissors, variety of water based colored markers, tweezers, straight edge rulers, hobby knife, instant setting high strength hobby glue Plus 4ea, Hot Glue Sticks



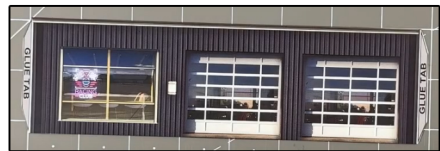
STEP 3 - With appropriate color markers, detail the edges of all the parts you cut out. This will result in a finely finished project once assembled.

STEP 2 - Empty contents of the kit, carefully cut out all the individual parts to be assembled with a Scissors. The most precise cuts you can make will result in a dramatically better looking finished project. Use smooth long scissor strokes on the bigger parts.

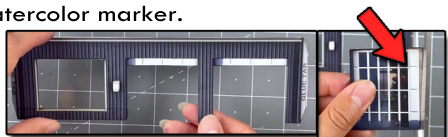
STEP 4 - **Scoring.** Using a Hobby Knife (see picture) and a straight-edge ruler, apply lighter Blade pressure onto the marked fold line on the part you wish to fold. Scoring along these lines to be bent makes bending all printed parts easier, and results in a much cleaner looking fold. Bend parts using the length of your straightedge ruler or a desk edge
Scoring is an essential skill. Practice on Scrap piece.



TIP: Look Ahead At All Photos For Extra Guidance



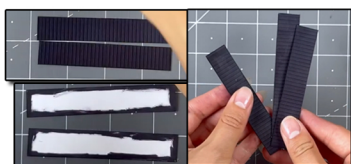
STEP 5 - With scale building kits, there is usually no correct place to begin. In this case, we'll start by prepping the Front building wall. Score the two glue tabs with a hobby knife and ruler. Fold the glue tabs 90 degrees inwards. Then touch up the scored seams and outer edges with a black watercolor marker.



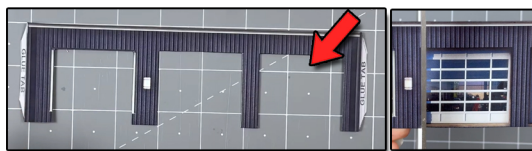
STEP 8 - Flip over the wall so the white side is facing you. Grab the inside front wall, cut out the parts that say cut out with scissors. Touch up the edges, and place it behind the front wall evenly. Secure with hot glue. Next grab the garage doors and the ones you cut out earlier, glue them on to the backs of each other. Cut them to your desired height depending how open you want the garage doors to look like. On the back of the front wall, tape the cut pieces on top of the garage door openings. Flip over to see the realism.



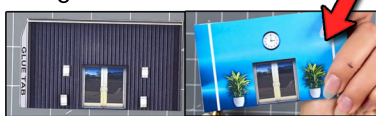
STEP 11 - Grab the back wall and the 2D add on vents. Place hot glue on to the original ones, then evenly place the 2D add on vent on top. Do this to the other vent. Put aside for later.



STEP 14 - For this step, grab the fences, flip over and draw on to the white outer edges with a dark watercolor marker. It does not have to be perfect, look at the image above to see an example. Doing this helps avoid any white parts showing when gluing together. After done coloring. Glue the matching sizes on to the backs of each other using hot glue. When securing drag your finger on top so it secures straight. Repeat for all three fences.



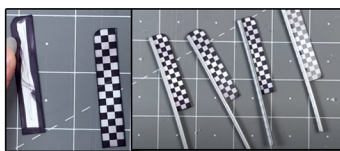
STEP 6 - Next, with a pair of scissors create slits on both sides of the garage doors, stop cutting at the top of the garage door. Then with a hobby knife and ruler cut the top of the garage doors off. Avoid cutting the walls at all times. Touch up the inside edges with a dark watercolor marker. Repeat the same steps to cut out the inside part of the window out. Start at the bottom of the wall, and create two slits. Avoid cutting the window frames. Then use a hobby knife to cut the top. Touch up with a marker. And it should look like the image above.



STEP 9 - On to the next step, grab the building left side wall, score the glue tab with a hobby knife and ruler. Touch up the seam with a dark watercolor marker. Then grab the inside left wall, place it on top behind the other wall. Lining up the bottoms together. Secure with hot glue. Make sure to not glue too close to the glue tab as it might interfere with it later on.



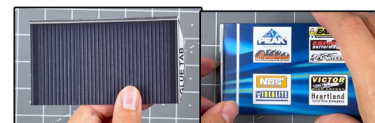
STEP 12 - After, grab the second level front wall, cut out the white section with a hobby knife and ruler. Touch up the inside edges with a dark marker. Flip over. Grab the other window material included in the kit. Measure the material so it fits behind the open section of the front wall, make sure it overlaps a little on every side so you can secure it against the back of the wall. Cut to the correct size, unwrap both sides. Place evenly on the back of the wall. Secure with tape.



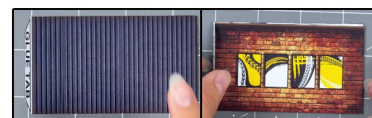
STEP 15 - Then grab the checkered flags, on the backs of every flag color the white outer edges with a black marker. Glue them on to the backs of each other. Then grab all four sign post. And glue them in between the post crack with hot glue. Repeat this for all four. Put aside for later.



Step 7 - After, flip over the wall so the white side is facing you, the far right opening on the wall (the window) place the smallest piece of window material included in the kit. Make sure to unwrap it first. Place it on top evenly. Secure with tape. Make sure the tape is invisible from the front side. Flip over so the art is facing you. And grab the bottom add on wall. Line it up evenly with the bottom of the window frames and wall. Secure on side at a time with hot glue to avoid any unevenness.



Step 10 - Do the same thing for the building right side wall, score the glue tab, fold, touch up. Then flip over and secure the inside left wall on top evenly. Secure with hot glue. Put aside for later.



STEP 13 - Next, grab second level side walls. Score the glue tabs, fold inwards. Touch up. Then grab the correct inside wall for it. And secure on to the back sides of the side walls. Use hot glue. Make sure before securing to not place it too close to the glue tabs, as it might interfere with it later on.



STEP 16 - Afterwards, the podium stage, score all the white lines and glue tabs. Also score the part where the ramp bends, look at the circled image above to see exactly where. Use a hobby knife and ruler. Fold all the sides downwards. Fold the glue tabs 90 degrees flat inwards from the sides. Touch up all of the scored seams with a dark gray and the correct color blue watercolor marker. Go to the next page to see the next step.



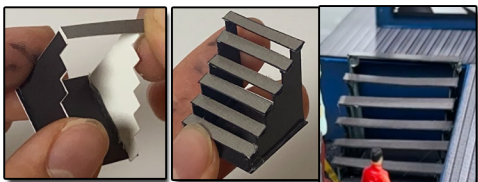
STEP 17- Then grab the back of podium, cut two small slits on the sides of the dark blue tab. Score the top of the dark blue tab and the glue tab below it with a hobby knife and ruler. Fold the tab inwards 90 degrees, fold the glue tab 90 degrees inwards from the tab. Touch up with a blue marker.



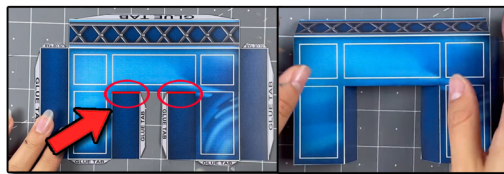
STEP 20- Now the podium bottom walls, score all of the glue tabs with a hobby knife and ruler. Fold all the tabs inwards. Touch up the scored seams with a marker.



STEP 23 - Place the podium on top of the stage, secure with hot glue, use the glue tabs. Then grab the checkered flags and place them anywhere you would like. Secure with hot glue.



STEP 26 - place a small amount of hot glue along the bottom of a stair side and glue it on the edge of the stair base that fits the same width. Glue both stair sides so it looks like the photo shown above. Place a small speck of glue on one end of the stair and the opposite end. Then place it on top across of each top indent of the stair sides. Place anywhere against the stage.



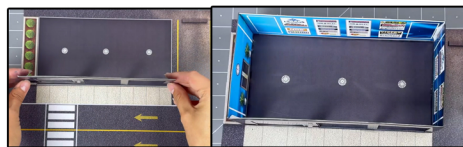
STEP 18- Next, for front of podium, score all the white lines and glue tabs. Create two slits here in the circled image above, with a pair of scissors. After fold everything inwards. Touch up with a blue watercolor marker.



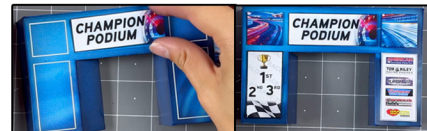
STEP 21- Now the podium stage, place hot glue on to the side back glue tab, glue the sides together on both ends. Then place down so the white side is facing you. Grab a bottom wall, place glue on the long tab. Place here in the circled image with the arrow above, glue against both side too. Line up evenly. Do this to the other side.



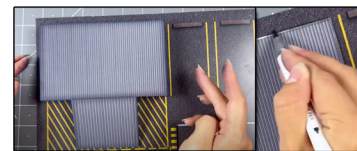
STEP 24 - Next grab the last flag post included in the kit. Cut to desired length for the flags. Grab the two matching flags, flip over one of the flags so the white side is facing you. Place the other matching flag on top in the correct direction. Place hot glue in between the flags. Touch up the flags sides with a corresponding watercolor marker. Then round the flags with a finger or pen. Repeat this step to all the flags. Place anywhere you would like.



STEP 27 - Grab the lower building walls, first glue the front wall on the white line evenly, facing the side walk. Place hot glue behind the wall. Hold upwards until dry. Then glue the side walls using the glue tabs. After glue the back wall on to the rest of the building. You can add a small amount of hot glue behind the walls to make it more secure.



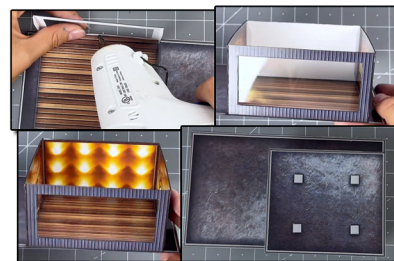
STEP 19- After, grab the optional signs, pick the ones you want. And glue them into the correct matching box with hot glue. Have fun customizing your winners podium!



STEP 22 - Grab the correct the base that looks like the image above. Take a gray marker, and lightly color the white lines around the area the podium goes on top of. After secure the podium stage on top evenly. Place the 2D base add ons on to the original art with hot glue.



STEP 25 - Next let's build the stairs for the stage. Grab the stairs base, stairs, and the stairs sides. First grab the stairs, and cut each individual stair off by following the black lines. Use scissors to cut each stair off carefully. Color the backs of each stair and the edges with a gray marker.



STEP 28 - Grab the main roof, glue the second level front wall here, the circled image above. Use hot glue. Then glue the side walls using the glue tabs. After glue the back wall on to the rest. Once that's done, grab the inside second level back wall and glue it evenly behind the back wall using hot glue to secure. Place the second level roof on top!

TIP: Look Ahead At All Photos For Extra Guidance



STEP 29- Now place the second level on top of the lower building evenly. I recommend to not glue the roofs on the building permanently so you can place cars in and out easily later on.



STEP 30 - Feel free to add more flags around the building, or even the optional red tool boxes included in the kit, simply score and fold the tabs into a cuboid and secure with hot glue. Don't forget to touch up the edges with a watercolor marker. Place anywhere!



STEP 31 - Grab the fence and glue the against the building like shown above. Use the correct lengths in the correct placement. Longer fence are the side ones, and the one shorter one at the left end. Use hot glue to secure.



STEP 32 - Grab the hangover plants score the white lines, glue into a cuboid. Touch up the white seams with a black marker. Add moss on top to create bushes. Place anywhere on the building/patio.



STEP 33 - Grab the table tops, touch up. Grab the black straw. Cut into small desired height pieces. Flip over the table top so the white side is facing you. Add hot glue in the middle, place a piece of black straw on top. Hold upwards until dry. Place however many tables on the patio.



GO TO THE LAST PAGE TO SEE THE FINAL RESULTS



ASSEMBLY INSTRUCTIONS

Photo Real Scale Building Kit by

INNOVATIVE
HOBBY SUPPLY

**Winners
Podium**



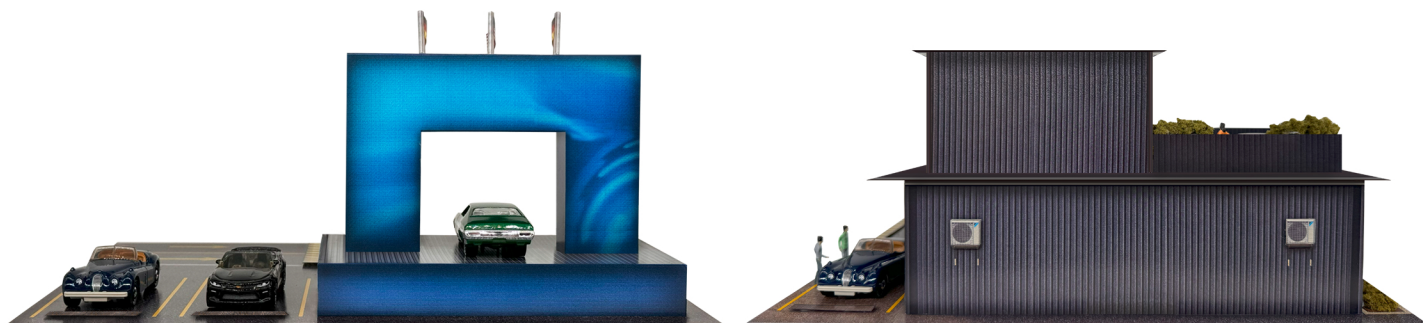
Front of Building



Left Side of Building



Right Side of Building



Rear of Building