



ASSEMBLY INSTRUCTIONS

Photo Real Scale Building Kit by



Racers
Headquarters

READ ALL STEP BY STEP INSTRUCTIONS

- A new alternative to plastic form scale building models!
- Photo Real Scale Building kits may be the most realistic kits available!
- Great for use on model dioramas, slot car, and train track layouts!
- Designed using real building elements for the most realistic appearance



Cut out all components and place in a safe area and place all parts in a tray so you do not lose any.

Footprint Dimensions

Model Base
8" x 11"

Racer's Headquarters
Foundation 5" x 9"

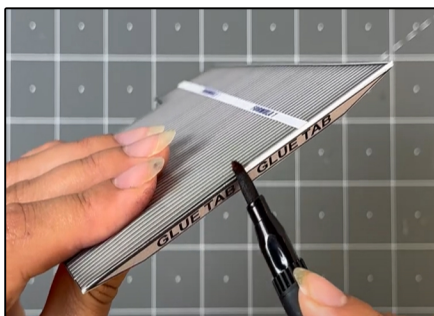
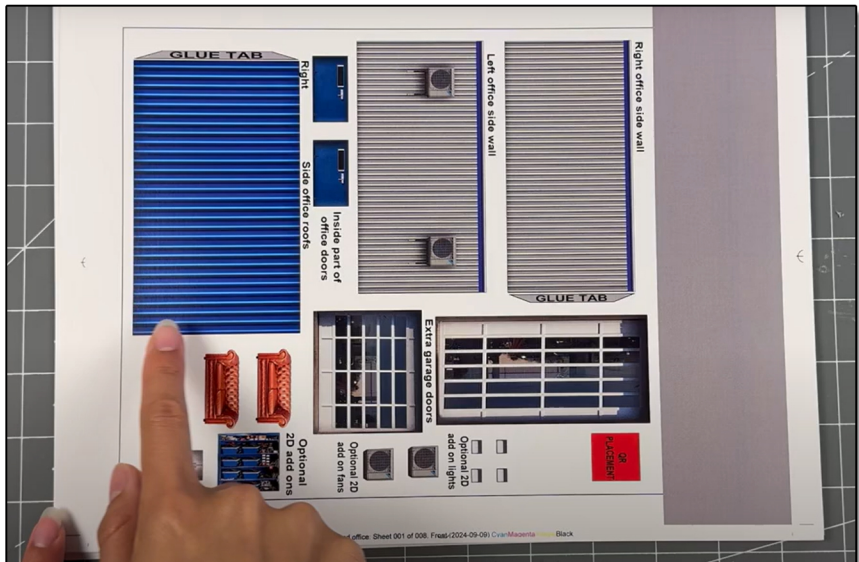
All scale building kits offer many optional features, for a variety of creative ways to complete each project!

Free replacement parts are available call: 866-712-4059



STEP 1 - Collect the correct tools.

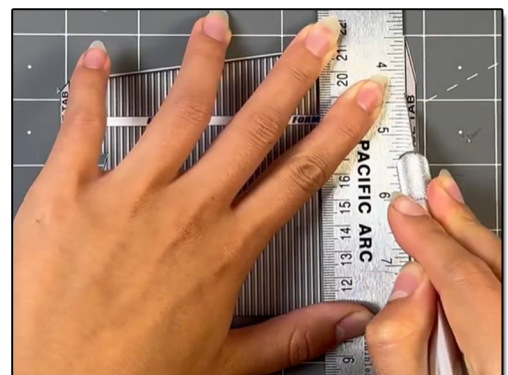
For best results, we suggest you gather at least the most basic tools you will need to complete assembly. While you may find more tools that will help you achieve outstanding results, we suggest you start with the following: Hot glue gun, scissors, variety of water based colored markers, tweezers, straight edge rulers, hobby knife, instant setting high strength hobby glue Plus 4ea, Hot Glue Sticks



STEP 3 - With appropriate color markers, detail the edges of all the parts you cut out. This will result in a finely finished project once assembled.

STEP 2 - Empty contents of the kit, carefully cut out all the individual parts to be assembled with a Scissors. The most precise cuts you can make will result in a dramatically better looking finished project. Use smooth long scissor strokes on the bigger parts.

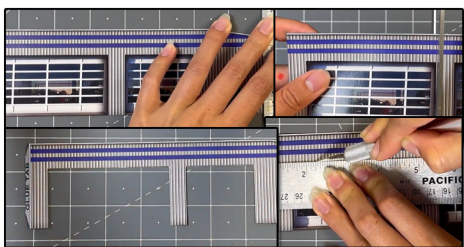
STEP 4 - **Scoring.** Using a Hobby Knife (see picture) and a straight-edge ruler, apply lighter Blade pressure onto the marked fold line on the part you wish to fold. Scoring along these lines to be bent makes bending all printed parts easier, and results in a much cleaner looking fold. Bend parts using the length of your straightedge ruler or a desk edge
Scoring is an essential skill. Practice on Scrap piece.



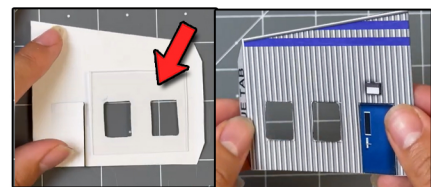
TIP: Look Ahead At All Photos For Extra Guidance



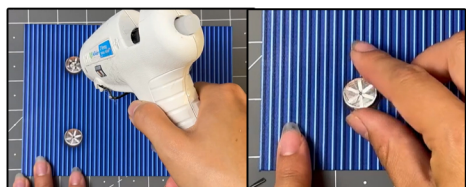
STEP 5 - With scale building kits, there is usually no correct place to begin. In this case, we'll start by prepping the inside outer walls, score all of the glue tabs with a hobby knife and ruler. After scoring fold the glue tabs all inwards, away from the wall. Touch up the scored seams with a dark watercolor marker, put aside for later.



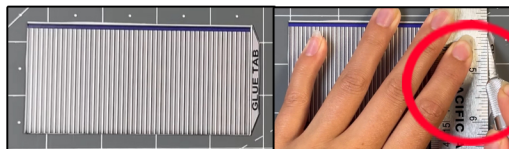
STEP 8 - Then grab the front wall, and a pair of scissors. Cut the sides of the garage doors with the scissors, avoid cutting the wall. After both sides have slits. Use a hobby knife and a ruler to cut the top of the garage doors, so the whole door comes off nicely. Touch up the inside cut edges with a dark watercolor marker. Score the right glue tab, fold inwards. **DO NOT** score the left side glue tab.



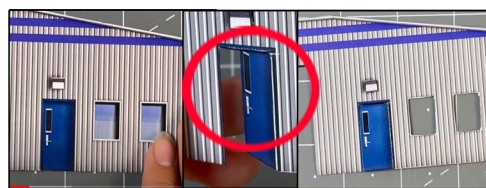
STEP 11 - Grab the left side front wall, flip over so the white side is facing you, grab a piece of window plastic, cut it so it covers the window openings evenly. Secure it with hot glue or tape. Make sure you can not see the glue from the front side of the wall.



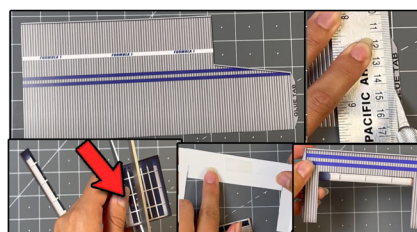
STEP 14- For this step, grab the roof and roof vents, place hot glue on to the original roof vent art, place a 2D roof vent on top evenly, do this for all four roof vents, put aside for later.



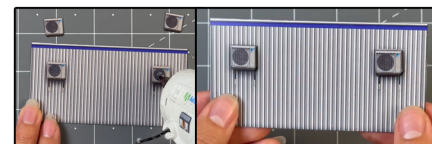
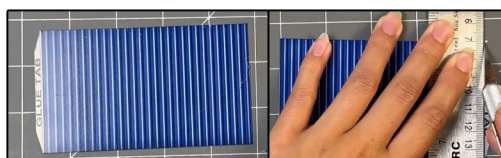
STEP 6 - Grab right office side wall, score the one glue tab with a hobby knife and ruler. Fold the glue tab gently inwards away from the wall, touch up the white scored seam with a gray watercolor marker, and put aside for later.



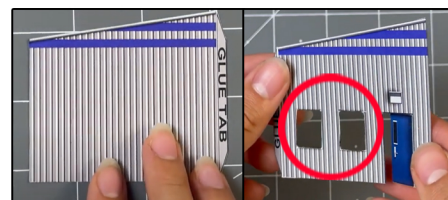
STEP 9 - On to the next step, cut the side of the door that opens with scissors, cut the top of the door with a hobby knife and ruler, then score the side of the door where the hinges are. Carefully push open the door inwards, touch up with a blue marker. After cut the inside of the windows out with a hobby knife and ruler. Touch up edges with a marker. Glue the 2D add on light on to the original art.



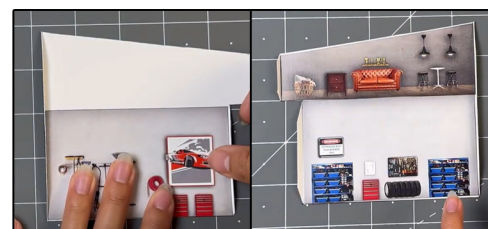
STEP 12 - After, grab the back wall, score the one glue tab with a hobby knife and ruler. Put aside for later. Grab the two extra garage doors, cut to desired height for the open garage illusion. Grab the small piece, flip over the front wall so the white side is facing you. Place the small garage door piece on top of the garage opening evenly, place tape to secure against the back of the front wall. Flip over to see if it looks good, if not flip over and adjust. Do this to both garages



Step 7 - Next collect the optional 2D add on vents, grab the left office side wall, place a small amount of hot glue on to the original vent art, then evenly place the 2D add on ones on top. Put aside for later.

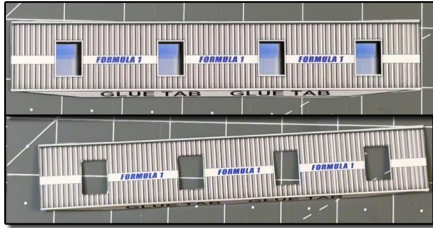


Step 10 - Now grab the front wall left side repeat the same steps as step 9. Open the door, and cut the inside part of the windows out. Then for the right side back wall, score the one glue tab, fold inwards.



STEP 13 - Next, grab the inside outer walls, the garage inside side walls, and both second level inside side walls. Flip over the inside outer walls so the white side is facing you, grab a garage inside wall, line up both walls bottoms evenly together, once evenly, secure with hot glue in between the walls. Then place the correct second level inside wall on top, line up the walls tops evenly together, secure. Repeat this step to the other inside outer wall.

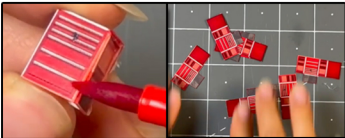
STEP 15- Then grab the side office roofs, score the glue tabs with a hobby knife and a ruler, fold the tab downwards. Touch up with a blue watercolor marker. Repeat this step for the other side office roof. Put aside for later. Go to the next page for more instructions.



STEP 16 - Afterwards, grab the second level front wall, score the long glue tab, fold nicely inwards. Then cut out the inside part of the windows. Flip over the wall so the white side is facing you. Cut four pieces of window plastic, and place them on top of the window openings on the back. Secure with tape or glue. Put aside for later.



STEP 19 - After, grab the bottom and top car lifts. Flip one over so the white side is facing you. Place hot glue on top, then place the other side of the car lift evenly on top. Repeat this step for the other car lift. For the hydraulic rams, round the paper with a pen or your finger, glue into a circle with hot glue. Put aside for later.



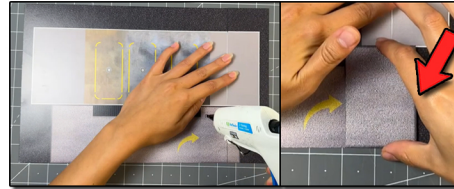
STEP 22 - Grab the tool boxes, score the white lines, fold into a cuboid. Secure the sides together into a box, touch up the white seams with a red watercolor marker. Do this to all red tool boxes. Secure them against the garage side walls where the original art ones are.



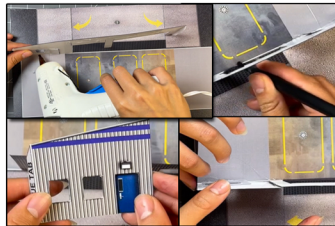
STEP 25 - Next grab the inside outer walls, the highest point on the angled wall faces the back of the building. Line up the correct wall along the base where the garage floor art ends. Do this to the other wall. Secure against the base, by placing hot glue behind the wall (closest to the office) **DO NOT SECURE AGAINST FRONT WALL YET.**



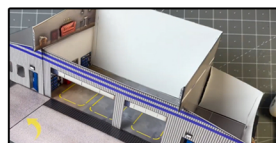
STEP 17 - Then grab all of the illusion rooms, score all of the white lines with a hobby knife and ruler. Score a little lighter than you usually would. Then fold the two sides 90 degrees inwards gently. Touch up the scored seams and the outer edges. Repeat this step for the other room. Go to next step.



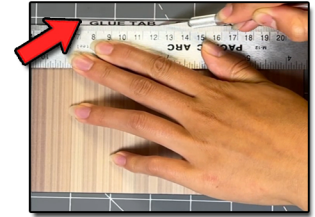
STEP 20 - Now grab the base, and the left side rest of base piece, line them up together evenly. Then place hot glue over the main base and add on base like in the circled area. Place the correct side pavement add on top to hold the two bases together. Repeat on the other side.



STEP 23 - Grab the front wall, line up the right end of the front wall with the right end side of the gray white lined rectangle. Line it up with the white line. Secure with small amounts of hot glue behind the wall. Avoid placing glue behind the front wall where its angled. Then grab the left side front wall. Secure it against the left side glue tab on the front wall. Line up with base, secure to base.



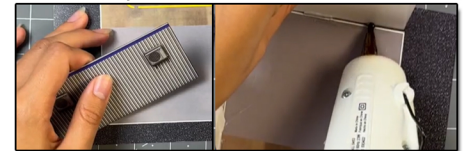
STEP 26 - Grab the back wall and secure it to the rest of the building (right ends line up together). Grab the right side of back wall, glue it to the back wall and the right side wall.



STEP 18 - Next, for the garage ceiling, score the big glue tab with a hobby knife and a ruler, fold the tab downwards nicely, touch up with a gray marker. Put aside for later.



STEP 21 - Now grab the garage ceiling and the bottom of second level, flip over the ceiling so the white side is facing you. Place the bottom second level on top evenly, lining up the bottoms together. (Place it at the opposite end of where the glue tab is.) Secure with hot glue.



STEP 24 - Then grab the left office side wall, secure it on to the left side front wall, place hot glue behind it, while lining it up with the white line on the base.



STEP 27 - Grab the garage inside back wall and secure it against the inside back wall of the garage. line up the bottoms together, secure with hot glue.



ASSEMBLY INSTRUCTIONS

Photo Real Scale Building Kit by **INNOVATIVE** HOBBY SUPPLY

**Racers
Headquarters**

TIP: Look Ahead At All Photos For Extra Guidance



STEP 28- Next, ignore the garage ceiling th photo, I've learned its best to secure the inside second level back wall on before. So this step let's do that! Line up the second level back wall to the top of the back inside wall evenly. Secure with hot glue.



STEP 29- Now place the garage ceiling inside like shown in the photo, line it up with the second level inside walls. Secure by using the glue tab. Place hot glue on it, line up with the inside back wall. Attach.



STEP 30 - Next, grab the second level front wall, line up with the front of the garage ceiling. Secure it on to the ceiling with the glue tab. Now grab the inside outer walls, the glue tabs, and place them evenly with the second level front wall. Secure them together.



STEP 31 - Lastly, place the roofs on top! Use the glue tabs on the side office roofs to secure against the building. For the top roof, line up and place hot glue underneath on the back side. So your still able to open it from the front. You can place model people inside or leave it as it is.

GO TO THE LAST PAGE TO SEE THE FINAL RESULTS



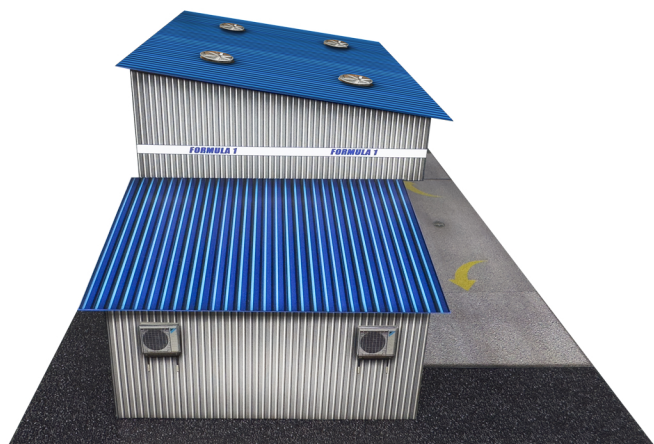
ASSEMBLY INSTRUCTIONS

Photo Real Scale Building Kit by **INNOVATIVE** HOBBY SUPPLY

**Racers
Headquarters**



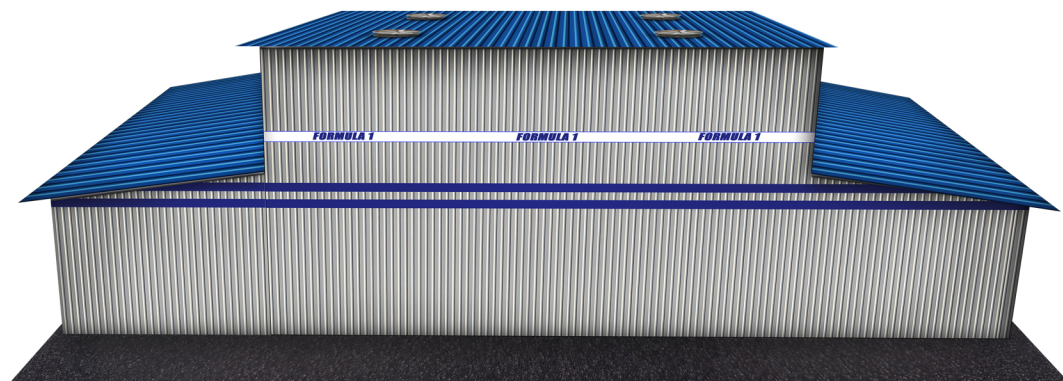
Front of Building



Left Side of Building



Right Side of Building



Rear of Building