



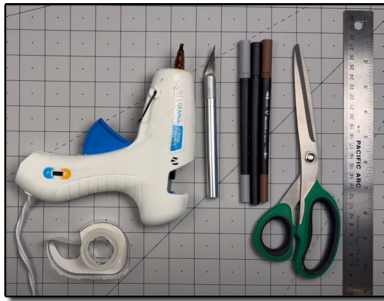
ASSEMBLY INSTRUCTIONS

Photo Real Scale Building Kit by **INNOVATIVE** HOBBY SUPPLY

**Arlo
Raceway
Tower**

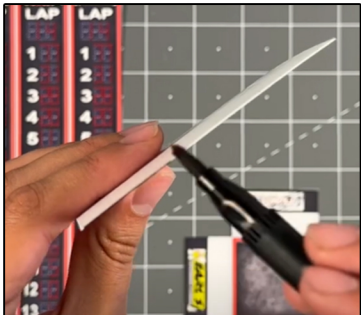
READ ALL STEP BY STEP INSTRUCTIONS

- A new alternative to plastic form scale building models!
- Photo Real Scale Building kits may be the most realistic kits available!
- Great for use on model dioramas, slot car, and train track layouts!
- Designed using real building elements for the most realistic appearance



STEP 1 - Collect the correct tools.

For best results, we suggest you gather at least the most basic tools you will need to complete assembly. While you may find more tools that will help you achieve outstanding results, we suggest you start with the following: Hot glue gun, scissors, variety of water based colored markers, tweezers, straight edge rulers, hobby knife, instant setting high strength hobby glue Plus 4ea, Hot Glue Sticks



STEP 3 - With appropriate color markers, detail the edges of all the parts you cut out. This will result in a finely finished project once assembled.

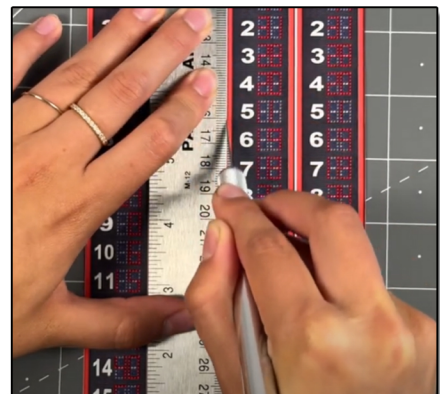


Cut out all components and place in a safe area and place all parts in a tray so you do not lose any.



STEP 2 - Empty contents of the kit, carefully cut out all the individual parts to be assembled with a Scissors. The most precise cuts you can make will result in a dramatically better looking finished project. Use smooth long scissor strokes on the bigger parts.

STEP 4 - **Scoring.** Using a Hobby Knife (see picture) and a straight-edge ruler, apply lighter Blade pressure onto the marked fold line on the part you wish to fold. Scoring along these lines to be bent makes bending all printed parts easier, and results in a much cleaner looking fold. Bend parts using the length of your straightedge ruler or a desk edge
Scoring is an essential skill. Practice on Scrap piece.



Footprint Dimensions

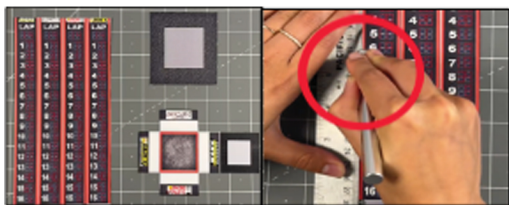
Model Base
8" x 11"

Arlo Raceway Tower
Foundation 5" x 9"

All scale building kits offer many optional features, for a variety of creative ways to complete each project!

Free replacement parts are available call: 866-712-4059

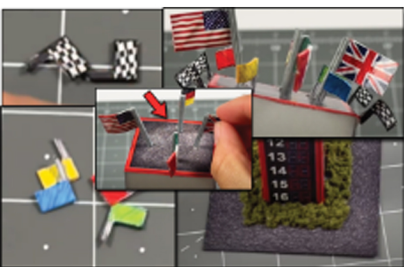
TIP: Look Ahead At All Photos For Extra Guidance



STEP 5 - With scale building kits, there is usually no correct place to begin. In this case, we'll start by prepping the lap scoreboard tower. Collect all of its parts. The top, sides, and base. Score the sides white lines with a hobby knife and ruler. Fold into a cuboid. Use the long glue tab on the side to evenly connect all sides with hot glue.



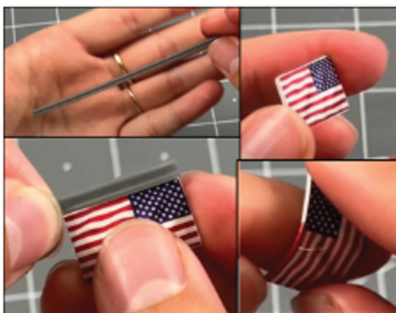
STEP 8 - For the top part, connect all sides together into a cuboid. Use hot glue to secure. The part where it is black, with a light gray square, that is the bottom of it. Line up the light gray square on to the top of the tower we just glued to the base with hot glue. Hold evenly until dried.



STEP 11 - Moving forward, let's assemble the smaller flags. Grab the matching colored flags, glue the backs on to each other with hot glue. After the flags are prepped and ready, place the larger flags anywhere on the top of the lap scoreboard tower. With hot glue. Then place the smaller flags on top of the tower. Once that's done, place landscape moss on the base, around the tower nicely and neatly with hot glue.



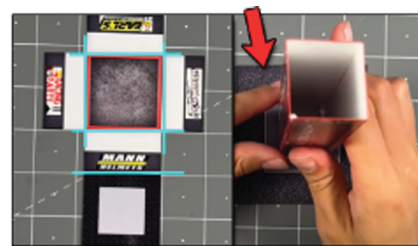
STEP 6 - After folding the sides into a cuboid, fold the small gray tabs on the bottom 90 degrees inwards from the upper sides. Touch up any scored white lines/areas with a red watercolor marker. When coloring the scored seams, use light strokes. You can slowly add layers of color if needed.



STEP 9 - Next grab the flag post included in the kit. Measure the flag post with the length of a larger flag. Cut four pieces of flag post in the same length as the flag. Gather all the larger flags in organized piles. Grab the two matching flags of any kind, flip over one of the flags so the white side is facing you. Place the other matching flag on top in the correct direction. Place hot glue in between the flags and place them on top of each others backs evenly. Touch up the flags sides with a corresponding watercolor marker. Then round the flags with a finger or pen, to add a small realistic touch. Repeat this step to all the larger flags.



STEP 12 - Afterwards, grab the main tower, score the white lines including glue tabs on top. Look above to see where to score for the sides. Before scoring, make sure it is the white line your suppose to score. Fold into a large cuboid. Use the side glue tab to connect all the sides together. Fold the top tab downwards on top of the tower. Secure with hot glue.



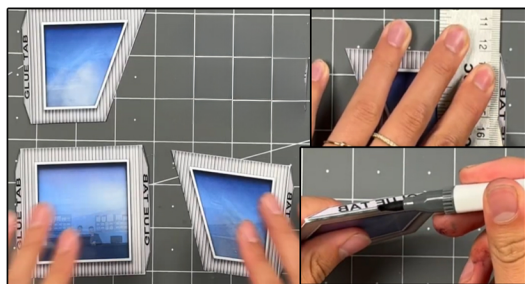
Step 7 - Grab the top part of the lap scoreboard tower. Score the white lines, look at the left image with the blue lines above to see where to score with a hobby knife and ruler. Then with the tower we scored and folded, secure the tower on to it's made base. Place evenly on top of the gray square with hot glue. Hold upwards until dried.



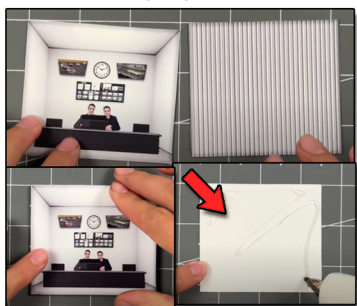
Step 10 - Once the flags and flag post are prepped, grab a flag post, place a small amount of hot glue in the top part crevice of the flag post, and place a flag in between in the correct direction. Repeat this step for the three other large flags.



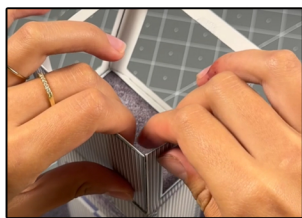
STEP 13 - Next, grab the Optional 2D add on Arlo sign. Place a small amount of hot glue on to the original sign, place the sign on top evenly. This adds a small but very realistic detail. I highly recommend using it. Go to the next page for further instructions.



STEP 14- Next grab all the main tower walls, score all the glue tabs with a hobby knife and a ruler. Touch up any scored seams with a gray watercolor marker.



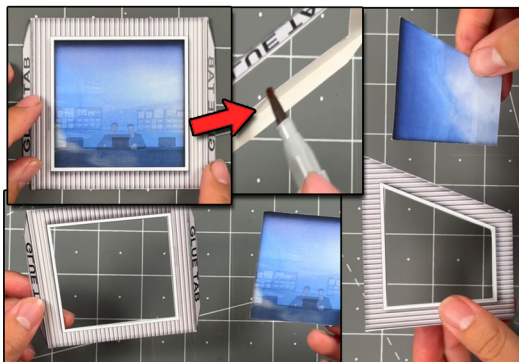
STEP 17- Put the roof aside, then grab the back wall and back wall illusion room. Flip over the illusion room and place hot glue. Place the back wall on top evenly. Touch up the sides with a watercolor marker. Put aside for later.



STEP 20- After gluing the side walls on to the front wall and bottom of the tower, glue the back wall on to the side wall glue tabs. Glue one side at a time!!



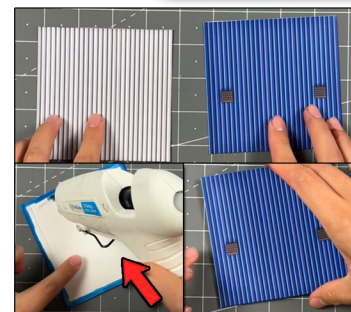
STEP 21 - Grab the roof we assembled earlier on top of the building, let the roof hang over more at the front of the tower. When you placed it evenly on top, secure it with hot glue, by carefully lifting a side at a time. Once secure, grab the Arlo sign, the front and back sides. Flip over one of the roofs making sure the direction of it is correct, place glue on top, then place the other sign on top evenly. Place anywhere on the roof, I recommend right in front of the roof vents. Use the smallest amount of hot glue to secure to the roof. Hold upwards until dried.



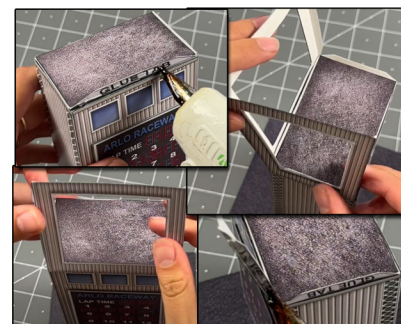
STEP 15- This step is optional. If you want to use the window plastic. Continue reading. Use a hobby knife and ruler to cut out ONLY the inside part of the front and side windows. ALWAYS AVOID cutting the window frames. After the inside part of the window is separate from the wall, you can dispose the inside part. Carefully touch up the inside cut seams of the windows with a watercolor marker. Flip over the walls so the white side is facing you. Cut the window plastic that is included in the kit. Cut to the size of your windows, but leaving a little extra space around to give you space to glue against the back of the walls. Unwrap both sides of plastic so it is see through. Place on top of the open window sections. Use hot glue to secure or scotch tape.



STEP 18- Grab the base for the main tower, and secure the main tower sides that we assembled earlier on to the base evenly. Follow the white lines to secure.. Hold until dry. Touch up the sides of the base with a black or dark gray watercolor marker.



STEP 16 - Then, grab the bottom of the roof and top, for both of the white sides(the backs of them) I recommend coloring the inside edges with a blue watercolor marker that matches the roof vent carefully. So when they are connected they blend seamlessly together. Flip over the bottom of the roof place glue on to the white side, place the top roof on top evenly. Line up nicely together.



STEP 19 - The kit was updated, so the glue tabs are actually on your main tower walls. Use those glue tabs to secure the walls on to the bottom of the tower. Use hot glue. Line up evenly together. Always secure one glue tab on a time to avoid any unevenness. Secure the side walls too.



STEP 22 - And we are done! I love this kit so much. The details are perfectly created. Perfect for any 1/64 slot car race track. This kit is easy but yet still challenging for any type of hobbyist. I hope you enjoyed assembling it as much as I did. Go to the last page for results!



ASSEMBLY INSTRUCTIONS

Photo Real Scale Building Kit by

INNOVATIVE
HOBBY SUPPLY

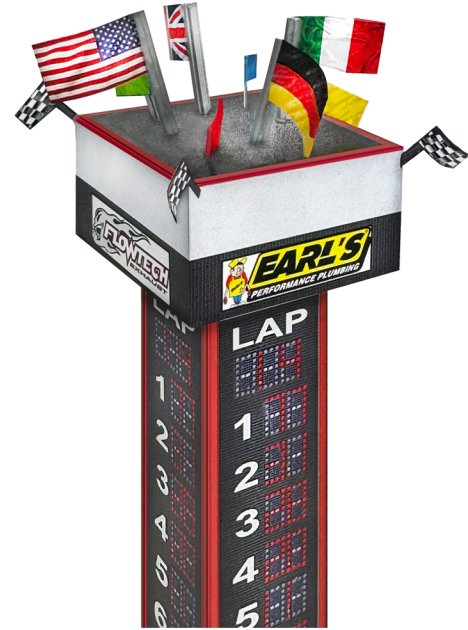
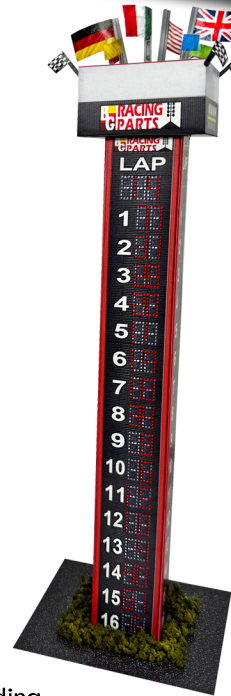
**Arlo
Raceway
Tower**



Up close Side of Building



Front of Building



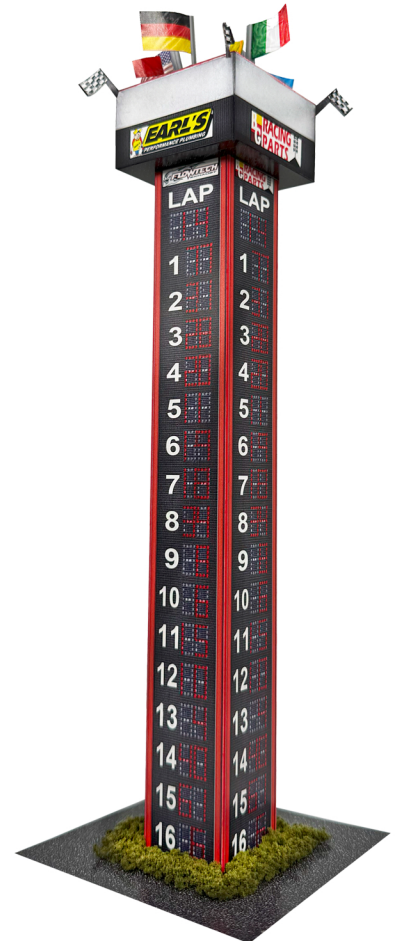
Up close Side of Building



Top of Building



Back of Building



Downward Up Angle of Building