



ASSEMBLY INSTRUCTIONS

Photo Real Scale Building Kit by



Raceway Suites

READ ALL STEP BY STEP INSTRUCTIONS

- A new alternative to plastic form scale building models!
- Photo Real Scale Building kits may be the most realistic kits available!
- Great for use on model dioramas, slot car, and train track layouts!
- Designed using real building elements for the most realistic appearance



Footprint Dimensions

Model Base
8" x 11"

Racer's Lounge
Foundation 5" x 9"

All scale building kits offer many optional features, for a variety of creative ways to complete each project!

Cut out all components and place in a safe area and place all parts in a tray so you do not lose any.

Free replacement parts are available call: 866-712-4059



STEP 1 - Collect the correct tools.

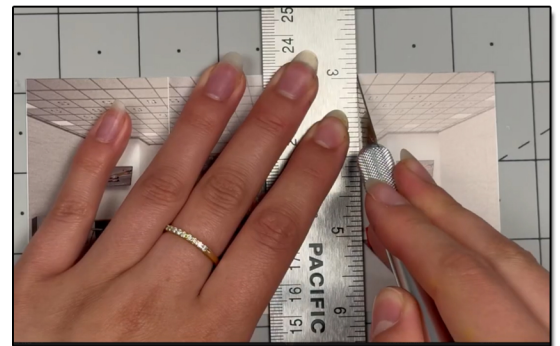
For best results, we suggest you gather at least the most basic tools you will need to complete assembly. While you may find more tools that will help you achieve outstanding results, we suggest you start with the following: Hot glue gun, scissors, variety of water based colored markers, tweezers, straight edge rulers, hobby knife, instant setting high strength hobby glue Plus 4ea, Hot Glue Sticks



STEP 3 - With appropriate color markers, detail the edges of all the parts you cut out. This will result in a finely finished project once assembled.

STEP 2 - Empty contents of the kit, carefully cut out all the individual parts to be assembled with a Scissors. The most precise cuts you can make will result in a dramatically better looking finished project. Use smooth long scissor strokes on the bigger parts.

STEP 4 - **Scoring.** Using a Hobby Knife (see picture) and a straight-edge ruler, apply lighter Blade pressure onto the marked fold line on the part you wish to fold. Scoring along these lines to be bent makes bending all printed parts easier, and results in a much cleaner looking fold. Bend parts using the length of your straightedge ruler or a desk edge
Scoring is an essential skill. Practice on Scrap piece.





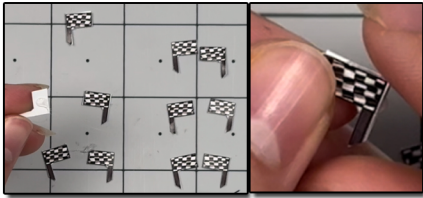
ASSEMBLY INSTRUCTIONS

Photo Real Scale Building Kit by



Raceway Suites

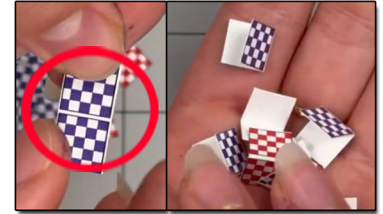
TIP: Look Ahead At All Photos For Extra Guidance



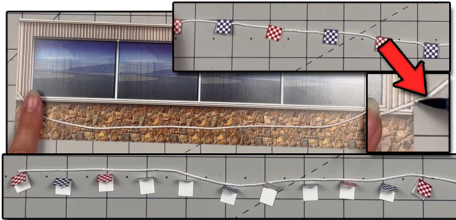
STEP 5 - With scale building kits, there is usually no correct place to begin. In this case, we'll start by prepping the optional race flags. Before assembling them, put them in pairs first. Make sure they fit the backs together. Once you do that, grab one and flip it over so the white side is facing you. Place a small amount of white or hot glue on top, then place another flag over it evenly. adjust if needed. You can curve the flag inwards slightly too, to create a more realistic touch. Lastly touch up the white outer edges with a dark watercolor marker. Repeat for all flags.



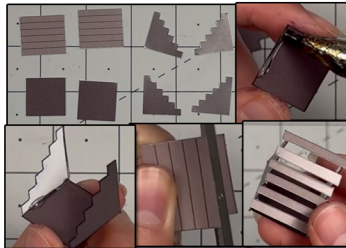
STEP 6 - Grab the roof supporters, make sure there in pairs before gluing together. Grab one from the pair, white side facing towards you. Place small amount of hot or white glue on top, then line up the other roof supporter evenly on top. Touch up the white outer edges with a blue watercolor marker. Repeat this step for all five supporters, put aside for later.



Step 7 - Next collect all the race banners, score all of the white middle lines with a hobby knife and ruler. Fold the two tabs downwards together. Touch up the top scored seam with a corresponding watercolor marker. Repeat this step for all race flag banners.



STEP 8 - Then grab the front wall, and the white string included in the kit. Measure the string across the front of the wall, letting some hang in the middle. Once you pick your desired length, get a marker to mark the exact length you want. Before cutting the string, line up the race flags in your preferred placement/spacing. Then place a tiny amount of hot glue between a flag, place the string at the inside top of the flag, where the scored seam is, and press the tabs down together to close with the string inside. Repeat this step for all race flags. Then once the last race flag meets the mark on the string cut the leftover string off with scissors. Put aside for later.



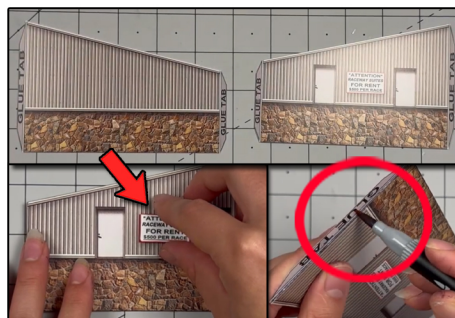
STEP 9 - On to the next step, grab all of the stair parts, touch up all of the white outer edges with a gray marker. Grab one of the bases, place hot glue along the side, and place a stair side against the side of the base, hold upwards until dry, glue other side. Then grab the part with black line across it, cut across each black line to create small individual stairs. Place each stair on a step using small amounts of hot glue. Repeat this step for both sets of stairs.



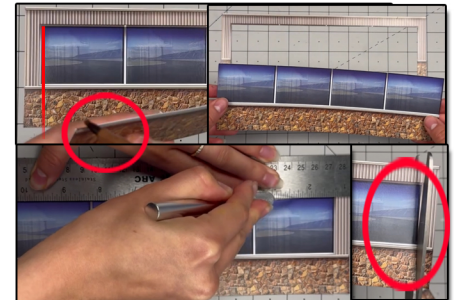
Step 10 - Now grab the front sign, both sides. And flip one over, still making sure the words are in the right position. When the white side is facing towards you, place some hot glue on top. Then place the other sign carefully and evenly on top. Touch up the outer edges with a marker. Put aside for later.



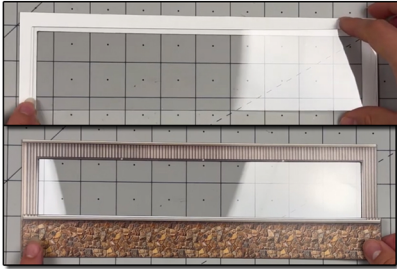
STEP 11 - Grab the back wall, place hot glue on top of the concession sign. Grab the concession 2D sign, touch up white edges with a marker, then place glue behind the sign and place on top of the original sign. Put aside for later.



STEP 12 - After, grab the side walls, touch up the outer white edges with a brown or gray marker. Score the glue tabs, and fold inwards. Touch up the scored seams. And for the left side wall, glue on the 2D add on sign to the original side with hot glue. Put aside for later.



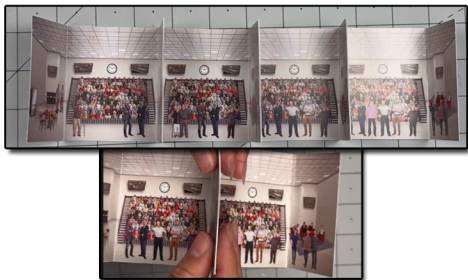
STEP 13 - Next, grab the front wall and the bottom add on wall. Touch up everything with a marker. Then with scissors, line up the bottom of the wall to the inside part of the window. Avoid cutting any window frames at all times. Cut upwards, until when you about to hit the top of the window frame. Create another slit on the other side. After that, use a ruler and a hobby knife to cut the top inside part of the window. When done, the inside and part of the bottom of the front wall should come off easily like shown in the right top corner photo. Keep the frame of the front wall for the next step.



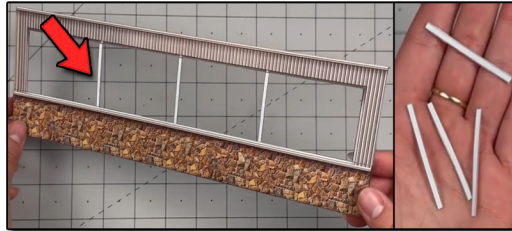
STEP 12 - Once the inside part of the window is taken out, flip over the rest of the front wall so the white side is facing you. Grab the window plastic. Take off both sides of wrapper until see through. Place on top, lining up the glass with the bottom of the wall. Making sure theres no open sections. Secure with small pieces of scotch tape. Make sure you can not see the tape on the front side. Flip over to the front, and place the bottom add on wall, lining up the bottoms together. Glue on side at a time to avoid any unevenness.



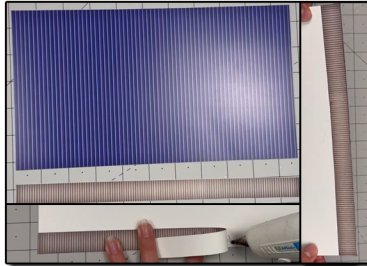
STEP 15- Now gather all of the smaller fences, put them into pairs. Then once in pairs, place glue behind one, and place the matching one on to the other side in the correct direction. For the ones with lines, make sure to avoid placing glue where the white lines are. After secured, for the ones with lines, score the white lines with a hobby knife and ruler. Fold the smaller tab inwards very gently. Put aside for later.



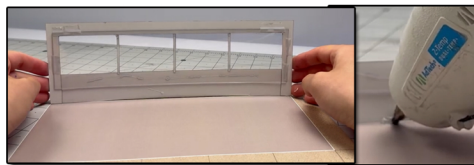
STEP 18- Next, glue two illusion rooms together, lining up the sides. Use a white glue stick or hot glue. Glue the other two together. Then grab the two pairs and glue the sides together, so the four is all connected evenly, like shown in the photo above. Put aside for later.



STEP 13- Then grab the window dividers. There are three bolts on the top of the window frame on the front wall, use the bolts as guide lines on where to secure the dividers evenly. Place them on top of the glass. Tuck in the bottom of the dividers underneath the bottom add on wall. Then place a small amount of hot glue on the top of plastic where the divider is, to secure it evenly on to the glass. Repeat for all dividers.



STEP 16 - Afterwards, grab the roof and the underneath part. Touch up the white outer edges with both parts. Flip over the roof, so the white side is facing you. Place the underneath part on one of the ends of the roof where the length matches. Line the ends evenly. Then glue on to the backside of roof with hot glue or a white glue stick. Put aside for later.



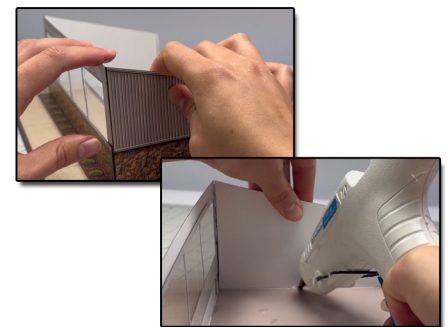
STEP 19- After, grab base, touch up the outer edges. The front of the base is where the plants are. Grab the front wall. Place at the front of the base, lining up with the white line. Place small globs of hot glue behind the wall. ONLY place the glue in the middle of the windows. This will help avoid any interference with the illusion rooms later on. Hold upwards until dried completely.



STEP 14- For this step, gather the back and front fence. (the longer pieces) Flip over one so the white side is facing you. Place hot or white glue stick on to the white side, and place the other fence on top evenly. Put aside for later.



STEP 17- Then grab all of the illusion rooms, score all of the white lines with a hobby knife and ruler. Score a little lighter than you usually would. Then fold the two sides 90 degrees inwards gently. Touch up the scored seams and the outer edges. Repeat this step for all rooms. Go to next step.



STEP 20- Now grab both side walls, glue the correct side wall to the correct side of the front wall. Use the glue tab to secure the walls together. Line up evenly. After, line up wall with the white line on base. Place glue behind it, hold until dry. Repeat for both side walls.

GO TO THE NEXT STEP



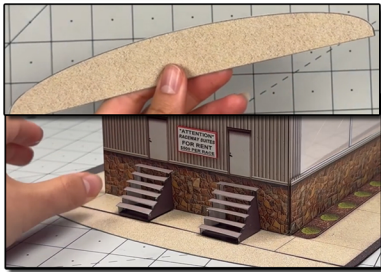
ASSEMBLY INSTRUCTIONS

Photo Real Scale Building Kit by



Raceway Suites

TIP: Look Ahead At All Photos For Extra Guidance



STEP 21 - Then grab the side walk add on, place glue along the flat end, and place the main base on top of it (LEFT SIDE). While lining up both sidewalks. After place the stair sets underneath the two doors, use hot glue to secure.



STEP 24- Then grab the race flag banner, and glue it to the bottom of the front wall windows like shown in the picture. Place glue on the end race flags and secure it to the wall. Add some landscape moss to the bushes on the front of the base.



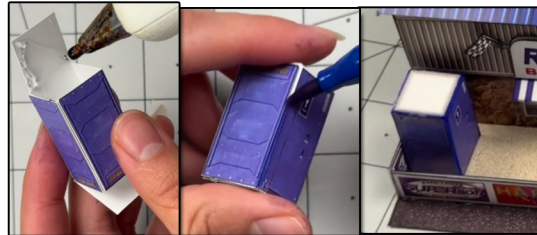
STEP 27- Secure the raceway suites sign on top of the roof anywhere you would like. I put mine towards the front of the building, but its up to you!



STEP 22 - Grab the illusion rooms, glue one side at a time, working your way to the last side of the illusion room. Glue the sides against the window plastic. Line the sides directly behind the window dividers! To hide the sides nicely. You only need the smallest amount of glue to secure.

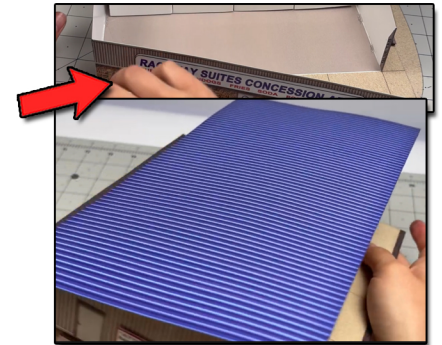


STEP 25 - Next grab the roof supporters. Before gluing on to the kit, make sure the flat side is against the front wall, and the angled part matches the bottom part of the roof. After your confident its in the right direction, place glue along the parts it will touch the kit on, and place evenly. Hold until dry. Repeat this step for all roof supporters

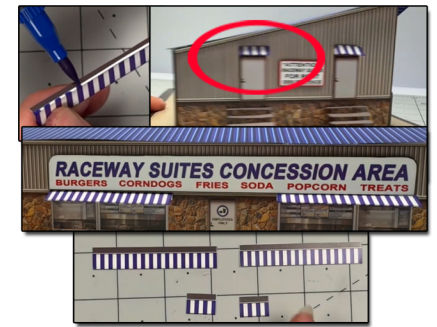


STEP 28- Last thing to assemble, is the Porty potty, score all the white lines, and fold into a cuboid. Touch up the scored seams with a blue purple watercolor marker. Use the gray tab to secure the sides together. Use hot glue. Then place anywhere on the base. I placed it in the back of the kit.

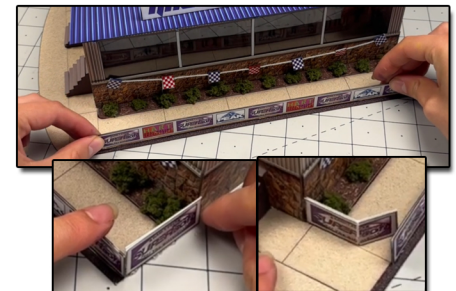
STEP 30 - Next, glue the flags anywhere you would like on the kit, I glued mine by the concession sign. Get creative with it and have fun detailing. And we are done! Go to the next page to see the results.



STEP 23 - Grab the back wall, use the side wall glue tabs to secure the back wall on to the rest of the building. Then place the roof on top, The underneath part on the bottom of the roof, make sure its facing/lined up with he front side of the building. Glue in place.



STEP 26 - Grab the awnings, score all the white lines, fold the gray tab downwards with a flat surface. Touch up the scored seam with a blue marker. Place the smaller ones above the door, bigger ones above the concession windows. Use the small tab to secure against wall.



STEP 29- After, glue the back and front fence along the outer edges of the side walk, like shown in the photo above. Glue the small fence on the right sides. And the gates on the left side.



ASSEMBLY INSTRUCTIONS

Photo Real Scale Building Kit by



Raceway Suites



Front of Building



Left Side of Building



Right Side of Building



Rear of Building