



ASSEMBLY INSTRUCTIONS

Photo Real Scale Building Kit by **INNOVATIVE**
HOBBY SUPPLY

Racer's Lounge

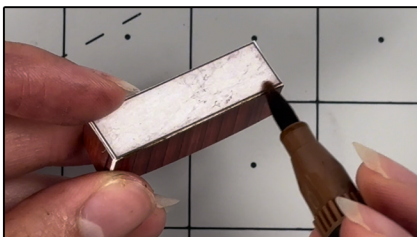
READ ALL STEP BY STEP INSTRUCTIONS

- A new alternative to plastic form scale building models!
- Photo Real Scale Building kits may be the most realistic kits available!
- Great for use on model dioramas, slot car, and train track layouts!
- Designed using real building elements for the most realistic appearance



STEP 1 - Collect the correct tools.

For best results, we suggest you gather at least the most basic tools you will need to complete assembly. While you may find more tools that will help you achieve outstanding results, we suggest you start with the following: Hot glue gun, scissors, variety of water based colored markers, tweezers, straight edge rulers, hobby knife, instant setting high strength hobby glue Plus 4ea, Hot Glue Sticks



STEP 3 - With appropriate color markers, detail the edges of all the parts you cut out. This will result in a finely finished project once assembled.



Footprint Dimensions

Model Base
8" x 11"

Racer's Lounge
Foundation 5" x 9"

All scale building kits offer many optional features, for a variety of creative ways to complete each project!

Free replacement parts are available
call: 866-712-4059



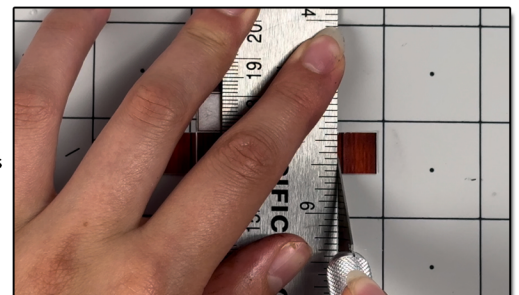
THE BACK SIDE!

Cut out all components and place in a safe area and place all parts in a tray so you do not lose any.

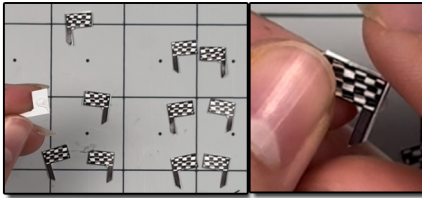


STEP 2 - Empty contents of the kit, carefully cut out all the individual parts to be assembled with a Scissors. The most precise cuts you can make will result in a dramatically better looking finished project. Use smooth long scissor strokes on the bigger parts.

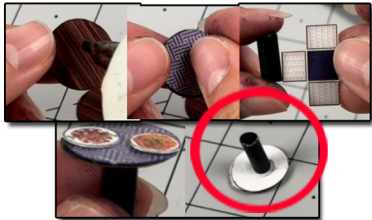
STEP 4 - **Scoring.** Using a Hobby Knife (see picture) and a straight-edge ruler, apply lighter Blade pressure onto the marked fold line on the part you wish to fold. Scoring along these lines to be bent makes bending all printed parts easier, and results in a much cleaner looking fold. Bend parts using the length of your straightedge ruler or a desk edge
Scoring is an essential skill. Practice on Scrap piece.



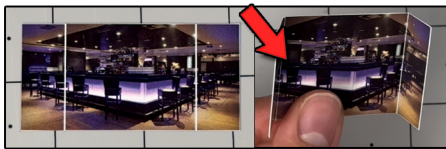
TIP: Look Ahead At All Photos For Extra Guidance



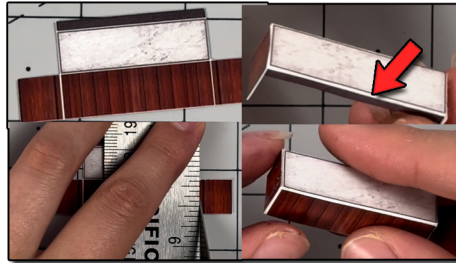
STEP 5 - With scale building kits, there is usually no correct place to begin. In this case, we'll start by prepping the optional race flags. Before assembling them, put them in pairs first. Make sure they fit the backs together. Once you do that, grab one and flip it over so the white side is facing you. Place a small amount of white or hot glue on top, then place another flag over it evenly. adjust if needed. You can curve the flag inwards slightly too, to create a more realistic touch. Lastly touch up the white outer edges with a dark watercolor marker. Repeat for all flags.



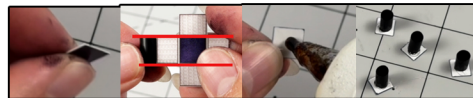
STEP 8 - Then grab the table tops and optional table cloths. Place a small amount of hot glue on top of a table top, place a cloth on top evenly. After grab the black straw. I used the chair bottoms to show you how small you need to cut the straw pieces. Cut however many small black straw pieces you need for the tables you are using. Place glue on to the top of a straw piece, place the table top on top. hold straw inwards until dry. Repeat for all tables. Then place meals on top, in however order you like.



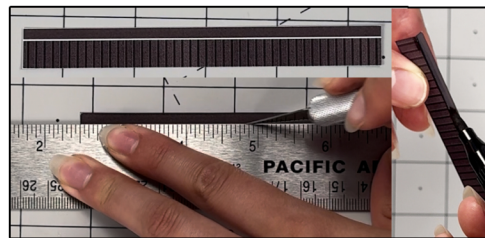
STEP 11 - Grab the illusion room, score the two white lines with a hobby knife and ruler. Score a little lighter than you usually do. Fold the two tabs carefully inwards. Touch up the white lines with a gray watercolor marker. Put aside for later.



STEP 6 - Grab the bar tables, score the white lines with a hobby knife and ruler. Fold into a cuboid. Fold the gray tab downwards like shown in the right top image above. Use hot glue to secure the sides together. Then touch up with a marker. Put aside for later.

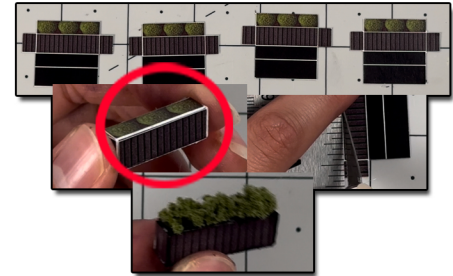


STEP 9 - On to the next step, grab the bar stool tops, touch up the outer edges with a corresponding watercolor marker, then grab the rest of the black straw you did not use. And cut four pieces of straw as the reference photo above. I used the patio chair again to show you how small to cut the pieces. Glue the straw piece on to the bottom of the bar stool tops. Hold until dry.

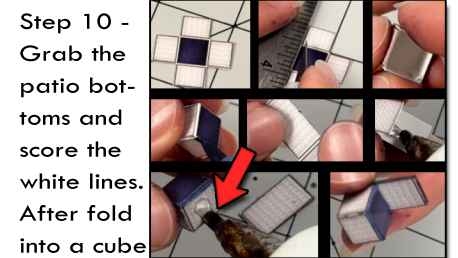


STEP 12 - Then grab the front wall awning, score the white line. Fold the small top tab downwards. Use a flat surface to get a clean, even fold. Then touch up the scored seam with a dark watercolor marker. Put aside for later.

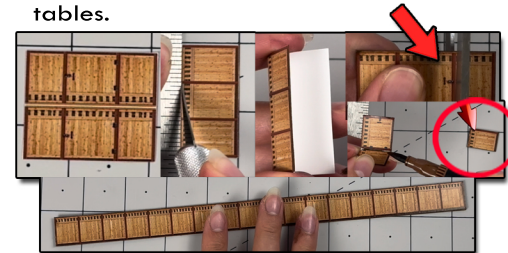
STEP 13 CONTINUED- For the gate, after gluing the sides together, cut where the door opens, keep the small piece of gate you cut off for later. Touch up the white edges with a brown marker. Then score where the hinges are with a hobby knife and ruler. Push the gate slightly inwards. Touch up the scored seam, and put aside for later.



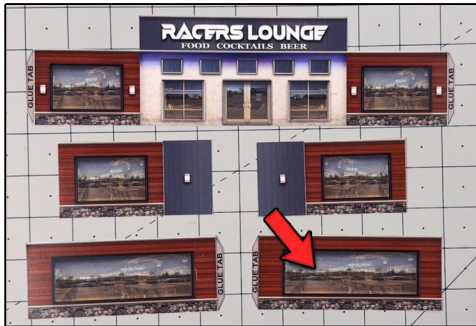
Step 7 - Grab the hangover plants, score the white lines. Fold into a cuboid. Use hot glue to secure sides together. Use a black watercolor marker to clean up any white lines. Then place small amounts of landscape moss on top of the bush art. Repeat for all four plants. Put aside for later.



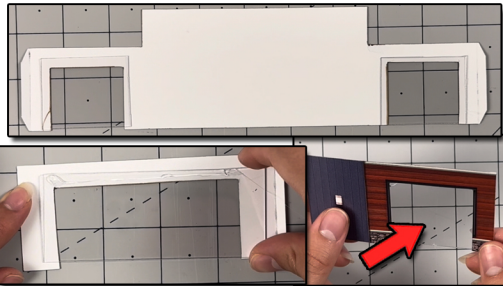
Step 10 - Grab the patio bottoms and score the white lines. After fold into a cube Place hot glue in the corners, and hold as a cube until dry. Touch up with a marker. Then grab the chair backs, score the white middle line, fold the top tab downwards on to the other one. Place glue in between, press together. Place a small amount of glue on one side of the patio chair bottom. Place the chair back against it to create a full chair. Repeat for all chairs. Decide how many chairs you want for the tables.



STEP 13 - Next, grab all the fence pieces, score the white middle lines. Fold the tabs towards the backs of each other. Touch up any white areas and the scored seams with a brown marker. Place hot glue in between, then press down on one end, and slide your thumb to the other side. Do this to all the fence. For the gate, avoid placing glue where the hinges are and where the door opens.



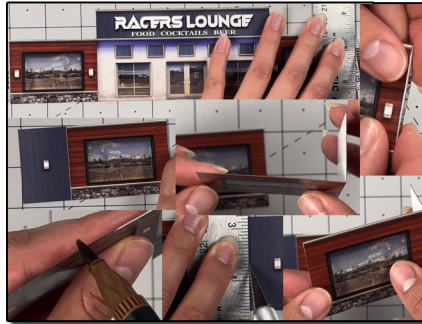
STEP 12 - Now let's prep the walls. We want to touch up every wall's outer edges with a brown watercolor marker. After your done with that, grab the front wall and the right/left side walls, score the glue tabs, fold them 90 degrees inwards. After scoring, touch up the scored seams with the brown marker.



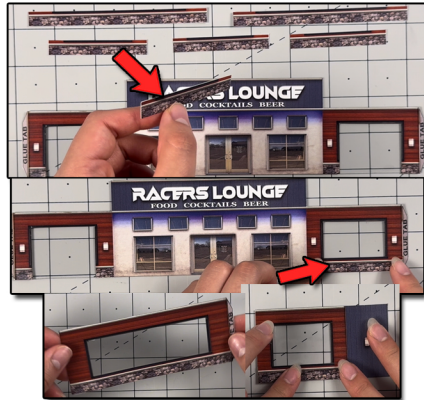
STEP 15- Now touch up the inside part of the windows edges with a brown marker. After flip over a wall, grab the window plastic. And take off both sides of wrapper until it's see through. Grab the matching size of plastic, and place it on top evenly over the open window section on the back of the wall. Try to line up the glass with the bottom of the walls. IF its not perfect its OK. But try to. Make sure theres no opening section. To secure the glass. either use scotch tape or hot glue. Make sure you can not see the tape or glue on the front side. Repeat this to all the walls/windows.



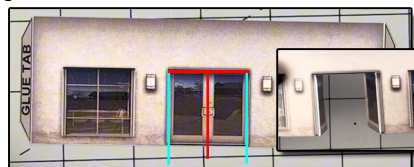
STEP 18- Next, grab the Front bump out wall, score the two side white lines, and the two glue tabs with a hobby knife and ruler. Fold the two side walls 90 degrees inwards from the front side, then fold the glue tabs inwards from the side walls. Touch up the scored seams and outer edges with a watercolor gray marker.



STEP 13- Then grab the right/left back side walls and score the white line with a hobby knife and ruler, fold the sides 90 degrees from each other. Touch up with a brown marker.



STEP 16 - Afterwards, grab all of the bottom add on walls. Touch up the edges with a brown marker. Match the correct ones to the correct length windows. Once you do that, line them up with the bottom of the wall towards the bottom of the windows. Line it up with the rest of the window frame too. Glue one side at a time to avoid any unevenness. Do this to all the windows/walls. For the longer windows (left and right walls) I recommend placing glue in the middle too.



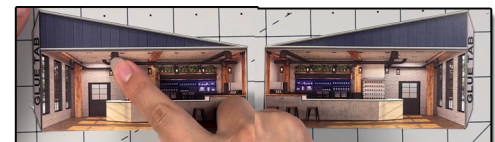
STEP 19- After, grab the back wall. Score the two glue tabs. Fold them inwards. Then let's open the back door. Cut the middle part of the door where it opens with scissors. Stop cutting at the top of the door. Score the right and left hinge sides with a hobby knife and ruler. After that, use a hobby knife and ruler to cut the top of the door. Push open the doors slightly inwards. Put aside for later.



STEP 14- For this step, we want to cut all the inside part of the windows out. To do this look at the left top corner photo to see where to cut. Use a pair of scissors, start from the bottom of the wall to the inside part of the window. Avoid cutting the window frames at all times! Create two slits on both sides of the window, stop cutting when your about to hit the top part of the window frame. After use a hobby knife and ruler to cut the top inside part of the window. The inside part of the window should come off nicely, if it doesn't see where you need to cut. Do not pull it off. Repeat this step for all the windows (walls).



STEP 17- Then glue the front wall to the front of the base. Make sure to line up the wall with the white line. The line BEHIND the plants. Place very small amounts of hot glue behind the wall. BUT AVOID placing any hot glue where the red circled areas are, because it would later interfere with the inside walls. Hold upwards until dry.

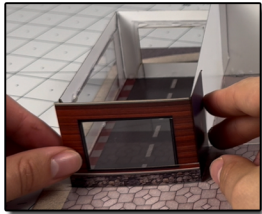


STEP 20- Now grab the inside left and right walls, score the glue tabs with a hobby knife and ruler. Fold the glue tabs 90 degrees inwards. Then go to the next page for further instructions.

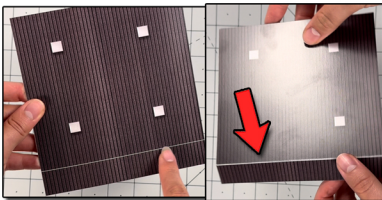
TIP: Look Ahead At All Photos For Extra Guidance



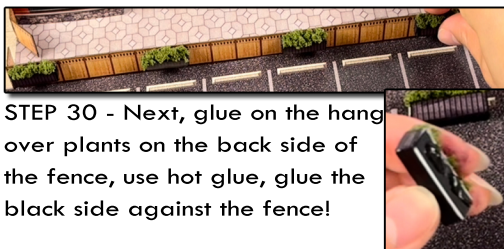
STEP 21 - Then grab the Front bump out wall, Glue on side at a time. Line it up with the front section of the front wall. Then glue the other side once the the side is dried completely.



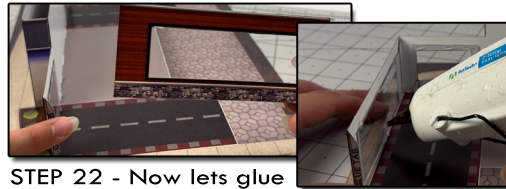
STEP 24- Then grab the left and right side back walls. Use the side wall glue tab to connect the bigger half of the wall on to the rest of the building. Then glue the blue side wall on to the back of the inside wall with hot glue or white glue. Secure the other wall.



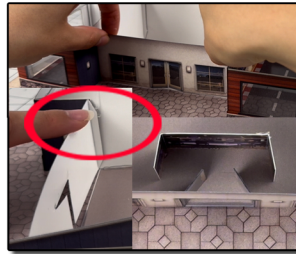
STEP 27- Grab the main roof, and score the white line. Fold the smaller tab slightly downwards at a 45 degree angle. Touch up the white line with a dark marker. Use add on roof vents to place them on top of the roof original art for a 2D effect.



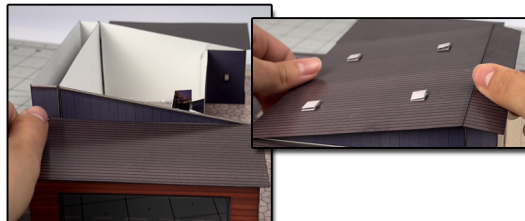
STEP 30 - Next, glue on the hang over plants on the back side of the fence, use hot glue, glue the black side against the fence!



STEP 22 - Now lets glue the right side wall. Make sure the glue tab is facing the back side of the kit. Use the glue tab on the front wall to secure the right side wall on. Line up evenly. The place glue behind the wall, while lining up with the white line. Glue the other side wall after.



STEP 25 - Next grab the back wall, put it in between the walls. Line up evenly. From behind, place glue on the backs of the glue tabs to secure when its already in place. After grab the illusion room and place it behind the open door. Secure with hot glue.



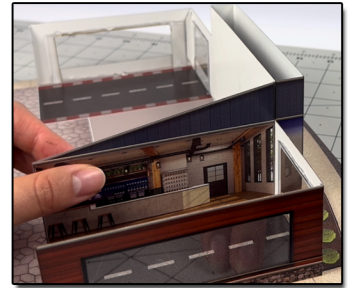
STEP 28- Place the smaller roofs on the sides first, secure them only at the side thats touching the inside wall so you can open and close the roofs later on. Or simply leave them on top. Then place the main roof on. Use hot glue to secure.



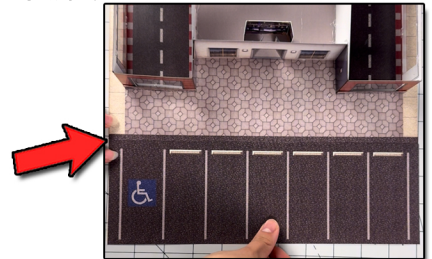
STEP 29- After, glue the back fence on, line up with the parking lot and the patio ground. Use hot glue. Then secure the left side. And the gate part. Do not forget to glue on that small piece of fence we cut off from the gate earlier.



STEP 31 - Glue the bar tables inside of the patio, right next to the back wall's windows. Place the bar stools next to the bar tables. And after, place the tables and chairs anywhere you would like on the patio! Then lastly add the front awning to the front wall, look at the last photo to see exactly where. Use the small tab as a glue tab. Adjust the awning after. Then add some moss to the front of the base.



STEP 23 - Grab the inside walls, place it directly behind the front section of the front wall. Use white glue or hot glue to connect. Line up evenly. Glue both sides, then line up straight on the base, and place a small amount of hot glue behind the wall.



STEP 26 - Grab the parking lot add on, and line it up on to the back of the main base. Line up with the tar texture already on the main base. Use hot glue to secure on.





ASSEMBLY INSTRUCTIONS

Photo Real Scale Building Kit by

INNOVATIVE
HOBBY SUPPLY

Racers Lounge
Lounge



Front of Building



Left Side of Building



Right Side of Building



Rear of Building