



ASSEMBLY INSTRUCTIONS

Photo Real Scale Building Kit by **INNOVATIVE** HOBBY SUPPLY

**Sammy's
Restaurant**

READ ALL STEP BY STEP INSTRUCTIONS

- A new alternative to plastic form scale building models!
- Photo Real Scale Building kits may be the most realistic kits available!
- Great for use on model dioramas, slot car, and train track layouts!
- Designed using real building elements for the most realistic appearance



Footprint Dimensions

Model Base
8" x 11"

Sammy's Restaurant
Foundation 5" x 9"

All scale building kits offer many optional features, for a variety of creative ways to complete each project!

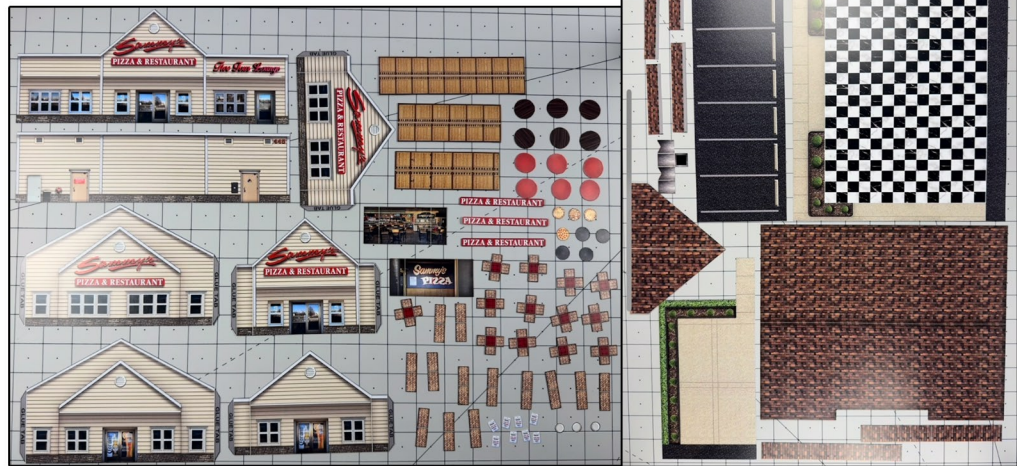
Free replacement parts are available call: 866-712-4059



STEP 1 - Collect the correct tools.

For best results, we suggest you gather at least the most basic tools you will need to complete assembly. While you may find more tools that will help you achieve outstanding results, we suggest you start with the following: Hot glue gun, scissors, variety of water based colored markers, tweezers, straight edge rulers, hobby knife, instant setting high strength hobby glue Plus 4ea, Hot Glue Sticks

Cut out all components and place in a safe area and place all parts in a tray so you do not lose any.

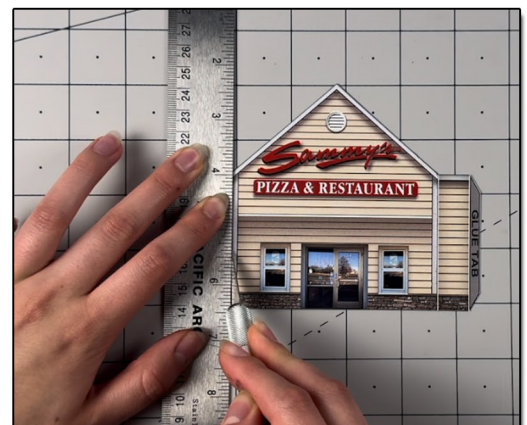


STEP 2 - Empty contents of the kit, carefully cut out all the individual parts to be assembled with a Scissors. The most precise cuts you can make will result in a dramatically better looking finished project. Use smooth long scissor strokes on the bigger parts.



STEP 3 - With appropriate color markers, detail the edges of all the parts you cut out. This will result in a finely finished project once assembled.

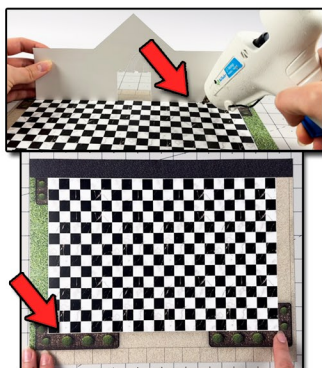
STEP 4 - **Scoring.** Using a Hobby Knife (see picture) and a straight-edge ruler, apply lighter Blade pressure onto the marked fold line on the part you wish to fold. Scoring along these lines to be bent makes bending all printed parts easier, and results in a much cleaner looking fold. Bend parts using the length of your straightedge ruler or a desk edge
Scoring is an essential skill. Practice on Scrap piece.



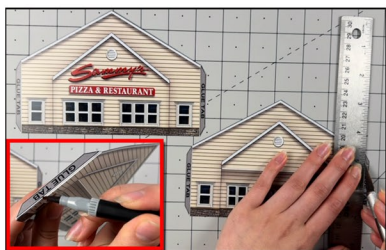
TIP: Look Ahead At All Photos For Extra Guidance



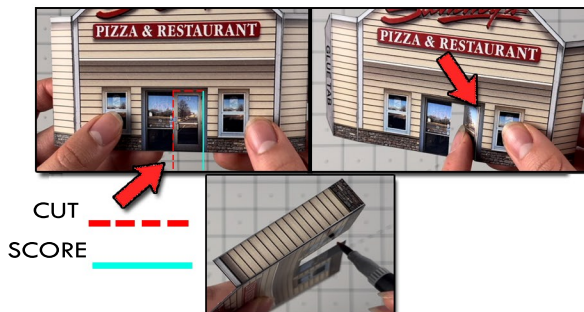
STEP 5 - With scale building kits, there is usually no correct place to begin. In this case we'll start by prepping the front bump out wall. Score the two side white lines and the glue tabs, with a hobby knife and ruler. Fold the side tabs 90 degree inwards from the front wall. Fold the glue tabs inwards also, but 90 degrees inwards from the side walls.



STEP 8 - Now glue the front wall on to the front of the base. Glue the wall along the white line located on the base. Line up evenly. Place small amounts of hot glue behind the wall. Avoid putting glue too close to the outer corners, as it would later interfere with the side walls. Hold up from the base, until dried completely.



STEP 11 - Grab the side walls. Score both of the glue tabs on the left and right wall with a hobby knife and ruler. Then use a gray watercolor marker to touch up the scored seams.



CUT
SCORE

STEP 6 - After, use a gray watercolor marker to touch up the scored seams. Then use scissors to cut the middle of the door. Score with a hobby knife and ruler where the door hinges are. Lastly cut the right side half of the door with a hobby knife. Once you do those 3 specific steps, the door should open. Push slightly inwards to open it. Touch up any white areas with a marker.



**WHERE
TO GLUE
BUMP OUT
WALL**

STEP 9 - Next Glue the Front bump out wall on to the Front wall. Line up the bump out wall with the front walls exact art. Use the glue tabs to help you secure the two together. Glue ONE side at a time to avoid unevenness. Hold until dry, then glue the other side. Line up the bump out sides with the two white middle trims on the front wall!



STEP 12 - After scoring the glue tabs, grab ONLY the right wall. Cut around the door, just like what we did to the Front wall. Use scissors for the side slits, then a hobby knife/ruler for the top. Once the small section is cut out, dispose it. Then glue the right wall with the open section on to the right side of the base. Place glue on to the glue tab closes to the front wall, line up both walls evenly. Then place a small amount of hot glue behind the wall to secure it against the base.



Step 7 - Put the Front bump out wall aside. For the front wall, we need to cut out a small section out, specifically where the door is, but slightly over the top and sides. Use the image above to see where to cut. Doesn't have to be exact just don't cut above the white line and past the windows! Use scissors to cut the side slits, and a hobby knife/ruler for the top. Dispose the small section after.



Step 10 - Then collect the Front entrance illusion room. Score the two white lines lightly with a hobby knife and a ruler. Fold slightly inwards. Touch up the white lines with a gray marker. After, place the illusion room right behind the front walls open section. Use hot glue to secure the room against the back of wall.



STEP 13 - Now for the Right side bump out wall, cut the middle of the door, and the top with a hobby knife/ruler. Score the two sides where the door hinges are. After the door should be able to open like the image above.



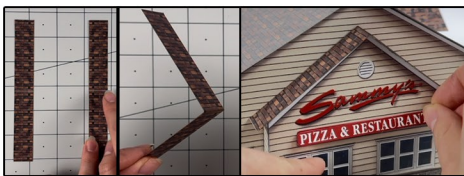
STEP 12 - Once the right side bump out wall is prepped, attach it to the right side wall, lining up the sides with the right side walls art. Glue one side at a time. Once one side is dried glue the other. Line up evenly. Hold until dry.



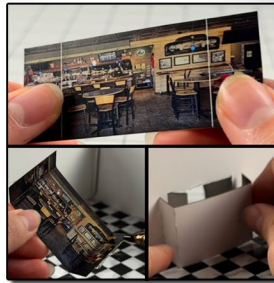
STEP 15- After, secure the Left bump out wall to the left side wall just like the right and front bump out walls. Line up with the original art. Glue one side at a time.



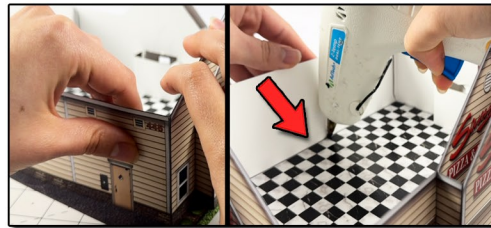
STEP 18- Place the roof on to the building, the notch facing the front wall. Adjust the roof on to the building so the notch locks in place with the front wall. Place a small amount of hot glue on to the top of the back wall to secure the roof.



STEP 21- Then collect the two bump out side wall roofs, score the white line, fold downwards. Touch up with a brown watercolor marker. And place on top of the bump out side walls. Use hot glue to secure.



STEP 13- Grab the Patio entrance illustration room, score the two white lines. Fold the sides slightly inwards. Then place it behind the right side wall's open section. Place evenly. Use hot glue to secure.



STEP 16 - Next, glue the back wall on to the side walls glue tabs. Glue one side at a time. Line up the walls while gluing. Hold until dry, then glue the other side. Place glue behind the wall, and line up with the white line on the base. Hold until dry.



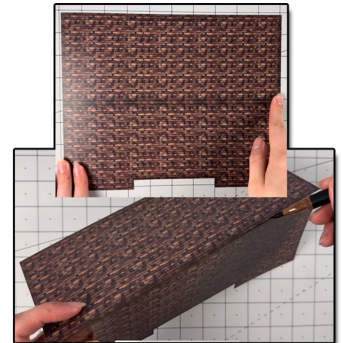
STEP 19- Next, grab the dormer. Score the white middle line. Fold sides downwards. Then touch up with a marker. Place small amounts of hot glue on to the front walls peak, then place the dormer on top. Line up evenly.



STEP 22- Now grab the patio add on for the base. Carefully slide it a tiny bit underneath the right side bump out wall, laying on top of the base. Line it up with the front of the base. Lift one side up at a time carefully to place a small



STEP 14- Then glue the left wall on to the front wall using the nearest glue tab, line up evenly. Place small amounts of hot glue behind the wall to secure to base.



STEP 17- Now collect the roof. Score the middle white line. Use a hobby knife/ruler. Fold the sides downwards on a flat surface. Use a brown marker to touch up the white seam.



STEP 20- After, score the white line between the gray tab and the roof texture on all the awnings. Fold the tab downwards. Attach the correct matching length awnings to the white lines located on both front and right side walls. Use hot glue to attach.

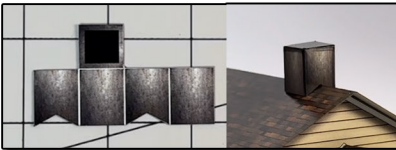
STEP 22- CONTINUED
- amount of hot glue on to the base below it. Press down. Then glue the back side down.



STEP 23 - After applying the patio base add on, now let's apply the parking lot add on. Carefully place the building/base attached already over the parking add on where its closely lined up with the wheel stops. Use hot glue to secure.



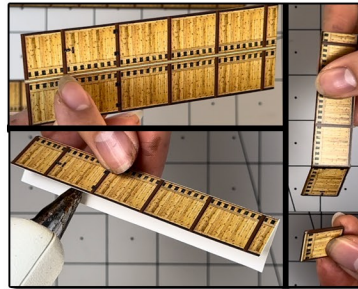
STEP 26 - Then you can glue the red table cloths on top of your finished tables. Collect all the pizzas, pizza pans, and plates. Get creativity have make pizza slices, layer, and glue. See above for examples. Have fun with this step!



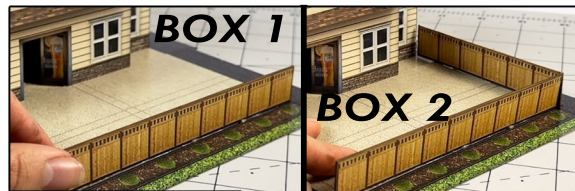
STEP 29- The last thing we need to score is the optional roof vent. Score all the white lines with a hobby knife and ruler. Fold into a cube. Use hot glue to secure all sides together. Place anywhere on top of the buildings roof peak after. Secure with hot glue.



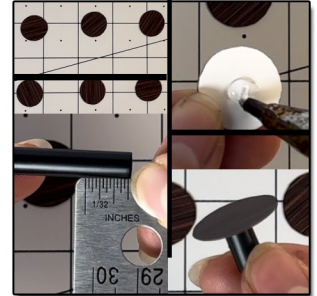
STEP 24- Grab the sign post that's included in the kit, cut it about the 1/64 door height. Grab one of the take out parking only sign and glue it to the top-ish. Then glue another one behind it. Place it anywhere on the parking lot.



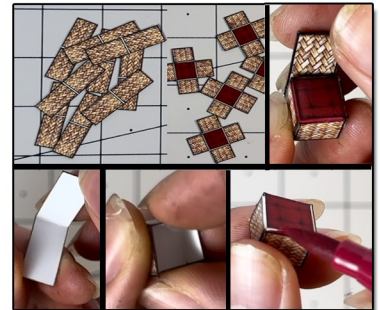
STEP 27 - Next, grab the front fence. Score the white middle line and fold the sides downwards to each other. Place glue between the sides, avoid putting glue where the gate door hinges are and where it opens. Once glued, score where the gate hinges are. Then cut where the gate door opens. Put aside for later. For the other gates, score the white line, fold together and glue.



STEP 30 - Next, grab the side fence glue it along the edge of the concrete shown in box 1. Place a small amount of hot glue along the bottom, then attach. After, attach the back fence to the right side building, base, and to the side fence with hot glue, line up with the edge of the concrete, see box 2. Then glue the front gate to the side fence and base. Glue the small piece of gate we cut earlier on to the side of the right side bump out wall. See box 3.



STEP 25 - Then grab the table tops and the black straw. Cut the black straw into 6 pieces of 3/8 of an inch. Place a small dab of hot glue on to the white side of a table top. Place a cut piece straw on top. Hold straight up until dry. Make however much tables you want.



STEP 28 - After, grab the chair backs and chair bases. Score the white line on the backs, fold side downwards together, place glue in between, press down together evenly. Then for the bases, score the four white line, fold the sides downwards together to make a cube. Place small amounts of hot glue in between the inside corners of the base, hold until dry. Touch up any white areas with a corresponding marker. Place a chair back to one of the sides of the bases to create a complete chair. Use hot glue to secure. Make however much you want.



STEP 31 - Once the patio fence is applied, place the tables and chairs on the patio to your liking. Secure with hot glue.

**GO TO THE LAST
PAGE TO SEE THE
FINAL RESULTS**



ASSEMBLY INSTRUCTIONS

Photo Real Scale Building Kit by

INNOVATIVE
HOBBY SUPPLY

**Sammy's
Restaurant**



Front of Building



Left Side of Building

Right Side of Building



Rear of Building