



# ASSEMBLY INSTRUCTIONS

Photo Real Scale Building Kit by **INNOVATIVE**  
HOBBY SUPPLY

**Large  
Steel  
Building**

## READ ALL STEP BY STEP INSTRUCTIONS

- A new alternative to plastic form scale building models!
- Photo Real Scale Building kits may be the most realistic kits available!
- Great for use on model dioramas, slot car, and train track layouts!
- Designed using real building elements for the most realistic appearance



## Footprint Dimensions

Model Base  
8" x 11"

Large Steel Building  
Foundation 5" x 9"

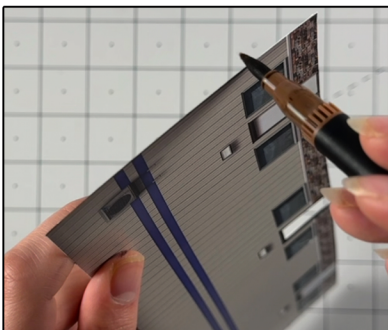
*All scale building kits offer many optional features, for a variety of creative ways to complete each project!*

Free replacement parts are available  
call: 866-712-4059



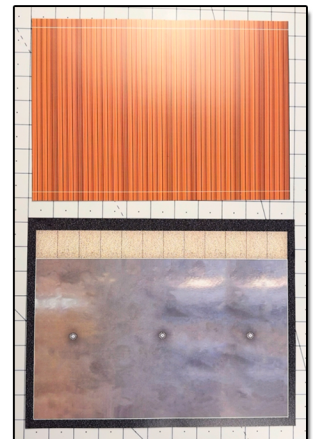
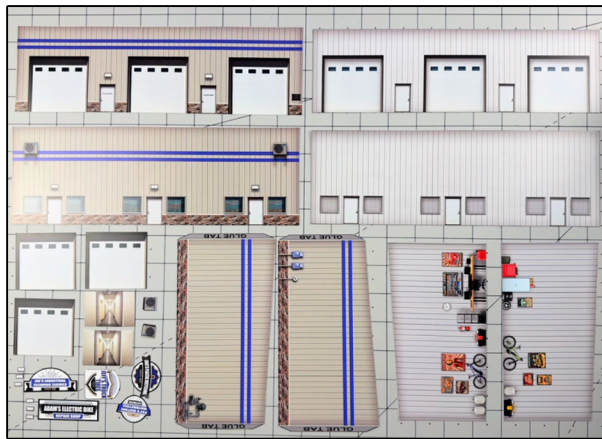
## STEP 1 - Collect the correct tools.

For best results, we suggest you gather at least the most basic tools you will need to complete assembly. While you may find more tools that will help you achieve outstanding results, we suggest you start with the following: Hot glue gun, scissors, variety of water based colored markers, tweezers, straight edge rulers, hobby knife, instant setting high strength hobby glue Plus 4ea, Hot Glue Sticks



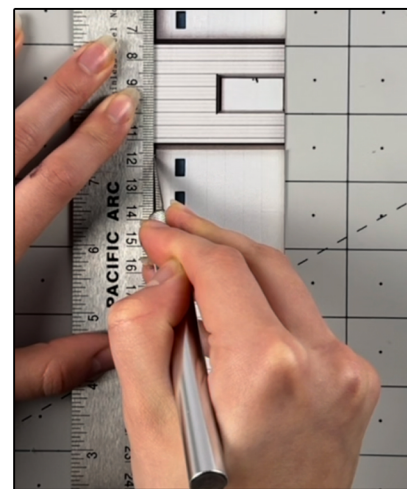
STEP 3 - With appropriate color markers, detail the edges of all the parts you cut out. This will result in a finely finished project once assembled.

Cut out all components and place in a safe area and place all parts in a tray so you do not lose any.



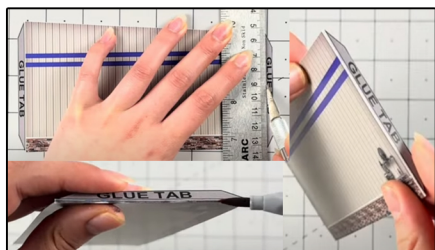
STEP 2 - Empty contents of the kit, carefully cut out all the individual parts to be assembled with a Scissors. The most precise cuts you can make will result in a dramatically better looking finished project. Use smooth long scissor strokes on the bigger parts.

STEP 4 - **Scoring.** Using a Hobby Knife (see picture) and a straight-edge ruler, apply lighter Blade pressure onto the marked fold line on the part you wish to fold. Scoring along these lines to be bent makes bending all printed parts easier, and results in a much cleaner looking fold. Bend parts using the length of your straightedge ruler or a desk edge  
Scoring is an essential skill. Practice on Scrap piece.





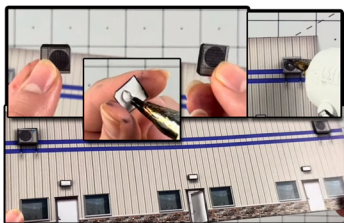
**TIP: Look Ahead At All Photos For Extra Guidance**



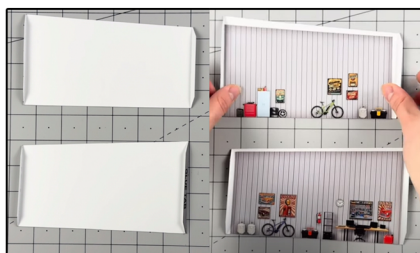
**STEP 5** - With scale building kits, there is usually no correct place to begin. In this case we'll start by prepping the side walls. Score the glue tabs with a hobby knife and a ruler. Fold the tabs 90 degrees inwards from the wall. Use a gray marker to touch up the scored seams and the white edges.



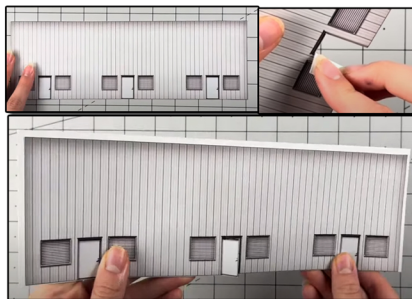
**STEP 8** - Now grab the back wall, pick however many doors you wanna open, once decided cut the side of the door where it opens. Avoid cutting the door frame at all times. Cut the top of the door with a hobby knife and ruler. Then score the side of the door where the hinges are. Gently push inwards to open. Touch up with a watercolor marker.



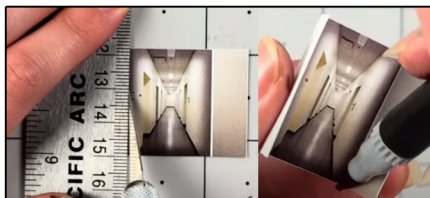
**STEP 11** - The last step to prepping the back wall is to glue the 2D add ons. Place a small amount of hot glue on to the original vents. Let dry, then touch up the vents edges with a marker. After place hot glue behind the vent and place on top of the original vent evenly and correctly. Then do the same steps to secure the 2D add on tiny lights. This step is simple, yet it enhances the details on the wall even more. Highly recommend doing this step!



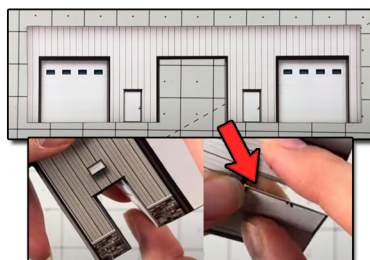
**STEP 6** - Next, grab the inside side walls. Flip over the side walls we just scored, lay the correct inside side wall on top. Line up both wall bottoms evenly together. Then make sure there is an even amount of space of the sides and the top, leaving a small white gap.



**STEP 9** - After, grab the inside back wall. Open the corresponding door to correlate with the back wall once there both together. Open the door by opening it towards you. Touch up any white lines. Then flip over the back wall. Place the inside back wall on top. Lining up the bottoms of the walls together, while leaving a small amount of space on both sides.



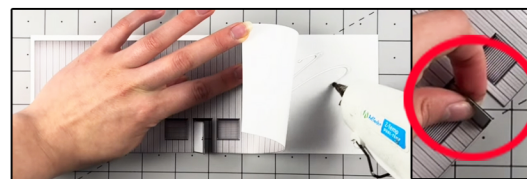
**STEP 12** - Afterwards, grab the Facility hallway illusion rooms. Score the two white lines on the sides lightly. Fold the sides gently inwards. Touch up the white lines with a gray marker. Put aside for later



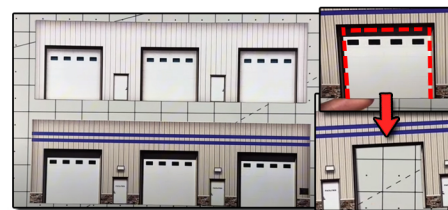
**STEP 14** - Cut out the corresponding garage door/doors on the inside front wall. Use a marker to touch up the inner edges of the garage opening. Then open the two doors on the front and inside wall using the same steps as step 8. Front wall fold the doors inwards, and the inside front wall doors fold towards you. Then glue one the 2D lights on the wall.



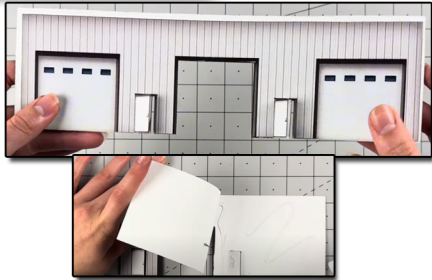
**Step 7** - Once the placement is correct, carefully lay a hand on one half of the wall to hold it together evenly. Lift the other half your hand is not on, and place a small amount of hot glue in between the walls. Press down and hold. Then glue the other side. Repeat these first three steps with both side walls.



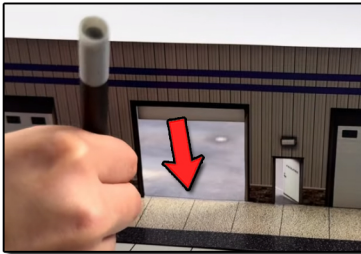
**Step 10** - Once lined up perfectly, repeat step 7 to connect the walls together. Place glue in between the walls to secure, hold until dry, then glue the other side. Place a small amount of hot glue in between the doors. The doors should line up perfectly before connecting permanently.



**STEP 13** - Next, grab the front and inside front wall. Decide which and how many garage doors you want open. After, use scissors to create two slits on the sides of the garage doors. Avoid cutting the garage frame at all times. Then after that use a hobby knife and a ruler to cut the top of the garage. Keep the garage door you cut out for later.



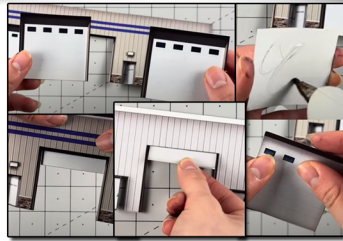
STEP 15 - Now place the inside front wall on top of the white side of the front wall (back-side) Line up the garage open sections and the doors together. Line up the bottoms of the walls too. Once placed correctly together, glue together by placing hot glue in between. Use the pressing hand technique to help glue together. Like in step 7 and 10.



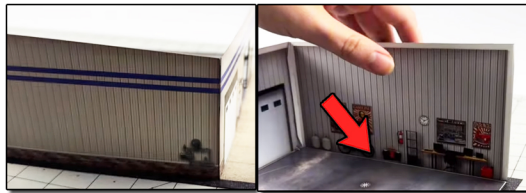
STEP 18- After, grab a gray marker, and the garages that are open, lightly color the white line on the base showing until it matches with the base, including the base by the open doors. Totally optional, but it helps add the realism to the kit.



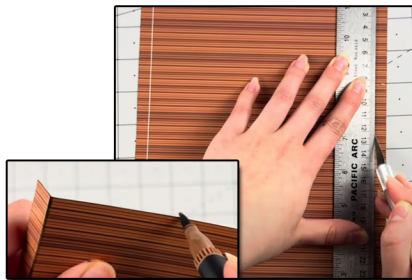
STEP 21- Next, glue the back wall on to the rest of the building, using the side wall glue tabs. But I recommend to glue on side at a side to avoid unevenness. Hold until dry the glue the other side. After place glue behind the wall to secure to base. Hold until dry.



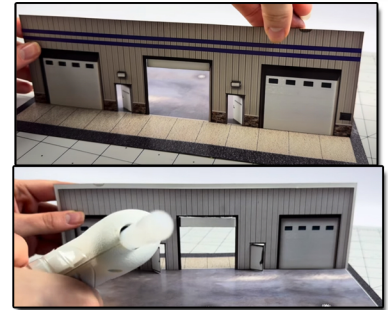
STEP 16- After, grab the cut out garage doors, glue them on to the backs of each other. If you need another door use the ones included in the kit. Cut to desired height (How open do you want the garage to be) Then place glue along the top of the cut part. And place behind the front wall, on top of the garage open section. Place evenly. Flip over to see the results.



STEP 19 - Next, grab the left side wall. Glue the nearest glue tab to the front wall on to the wall evenly. Line up. Then line up the wall with the white line on the base, and place a small amount of hot glue behind the wall, hold until dry. Repeat this step with the right side wall.



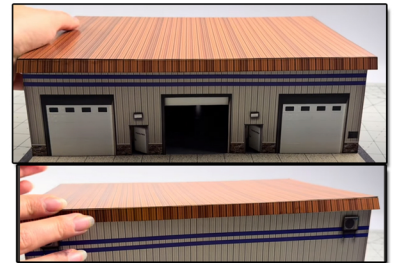
STEP 22- Now the roof, score the two white lines on the roof with a hobby knife and a ruler. Fold the tabs downwards slightly. Touch up the score seams and the white edges with a brown watercolor marker.



STEP 17- Then grab the base, the front of the base is where the sidewalk is. Line up the front wall with the white line on the base. Place small amounts of hot glue behind the wall. Hold 90 degrees up from base until dry.



STEP 20- then grab the illusion rooms, place glue on the sides edges, and place them against the open door sections along the back of the front wall.



STEP 23- Place the roof on top of the building evenly. You can use the back of the roof, the tab to glue against the back wall to act like a hinge. So you can open and close the roof without it falling off. Or you can leave it without gluing it. However you like.

STEP 24- The very last step is to pick three business signs out of the six. Glue them anywhere. To the top of the garage doors, on the garage doors, the walls, the roof. Its endless. After deciding, use hot glue to secure. Place it behind the sign and attach!

**GO TO THE  
LAST PAGE FOR  
THE FINAL RESULTS**





# ASSEMBLY INSTRUCTIONS

*Photo Real Scale Building Kit by*

**INNOVATIVE**  
HOBBY SUPPLY

**Large  
Steel  
Building**



Front of Building



Left Side of Building



Right Side of Building



Rear of Building