



ASSEMBLY INSTRUCTIONS

Photo Real Scale Building Kit by **INNOVATIVE**
HOBBY SUPPLY

**Auto
Racing
Paddock**

READ ALL STEP BY STEP INSTRUCTIONS

- A new alternative to plastic form scale building models!
- Photo Real Scale Building kits may be the most realistic kits available!
- Great for use on model dioramas, slot car, and train track layouts!
- Designed using real building elements for the most realistic appearance



Footprint Dimensions

Model Base
8" x 11"

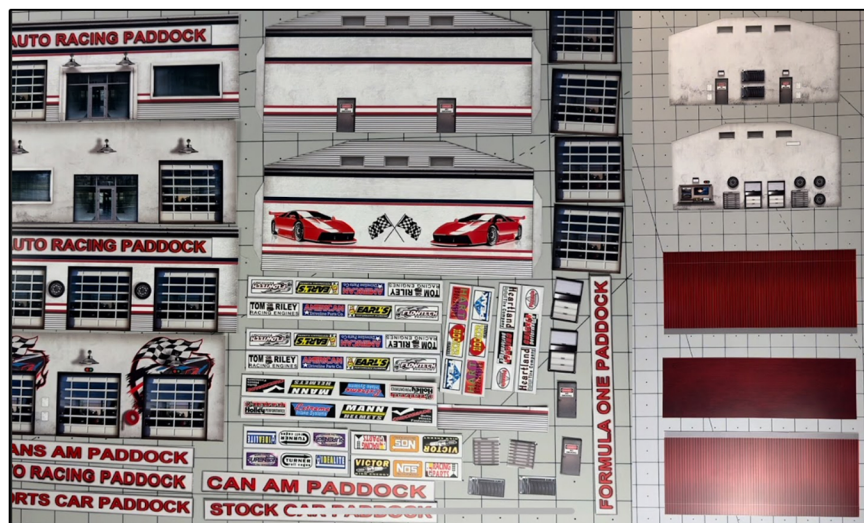
Auto Racing Paddock
Foundation 5" x 9"

All scale building kits offer many optional features, for a variety of creative ways to complete each project!

Free replacement parts are available
call: 866-712-4059

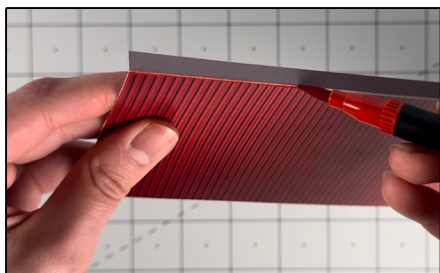


Cut out all components and place in a safe area and place all parts in a tray so you do not lose any.



STEP 1 - Collect the correct tools.

For best results, we suggest you gather at least the most basic tools you will need to complete assembly. While you may find more tools that will help you achieve outstanding results, we suggest you start with the following: Hot glue gun, scissors, variety of water based colored markers, tweezers, straight edge rulers, hobby knife, instant setting high strength hobby glue Plus 4ea, Hot Glue Sticks



STEP 3 - With appropriate color markers, detail the edges of all the parts you cut out. This will result in a finely finished project once assembled.

STEP 2 - Empty contents of the kit, carefully cut out all the individual parts to be assembled with a Scissors. The most precise cuts you can make will result in a dramatically better looking finished project. Use smooth long scissor strokes on the bigger parts.

STEP 4 - **Scoring.** Using a Hobby Knife (see picture) and a straight-edge ruler, apply lighter Blade pressure onto the marked fold line on the part you wish to fold. Scoring along these lines to be bent makes bending all printed parts easier, and results in a much cleaner looking fold. Bend parts using the length of your straightedge ruler or a desk edge
Scoring is an essential skill. Practice on Scrap piece.



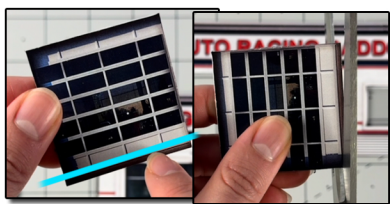
TIP: Look Ahead At All Photos For Extra Guidance



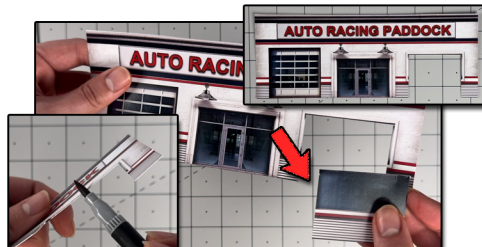
STEP 5 - With scale building kits, there is usually no correct place to begin. In this case, we'll start by prepping the front walls window. The first step is to cut the sides of the inside parts of the windows. When cutting out the inside of the windows, avoid cutting the sides/top of the window frame. Follow the red dotted line on the image above to see where to cut. Cut directly up starting from the bottom of the building while lining up with the inside of window frame, stop cutting once your about to cut the top of the window frame. Then use a hobby knife and a ruler to cut the top of the inside part of the window. Follow the blue line to see where to cut.



STEP 8 - Then carefully line up the inside front wall to the back of the front wall. Lining up the bottoms of the walls and the windows together evenly. Once lined up, place hot glue on one of the backs of the walls to secure them together.



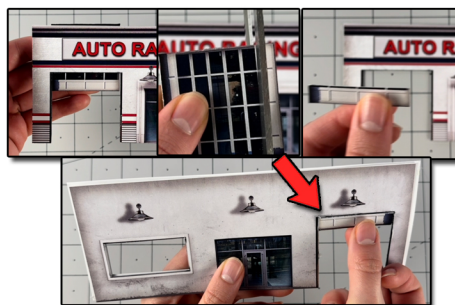
STEP 11 - Grab the cut out garage, and cut off the small concrete bottom with scissors. Follow the blue line. Touch up the bottom of the garage after cutting with a dark water color marker.



STEP 6 - After cutting out the inside part of the window out, throw away the section that came off. Use a light gray water color marker to touch any inside white areas around the open window section.



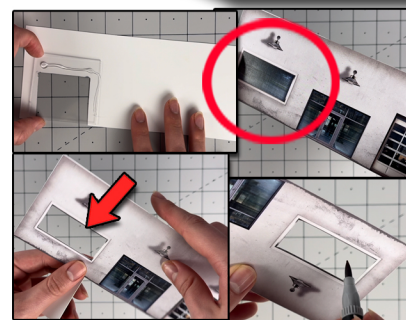
STEP 9 - On to the next step, flip over the front wall so the front side is facing you. Grab the bottom front wall and line up the wall with the missing open section. Glue one side of the bottom wall first to avoid any unevenness with hot glue. Hold until dry, then glue the other side.



STEP 12 - Then place the cut out garage behind the open garage section on the front wall to decide how open you want the garage to be. Once decided cut where you the top of the garage to look like. Then place a small amount of hot glue along the top of the garage opening on the inside front wall. Place the small piece of garage on to the glue evenly. Hold until dry.



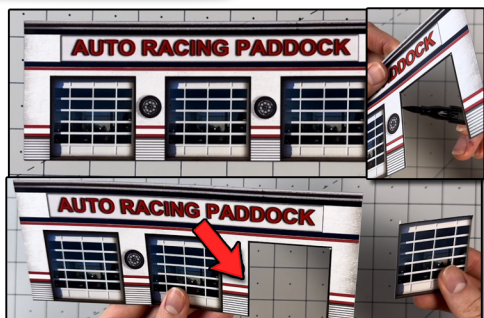
STEP 13 - The finished front wall should look something like the image on the left. Now that are down prepping the front wall. Lets move on to the back wall. Go to page 3 to find out what the next steps are.



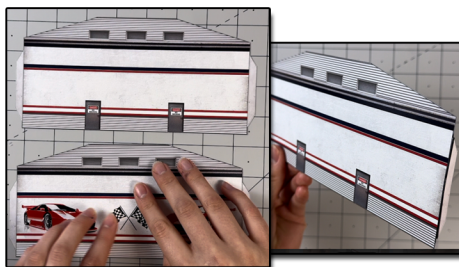
Step 7 - Then flip the front wall so that the white side is facing you. Grab the window plastic that is included in the kit. Take off the white wrapper off the plastic on both sides until it is see through. Place the glass on top of the window section, lining up the bottom. Attach the plastic to the back of the front wall with tape or glue. Make sure the tape or glue is not seen from the front side. Next grab the inside front wall. Cut out the inside part of the window only. Using a hobby knife and ruler on all sides. Once it is out, clean up the cut edges with a gray marker.



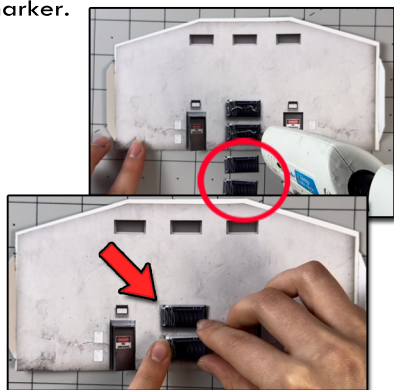
Step 10 - This step is optional. If you want an open garage follow the next few steps. Using scissors cut the sides of the garage, leaving little of black frame left. Then use a hobby knife and a ruler to cut the top of the garage off. Follow the red dotted and solid blue line above to see where to cut. Once cut out, keep the garage. Touch up the inside part of the open garage area with a gray marker.



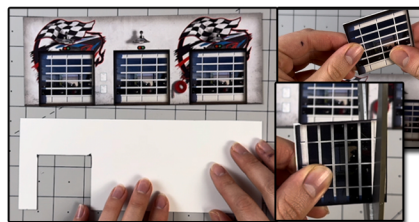
STEP 12 - For the back wall, decide how many and which garages you want to open. Once you do that, cut out the garage out using scissors and a hobby knife. Keep the garage you cut out. After, touch the white cut edges of the inside area of the garage with dark marker.



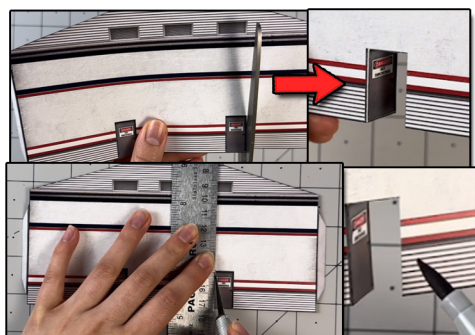
STEP 15- Now that the back wall is prepped, let's score and fold both right and left side wall glue tabs. Use a hobby knife and a ruler. Fold the tabs 90 degrees inwards. After, gently touch up the scored folds with a gray marker.



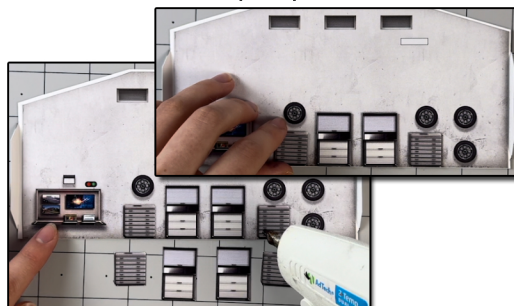
STEP 18- Now grab the optional 2D add ones that match the art on the right inside wall. Place glue on top of the original art. Let dry. Then place hot glue behind the optional 2D items and place on top of the original art evenly.



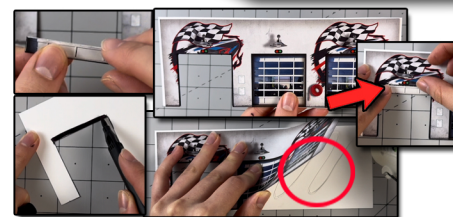
STEP 13- Then flip over the back wall, and grab the inside back wall. Cut out the garage on the inside back wall that corresponds to the garage you cut out earlier on the back wall. Place both of the garages you cut out on to the backs of each other. Glue together. Then cut the small concrete piece off the garages. Use a dark marker to touch up any white areas. Next decide how open you want the garage.



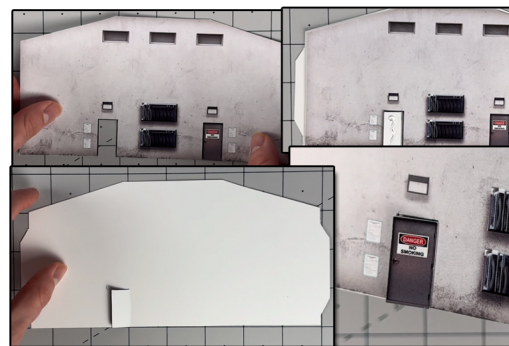
STEP 16 - Afterwards, let's open one of the doors on the right wall. Use scissors to cut the part the door opens (the right side of the door). Then score the left side of the door (where the hinges are). Then cut the top of the door with a hobby knife and a ruler. Fold the door inwards. Use a gray marker to touch up any white areas.



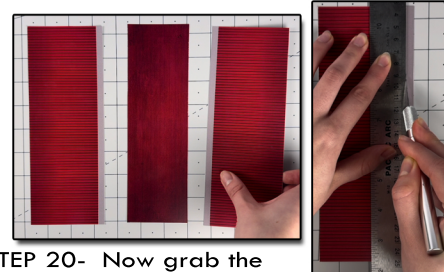
STEP 19- Next grab the left wall, and the left inside wall. Glue them on to the backs of each other, lining up the bottoms. After, grab the optional 2D items that match the left inside wall and glue them on top of the original art, like we did in step 18.



STEP 14- When decided how open you want the garage to be, cut to your preference. Keep the small piece of garage. Grab the back wall. Flip it over so the white side is facing you, grab a dark marker and lightly color around the edges of the open garage section to avoid any white areas showing when gluing the inside back wall on top. Once its colored around the edges, place the inside back wall on top evenly. Lining up the bottoms of the walls and the garages. Use hot glue to connect. Then glue the small piece of garage on to the top of the inside back wall open garage section.

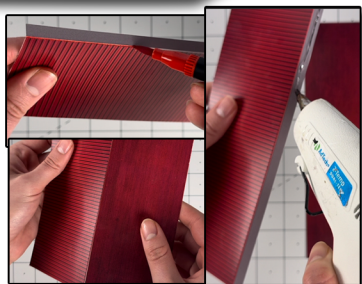


STEP 17- Then grab the right inside wall, cut out the entire door on the wall that matches the door you opened on the right wall. Flip over the right wall so the white side is facing you. Place the right inside wall on top, lining up the bottom of the walls together and the doors. Place a small amount of hot glue behind the door that's white, and place a door that's included in the kit or the one you cut out on top. Line up evenly.

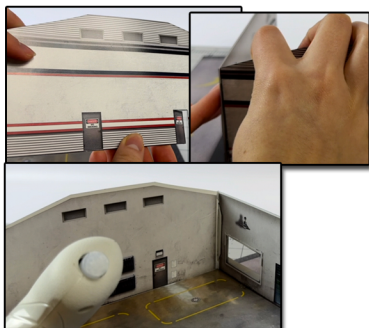


STEP 20- Now grab the middle, front, back sides of the roof. Score between the gray tab and the red with a hobby knife. And fold the gray tab slightly downwards.

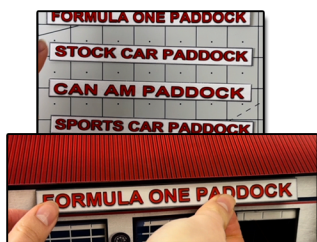
TIP: Look Ahead At All Photos For Extra Guidance



STEP 21 - place hot glue along the gray tab. Line up the red on the front and back sides to the middle's outer edge, placing the gray tab underneath the middle evenly.



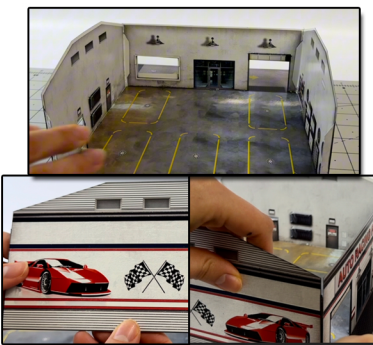
STEP 24- Then glue the right wall on to the front wall using the nearest glue tab. Place hot glue on to the tab, and line up with the front wall evenly. Then place a small amount of hot glue behind the wall, hold until dry. I recommend placing glue the top and bottom corners between the walls, and



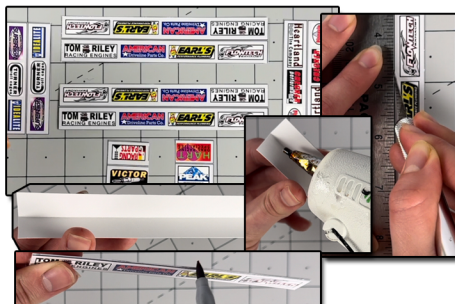
STEP 27- Grab all the Paddock signs, pick two. Then place hot glue along the original signs on the back and front walls, let dry. Then place glue behind the two picked signs and place on to of the original signs evenly.



STEP 22 - After the front and back sides of the roof is connect to the middle it should be able to fold nicely. Put aside for later.



STEP 25 - Next grab the left wall, repeat step 24 techniques to secure the left wall on to the front wall.

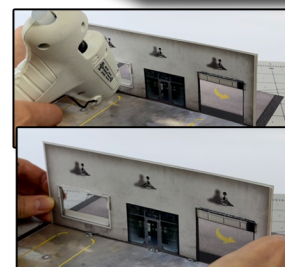


STEP 28- Next grab all the fences, score the white line in the middle on all of them with a hobby knife and a ruler. After scoring fold the top and bottom side downwards towards each other. Place glue along the middle of them, fold together nicely. With a gray marker touch up the top of the fences.

STEP 30 continued - Place hot glue on the sides of fence to connect them on to each other. After they are connected, overlap the first base on to the second base slightly, just until its about to hit the second bases yellow lines.



STEP 30- Then grab the second base and the other fences. Arrows need to be pointing towards the building. Glue both of the base two fences on the front black lines, furtherest from the building. After glue the left or right fences on. Connect them to the front fence.



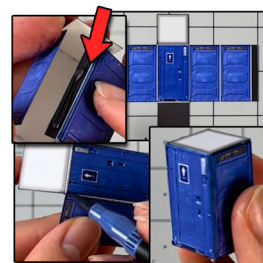
STEP 23 - Line up the front wall on the front white line on the base. Front of the base is closest to the yellow arrows and gray concrete. Place a small amount of glue behind the front wall. Hold 90 degrees upwards from the base until dry.



STEP 26 - After, use the right & left walls glue tabs to connect the back wall on to the rest of the building. Glue on side at a time. Then place a small amount of hot glue behind the back wall.



STEP 29- After, grab the two smallest fences and glue them against the building and the base, lining up with the black line on the base.



STEP 31 - Lastly, grab both of the porty potty's. Score all of the white lines. Fold the tabs all inwards into each other. Then touch up any white lines with a blue marker. Use the gray tab to connect all the sides together, use hot glue. Line up evenly. Then glue the top and bottom to the rest of the cuboid. Place anywhere you would like. Go to the last page to see the final results.

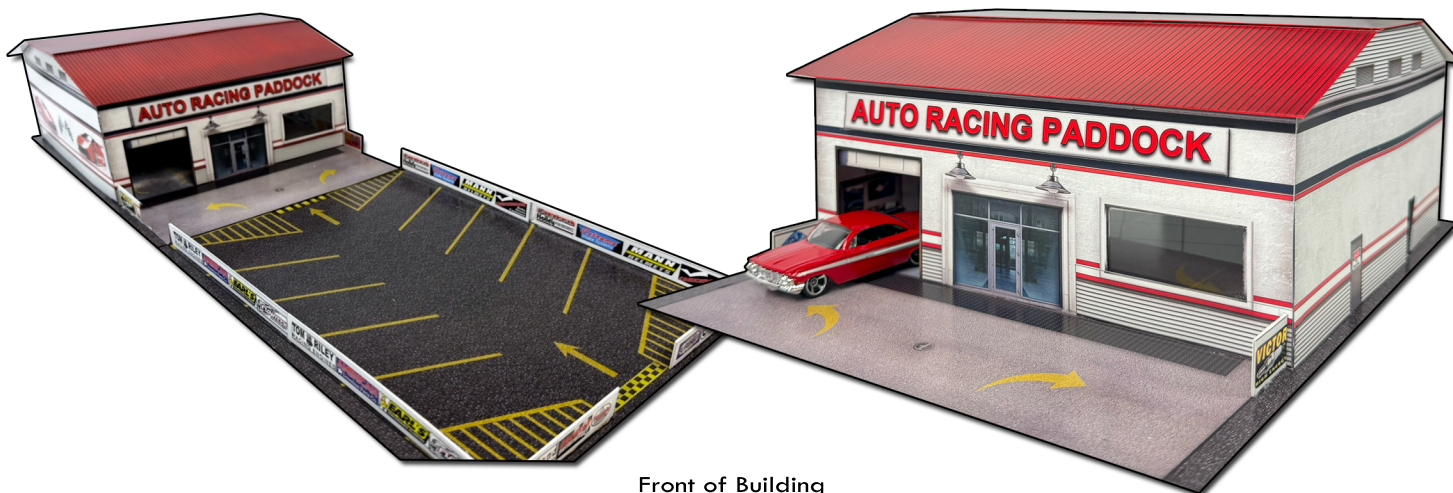


ASSEMBLY INSTRUCTIONS

Photo Real Scale Building Kit by

INNOVATIVE
HOBBY SUPPLY

**Auto
Racing
Paddock**



Front of Building



Left Side of Building



Right Side of Building



Rear of Building