



ASSEMBLY INSTRUCTIONS

Photo Real Scale Building Kit by **INNOVATIVE** HOBBY SUPPLY

Trackside Merchandise

READ ALL STEP BY STEP INSTRUCTIONS

- A new alternative to plastic form scale building models!
- Photo Real Scale Building kits may be the most realistic kits available!
- Great for use on model dioramas, slot car, and train track layouts!
- Designed using real building elements for the most realistic appearance



Footprint Dimensions

Model Base
8" x 11"

Trackside Merchandise
Foundation 5" x 9"

All scale building kits offer many optional features, for a variety of creative ways to complete each project!

Free replacement parts are available
call: 866-712-4059

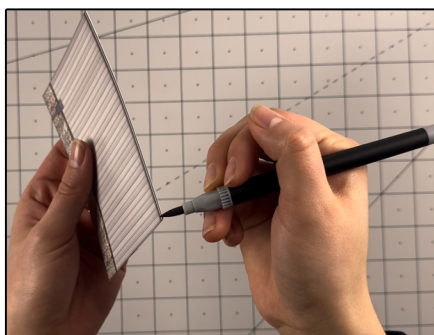


Cut out all components and place in a safe area and place all



STEP 1 - Collect the correct tools.

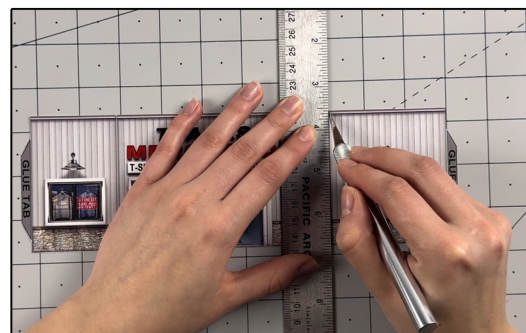
For best results, we suggest you gather at least the most basic tools you will need to complete assembly. While you may find more tools that will help you achieve outstanding results, we suggest you start with the following: Hot glue gun, scissors, variety of water based colored markers, tweezers, straight edge rulers, hobby knife, instant setting high strength hobby glue Plus 4ea, Hot Glue Sticks



STEP 3 - With appropriate color markers, detail the edges of all the parts you cut out. This will result in a finely finished project once assembled.

STEP 2 - Empty contents of the kit, carefully cut out all the individual parts to be assembled with a Scissors. The most precise cuts you can make will result in a dramatically better looking finished project. Use smooth long scissor strokes on the bigger parts.

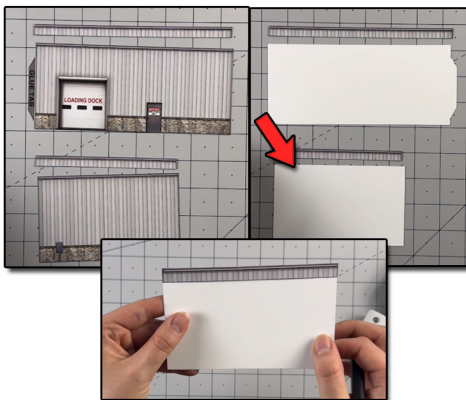
STEP 4 - **Scoring.** Using a Hobby Knife (see picture) and a straight-edge ruler, apply lighter Blade pressure onto the marked fold line on the part you wish to fold. Scoring along these lines to be bent makes bending all printed parts easier, and results in a much cleaner looking fold. Bend parts using the length of your straightedge ruler or a desk edge
Scoring is an essential skill. Practice on Scrap piece.



TIP: Look Ahead At All Photos For Extra Guidance



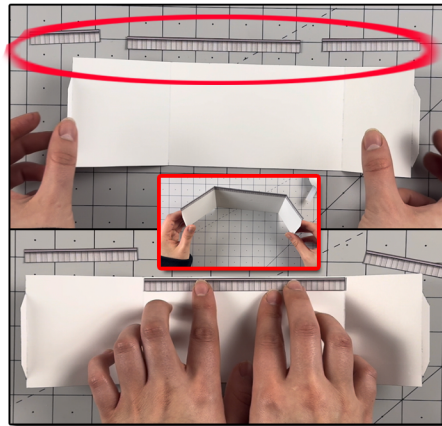
STEP 5 - With scale building kits, there is usually no correct place to begin. In this case, we'll start by prepping the Front wall. The first step is to score and fold the white lines. Use the image above to help see where to score. Follow the red dotted lines. Fold the sides of the front wall slightly inwards. For the glue tabs fold inwards 90 degrees.



STEP 8 - Then grab the back left and right walls including the matching back top walls. Repeat steps 6 and 7 as it is the same exact steps to assemble the back top walls. Flip over the walls so the white side is facing you, place the matching back top walls on to the correct wall, glue, then touch up any leftover white spots. Put aside for later.



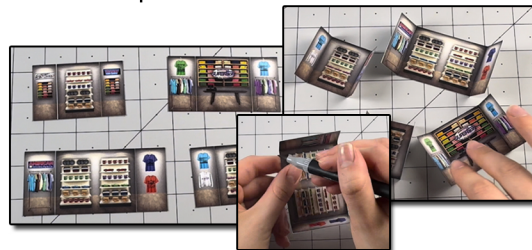
STEP 12 - Then flip over the front wall so the art side is facing you. Grab the bottom window front walls and match the correct wall to the correct place like shown above. Line up evenly with the bottom of the front wall and window frame. When gluing glue one end at a time to avoid any unevenness. Hold one side until dry, then move on to the next. Repeat this step for all windows.



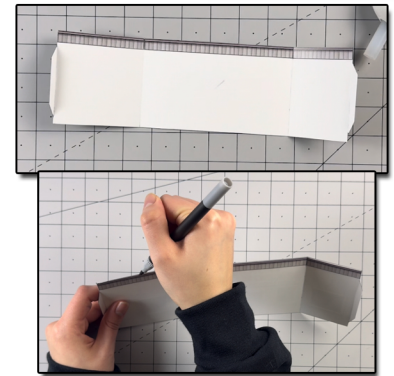
STEP 6 - After scoring and folding, grab the back top walls. Flip the front wall so the white side is facing you, still making sure that the top of the building is upwards. Then match the correct back top walls to the correct side of the front wall. Place the back top walls on to the back top of the front walls evenly like shown above. Use hot or white glue to attach. Make sure to avoid gluing the back top walls directly on top of the score folds we made earlier as it would infer with the front wall when folding.



STEP 9 - On to the next step, grab the back left and right walls including the matching back top walls. Repeat steps 6 and 7 as it is the same exact steps to assemble the back top walls. Flip over the walls so the white side is facing you, place the matching back top walls on to the correct wall, glue, then touch up any leftover white spots. Put aside for later.



STEP 13 - Put front wall aside. Grab the four front wall window illusion rooms and score the white lines. When scoring be gently because if you score too hard, when folding inwards later it can break. Fold the side tabs inwards slightly. Use a marker to touch up the scored lines if needed.



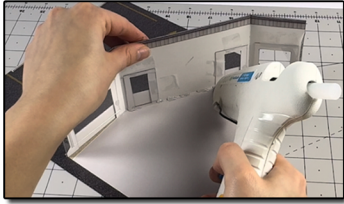
Step 7 - Once the back top walls are assembled, grab a light gray watercolor marker and gently touch up any white spots showing behind or on the side of the back top walls/front wall.



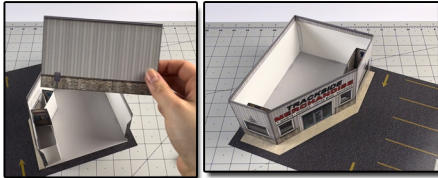
Step 10 - After the inside part of the windows are cut out, it should look like the image above. Use a gray marker to touch up the inside edges of the windows. Next flip over the front wall so the white side is facing you. Grab the four pieces of window plastic that is included in the kit. Carefully take off the wrapper on both sides until you can see through the plastic. Place the correct size window plastic on to the right window open section we cut off. Before attaching make sure the window is completely covered, if there is a small open section towards the bottom it is OK because it will be covered. Use tape or glue to attach.



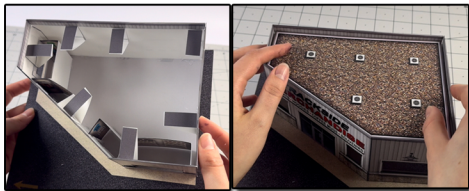
STEP 14 - Next score and fold the back left walls glue tab with a hobby knife and ruler. Fold 90 degrees inwards.



STEP 12 - Once everything is mostly ready, let's secure the front wall on to the base. Line up the wall evenly on to the white line. Glue the middle of the front wall first by placing small amounts of hot glue behind the wall. Hold until dry. Then line up the other walls and glue down. Make sure to avoid placing glue too close to the outer edge, as it would interfere with the other walls later on.



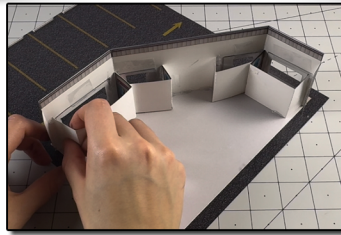
STEP 15- Now that the back left wall is secured to the front wall and base, grab the back right wall and use the back left wall and front right glue tabs to connect the back right wall to the rest of the building. Glue one side at a time. Use hot glue and hold until dry.



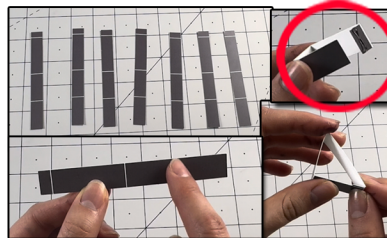
STEP 18- Once they are all glued to the inside of the building they should look something like this. Then place the roof on to the supporters gently and evenly.



STEP 21 - After, grab the sign hanger and the optional racing merchandise sign. Place the merchandise sign together evenly, then place a small amount of hot glue behind one of them, place the other one on top, and hold. Then grab the sign hangers and glue them on to the backsides of each other evenly.



STEP 13- Then after the front wall is attached to the base, place the correct illusion room behind the windows. Glue the illusion room sides close to the window edges to avoid any opening areas that could show through the front. Use hot glue to secure. Hold until dry.



STEP 16 - After grab all seven of the bottom roof supporters. Score all the white lines. And fold into a triangle like shown above. Use the small tab to connect the sides together. Glue the tab on the inside of the longest side. Use hot glue, hold until dry. Repeat for all seven supporters.

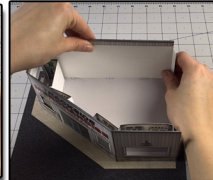
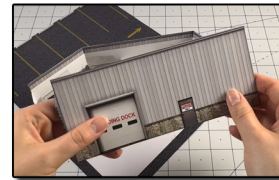


STEP 19 - Now that the building is done, it's time to assemble the add ons. First let's score the glue tabs on the red awnings. Fold the tab downwards. Use hot glue to connect them to the correct matching window size. Glue them on to the top white window frames. Slightly bend the red side downward after drying.

STEP 21 Continued - Glue the shortest end of the sign hanger on to the back of the sign like shown in the image on the left side. Once assembled, place anywhere you like. Use hot glue and hold until dry.



STEP 22 - Next, score and fold the optional sign like shown in the picture. Place anywhere along the sidewalk.



STEP 14- Next grab the back left wall and use the glue tab on the front left side wall to connect the walls together, line up evenly. Then line up the wall with the white line on the base. Place hot glue behind the wall, hold until dry.



STEP 17- Before gluing the roof supporters on to the inside of the building make sure the tab is facing downwards like shown in the image above. Line up the supporters right against the back top walls. Spread the supporters evenly around the inside of the building.



STEP 20- Then grab the optional 2D front wall sign and place a small amount of hot glue on to the original sign. Let dry. Then place a small amount of hot glue behind the add on sign. Place on top of the original sign, line up, and hold until dry.



STEP 23 - Lastly, let's assemble the street sign. Score the white lines. Fold the sign into a cuboid. Use hot glue to connect the sides. After, locate the circle on the bottom of the sign, place glue then place the black straw on top, holding it straight. Hold until dry. Then place anywhere on the base. Use hot glue.



ASSEMBLY INSTRUCTIONS

Photo Real Scale Building Kit by

INNOVATIVE
HOBBY SUPPLY

**Trackside
Merchandise**



Front of Building



Left Side of Building



Right Side of Building

Rear of Building

