



# ASSEMBLY INSTRUCTIONS

Photo Real Scale Building Kit by **INNOVATIVE**  
HOBBY SUPPLY

**Haunted  
House**

## READ ALL STEP BY STEP INSTRUCTIONS

- A new alternative to plastic form scale building models!
- Photo Real Scale Building kits may be the most realistic kits available!
- Great for use on model dioramas, slot car, and train track layouts!
- Designed using real building elements for the most realistic appearance



## Footprint Dimensions

Model Base  
8" x 11"

Haunted House  
Factory 5" x 9"

*All scale building kits offer many optional features, for a variety of creative ways to complete each project!*

Free replacement parts are available  
call: 866-712-4059

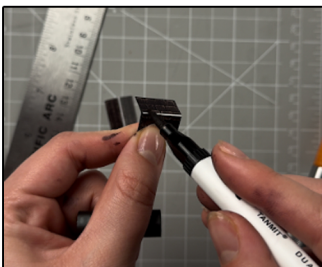


Cut out all components and place in a safe area and place all parts in a tray so you do not lose any.



## STEP 1 - Collect the correct tools.

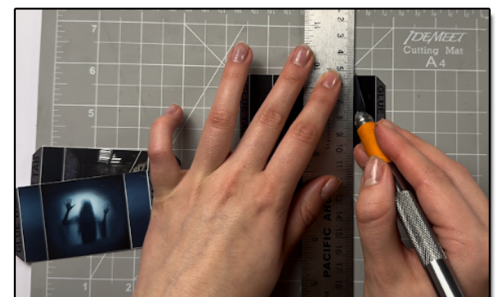
For best results, we suggest you gather at least the most basic tools you will need to complete assembly. While you may find more tools that will help you achieve outstanding results, we suggest you start with the following: Hot glue gun, scissors, variety of water based colored markers, tweezers, straight edge rulers, hobby knife, instant setting high strength hobby glue Plus 4ea, Hot Glue Sticks

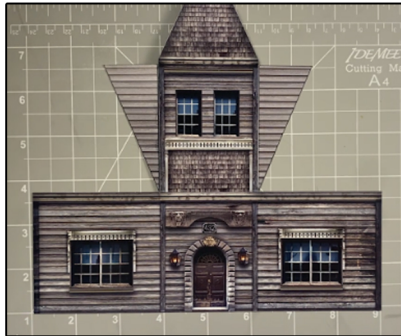


STEP 3 - With appropriate color markers, detail the edges of all the parts you cut out. This will result in a finely finished project once assembled.

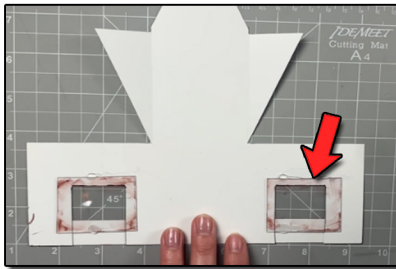
STEP 2 - Empty contents of the kit, carefully cut out all the individual parts to be assembled with a Scissors. The most precise cuts you can make will result in a dramatically better looking finished project. Use smooth long scissor strokes on the bigger parts.

STEP 4 - **Scoring.** Using a Hobby Knife (see picture) and a straight-edge ruler, apply lighter Blade pressure onto the marked fold line on the part you wish to fold. Scoring along these lines to be bent makes bending all printed parts easier, and results in a much cleaner looking fold. Bend parts using the length of your straightedge ruler or a desk edge  
Scoring is an essential skill. Practice on Scrap piece.

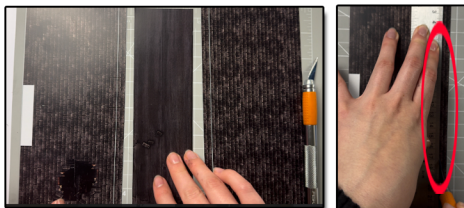




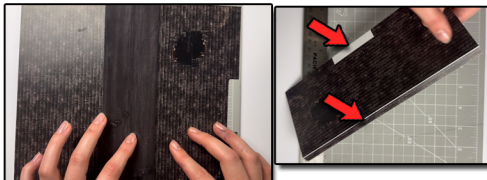
**STEP 5** - With scale building kits, there is usually no correct place to begin. In this case, we'll start by prepping the front wall and back wall. Score the side walls on the front wall. Score the white lines, then fold the side walls inwards.



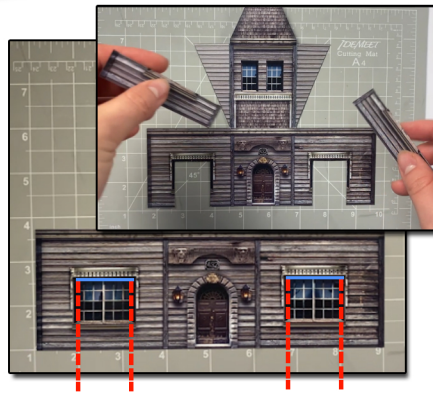
**STEP 8** - \*You can use a water color marker to detail the window to make it look older.\* Once the glass is ready, place them on top of the open sections evenly. Use tape or hot glue to secure them on to the front wall.



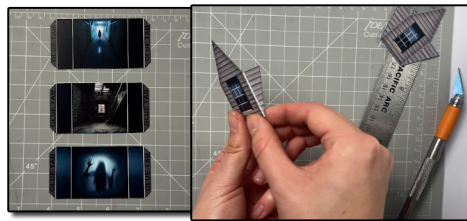
**STEP 11** - Next, let's assemble the main roof. Grab the middle of the roof, Front, and Back side of the roof. Score the white line on both Front and back sides. Fold slightly inward.



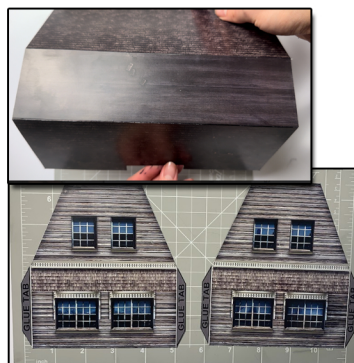
**STEP 12** - Then, cut out the white section on the front side of the roof carefully with scissors or a hobby knife. After use the side tabs on the front and back sides we scored earlier to place the middle roof on top. Line up evenly. I recommend using a small amount of hot glue when securing the roof sides on to the middle part of the roof.



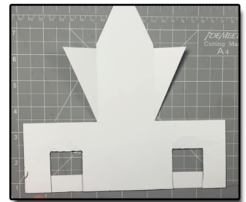
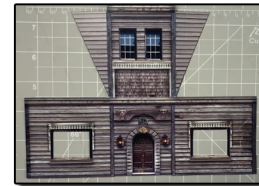
**STEP 6** - This step is optional. If you want to use the front window illusion rooms, continue reading step 6. Avoid cutting the window frames. Grab a pair of scissors, cut by starting from the bottom of the wall while lining the inside of the window up until you hit the top of the window frame. Cut slits on both sides of the inside parts of the windows. Then use a hobby knife and a ruler, cut the top of the inside part of the window below the window frame. Follow the red dotted line and blue solid line to see where to cut.



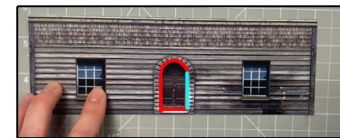
**STEP 9** - Now that the front wall is prepared, let's score the small dormers and the illusion rooms. Score all of the white lines. For the illusion rooms fold the side walls inwards and the glue tabs outwards. Then for the small dormers, fold the side walls inwards like shown above on the right photo. Then put all of the aside for later.



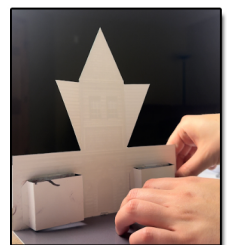
**STEP 13** - The roof should be able to fold just like the picture above. Put aside for later. Then grab the side walls. Score and fold the glue tabs carefully. Put aside.



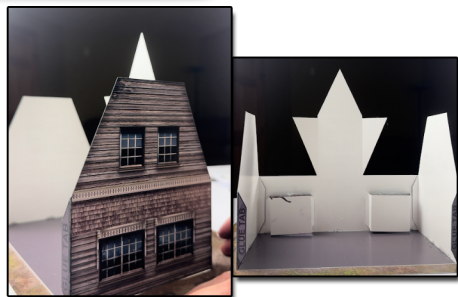
**Step 7** - Then grab the window bottom wall add on for glass cut outs, both left and right sides. Place them evenly on the bottom of the cut out sections so the bottom of the wall is lined up with the add ons. Use white or hot glue to secure them to the front wall. Then flip over so the white side is facing you. Grab both pieces of glass that's included in the kit. Carefully take off the wrapper on both sides until the glass is see through.



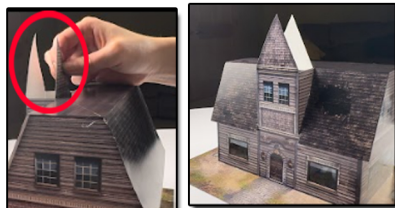
**Step 10** - After, grab the back wall. This part is optional. I am going to cut/score open the back door. If you want to use the back door illusion room continue reading step 10. Cut the bottom part of the inside of the door with a hobby knife, avoid touching the bottom door step. Next cut the left side of the inside part of the door with scissors, avoid cutting the door frame at all times. Then cut the top of the door with a hobby knife. Stop cutting with the hobby knife until you hit where the door hinges would be. Score the inside part of the door where the hinges would be. The door should open. Fold inside the building.



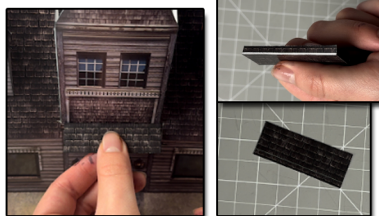
**STEP 14** - Once mostly everything is prepared, let's glue on the front wall on to the base. Make sure before gluing the front wall is placed on to the front side of the base (where the path is). Line up evenly, place small amounts of hot glue behind the front wall and hold until dry. Then secure the front window illusion rooms to the behind the front wall windows evenly.



STEP 13- Now let's glue the side walls on to the front wall. Make sure to glue the correct side wall on to the correct side. Use the glue tabs to secure against the front wall. Line up evenly. Use white or hot glue. Then place a small amount of hot glue behind the side walls.



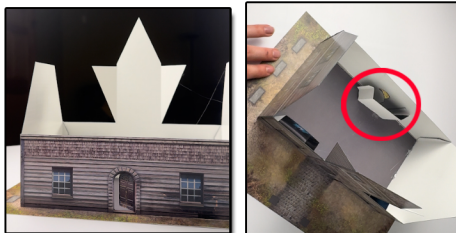
STEP 16 - On to the next step, grab the Back of front middle roof peak, place it evenly behind the front peak. Use a small amount of hot glue to secure it against the roof, hold until dry.



STEP 19 - Next, grab the Front door awning. Score the white line, and fold the small tab downwards. Use the tab to glue it against the front wall. Place it right above the door, like shown above.



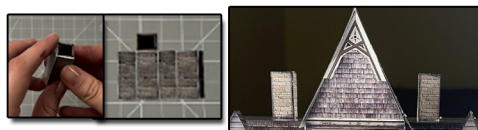
STEP 22 - Then grab the gargoyles. A front and back one. Glue them on to the backs of each other with a small amount of hot glue. Fold the wings slightly inwards to create a curve. Place them on to the gate pillars. You can also use the other gargoyles and place them anywhere you like.



STEP 14- Next, apply the back wall to the rest of the building, use white or hot glue. Use the same technique when gluing the rest of the building together. After the buildings walls are together, place the back door illusion behind the open back door. Use hot glue to secure down onto the base.



STEP 17- Then, grab the small dormers and glue them somewhat in the middle of the front right and left sides of the roof. Use hot glue to secure. Hold straight until dry. After, place the back small roof peaks behind the original small dormer peaks, like what we did in step 16.



STEP 20 - On to the next step, grab the optional chimneys, score the white lines. Fold them into a box. Use the small black tab to connect the sides. Use hot glue. Place them anywhere on top of the middle part of the roof. Use hot glue to secure them on the roof.



STEP 22 - Lastly, grab the graves, front and back. Make sure before gluing the front and backs together that the names match. Glue them on top of the grave stones located on the sides of the base.



STEP 15- When all the walls are together, place the main roof on to the building. Use the main roofs front indent to look in with the front walls tower. Use glue to secure the roofs sides on to the walls. Hold until dry. Then fold the side walls on the front wall inwards 90 degrees on to the roof. Use hot glue to secure the walls against the roof. Place the glue inside of the walls. Hold until dry.



STEP 18- Now grab the small dormer roof and the bigger dormer roof. Score and fold the white lines. Then place them on top of the correct dormers. Use hot glue to secure them. Hold until dry.



STEP 21 - After, grab the left and right front gates. Score the white lines. Cut out the small white square on the gate with a hobby knife. Then fold the brick sides into a box like shown above, glue the sides together. Make sure to score the gate so you can fold it inwards. After both gates are done, place them on to the squares located on the front of the base.

# GO TO LAST PAGE FOR RESULTS



# ASSEMBLY INSTRUCTIONS

*Photo Real Scale Building Kit by*

**INNOVATIVE**  
HOBBY SUPPLY

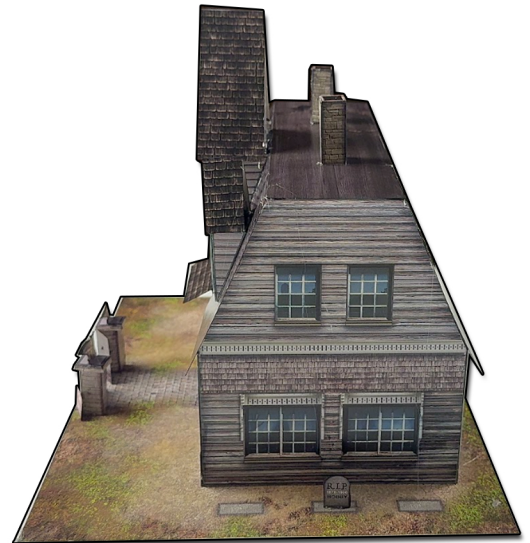
**Haunted  
House**



Front of Building



Left Side of Building



Right Side of Building



Rear of Building