

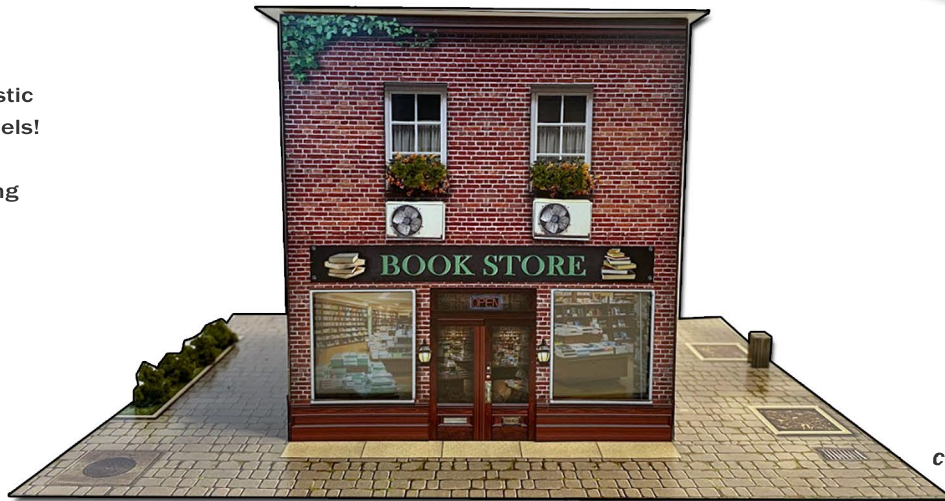


ASSEMBLY INSTRUCTIONS

Photo Real Scale Building Kit by **INNOVATIVE**
HOBBY SUPPLY

**Book
Store**

- A new alternative to plastic form scale building models!
- Photo Real Scale Building kits may be the most realistic kits available!
- Great for use on model dioramas, slot car, and train track layouts!
- Designed using photos of real building elements for the most realistic appearance



Footprint Dimensions

Model Base
8" x 11"

Book Store 5" x 9"

All scale building kits offer many optional features, for a variety of creative ways to complete each project!

Free replacement parts are available
call: 866-712-4059

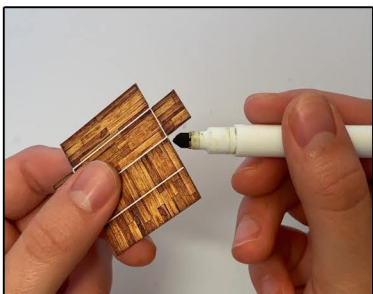


STEP 1 - Collect the correct tools.

For best results, we suggest you gather at least the most basic tools you will need to complete assembly. While you may find more tools that will help you achieve outstanding results, we suggest you start with the following: Hot glue gun, scissors, variety of water based colored markers, tweezers, straight edge rulers, hobby knife, instant setting high strength hobby glue.

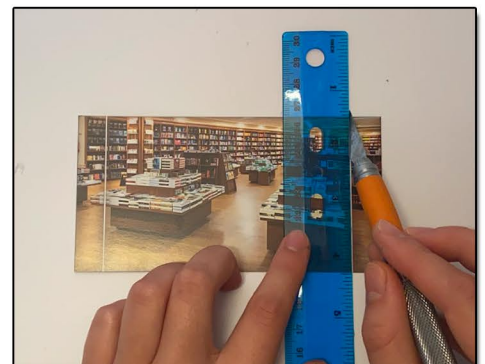


STEP 2 - Empty contents of the kit, and carefully cut out all the individual parts to be assembled. Please note that the most precise cuts you can make will result in a dramatically better looking finished project.



STEP 3 - With appropriate color markers, detail the edges of all the parts you cut out. This will result in a finely finished project once assembled.

STEP 4 - **Scoring.** Using a scoring tool (see picture) and a straight-edge ruler, apply pressure onto the surface of the part you wish to bend, on top of a line you want to fold. This is called scoring. Scoring along lines to be bent makes bending all printed parts easier, and results in a much cleaner looking fold. Bend parts using the length of your straightedge ruler. Scoring is an essential skill.





STEP 5 - With scale building kits, there is usually no correct place to begin. In this case, we'll start with the Left Side wall and Front Wall windows. The first step is to cut the sides of the inside parts of the windows. When cutting out the inside of the windows, avoid cutting the sides/top of the window frame (the white lines). Follow the blue line on the image above to see where to cut. Cut directly up starting from the bottom of the building while lining up with the inside of window frame, stop cutting once your about to cut the top of the window frame. Repeat for both left and front walls.



STEP 8 - Now flip the Front and Left walls so that the white side is facing towards you, grab the 4 1/4 x 2 1/4 inch glass and the 5 x 2 inch glass included in the kit. The bigger piece of glass is for the front wall, smaller piece of glass is for the left wall. Put on plastic gloves before touching the glass to avoid finger prints. Take off the plastic off the windows carefully on both sides until you can see through the glass. Place the correct glass on to the correct wall evenly so that the window opening is completely covered. Use scotch tape or hot glue to secure the glass on to the back of the walls.



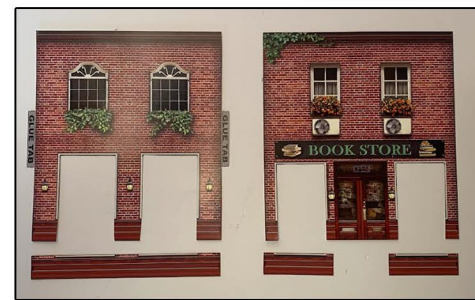
STEP 6 - After making slits on both sides of the windows on the Front and Left wall, now we have to cut off the top of the windows. When cutting off the top of the windows use a straight edge and a hobby knife. Line up the straight edge evenly on the top/inside of the window avoiding the window frame. Use the Hobby knife to cut carefully. When done cutting, the inside of the window and part of the bottom of the building should come off easily. Follow the red lines on the image above to see where to cut. Repeat for both Left and Front walls.



STEP 9 - Next score and fold the white lines on the Front and Left illusion rooms. Fold the side walls slightly inwards.



STEP 10 - Place the correct illusion room to the correct wall. Place the illusion rooms on to the back side of the walls on to the glass. Make sure the art is facing the right way and not upside down. Before gluing, check if the front of the windows look correct and even. Then secure with hot glue. Repeat for both Front and left walls.



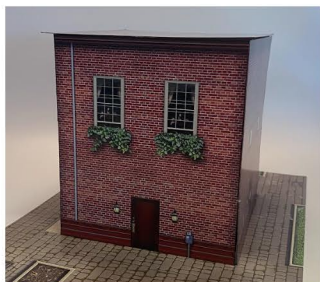
Step 7 - The walls should look something like this. Now grab the Optional Add on Left and Front walls. Make sure the correct Add on Front Walls are in the correct side. Before gluing place the add on walls on top of the missing bottom sections of the Book store walls to line up. White side of the Add on walls need to be upward. When gluing the walls on, glue one end at a time, so it's even. Place the glue on the actual Book store walls.



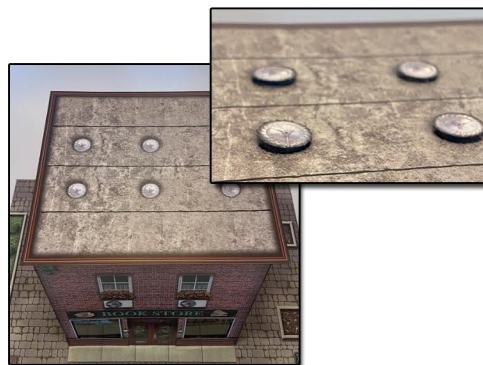
Step 11 - Now that the Front and left wall is done, glue the Front wall to the base. The front of the base is where the sidewalk is located. Place the wall on to the white line evenly. Make sure you can't see the white line in the front of the wall before gluing. Place small globs of hot glue behind the front wall, hold 90 degree's upwards from the base until dry.



Step 12 - After the Front wall is glued, glue the correct side walls to the correct sides, use the glue tabs on the side walls to connect to the front wall. Line up the walls before gluing with hot or white glue.



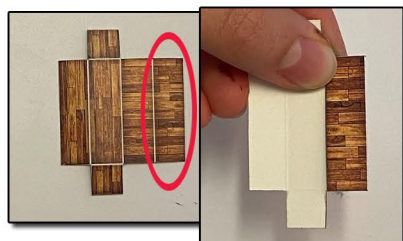
STEP 13 - After the Side walls are secure to the front wall, connect the back wall on to the rest of the building, use the glue tabs on the side walls to connect the back wall. Use white or hot glue. You can place hot glue behind the building walls to really secure them to the base, also between the walls too. Hold until dry.



STEP 14 - Once the walls are all together, place the roof on top of the building. You can glue roof on to place with white or hot glue. Then you can glue on the Optional Add on 3D roof vents on top of the original roof vents like shown above.



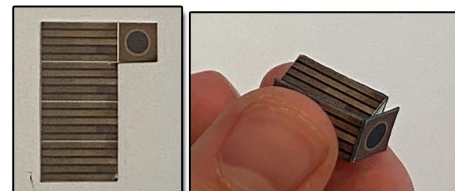
STEP 15 - Next Score and fold the Optional Wall vents on the white lines. Fold into a box like shown above. Use hot glue to secure the sides together. Assemble all 4 of them. Place a small amount of hot glue behind each one, one at a time. And place an individual vent on to a original vent on the front/back walls for a 3D effect. Repeat on all vents.



STEP 16- There's Optional add on benches, Score and fold the white lines, the part that's circled on the image above, fold the rectangle downwards on to the back like shown above, place a small amount of hot glue between and hold down.



STEP 17 - the part you folded downwards and glued, fold that section upwards 90 degrees from the middle section that's between two small tabs. Then fold the middle section outwards, the two small tabs on the side fold downwards including the last tab to connect everything. Like shown above.



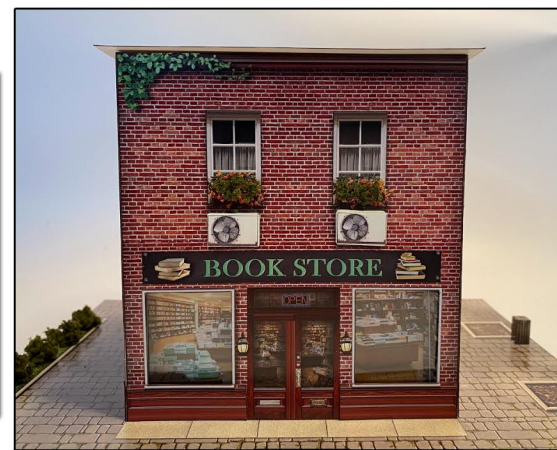
STEP 18 - Next grab the optional garbages and score/fold. Fold into a box then fold the top downwards on top of the box. Glue together with hot glue.



STEP 19- You can place the benches and the garbages anywhere you would like on the base.



STEP 20- Glue on the Optional 3D book Store Sign and the building is complete.



**Go to the next page to see
the final results.**

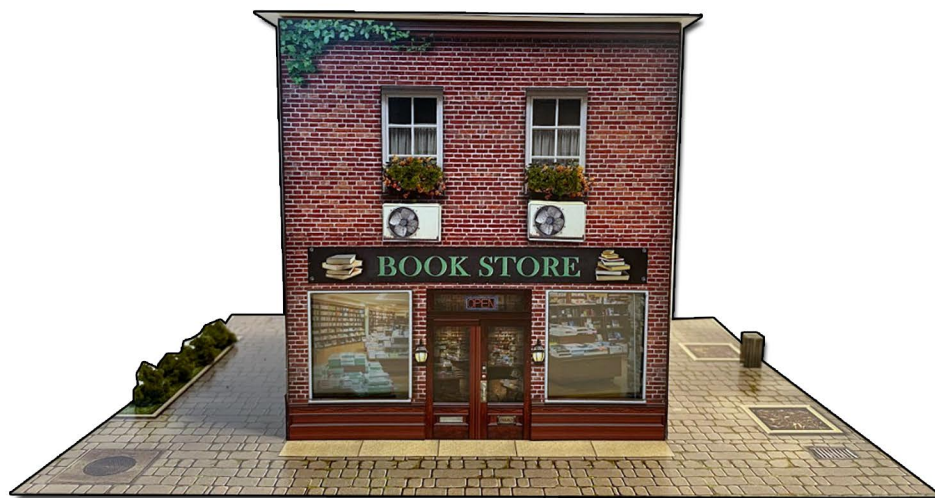


ASSEMBLY INSTRUCTIONS

Photo Real Scale Building Kit by

INNOVATIVE
HOBBY SUPPLY

**Book
Store**



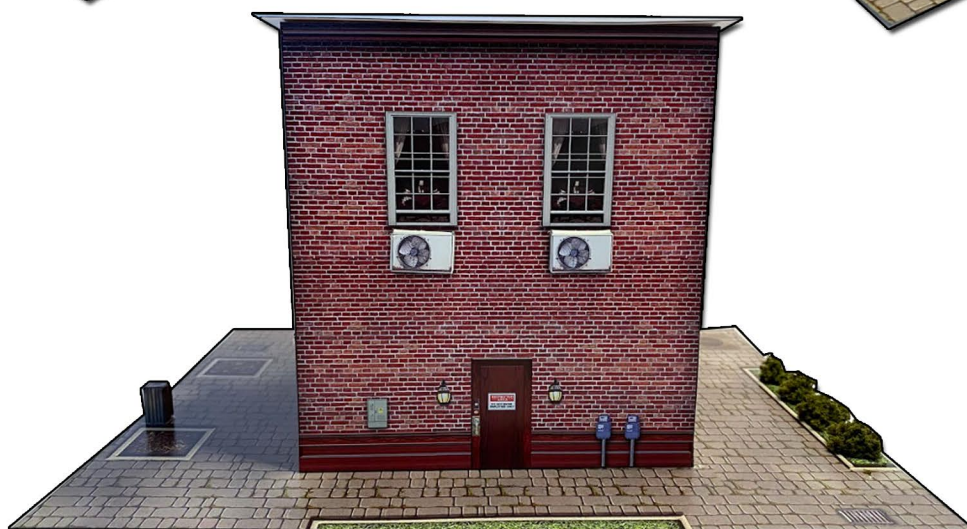
Front of Building



Left Side of Building



Right Side of Building



Rear of Building