



ASSEMBLY INSTRUCTIONS

Photo Real Scale Building Kit by **INNOVATIVE**
HOBBY SUPPLY

Old Red Barn

- A new alternative to plastic form scale building models!
- Photo Real Scale Building kits may be the most realistic kits available!
- Great for use on model dioramas, slot car, and train track layouts!
- Designed using photos of real building elements for the most realistic appearance



Footprint Dimensions

Model Base
8" x 11"

Old Barn 5" x 9"

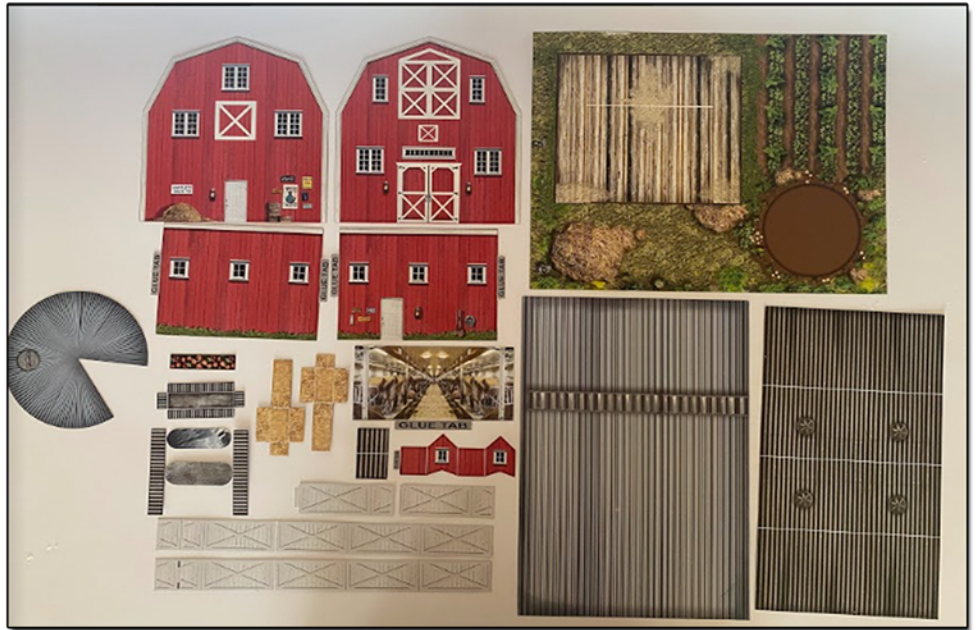
All scale building kits offer many optional features, for a variety of creative ways to complete each project!

Free replacement parts are available
call: 866-712-4059

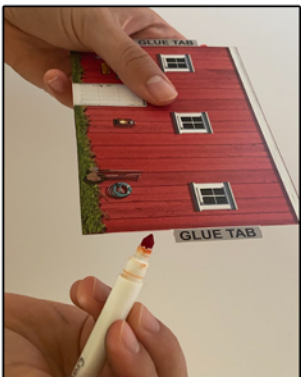


STEP 1 - Collect the correct tools.

For best results, we suggest you gather at least the most basic tools you will need to complete assembly. While you may find more tools that will help you achieve outstanding results, we suggest you start with the following: Hot glue gun, scissors, variety of water based colored markers, tweezers, straight edge rulers, hobby knife, instant setting high strength hobby glue.



STEP 2 - Empty contents of the kit, and carefully cut out all the individual parts to be assembled. Please note that the most precise cuts you can make will result in a dramatically better looking finished project.



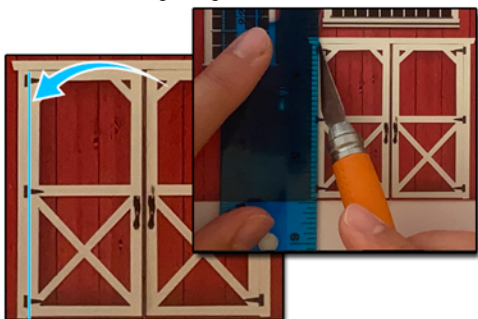
STEP 3 - With appropriate color markers, detail the edges of all the parts you cut out. This will result in a finely finished project once assembled.

STEP 4 - **Scoring.** Using a scoring tool (see picture) and a straight-edge ruler, apply pressure onto the surface of the part you wish to bend, on top of a line you want to fold. This is called scoring. Scoring along lines to be bent makes bending all printed parts easier, and results in a much cleaner looking fold. Bend parts using the length of your straightedge ruler. Scoring is an essential skill.





STEP 5 - With scale building kits, there is usually no correct place to begin. In this case, we'll start by assembling the Inside Barn illusion Wall. First Score and the Glue tab. After scoring, fold it behind the art, so you don't see it in the front when gluing to the base.



STEP 8 - Next, score using a straight edge and a hobby knife, where the blue line is located on the picture shown above. Score the other side of the door as well, just like the left side. We are scoring right on the door hinges, the bottom to almost the top of the door where the hinges stop. use the photo as a reference.



Step 11 - Line up the Front Barn wall evenly with the wood floored base. Make sure your gluing it to the front of the base. Place small amounts of hot glue behind the wall to secure it into place, hold straight/down until dry.



STEP 6 - Now locate the white line on the Barn's Base. Make sure when gluing the illusion wall, that the base is facing the right direction. The front of the base is the part away from the silo brown circle. Place a small amount of hot glue on the glue tab, and glue the wall down a little over the white line on the base, so you don't see the white line in front of it. Like shown in step 5's photo



STEP 9 - After both sides of the door is scored, use a straight edge and a hobby knife to cut the top of the door, so that the door can open. Use the photo above to follow where exactly to cut. Look at the blue dotted line.



Step 12 - Next, glue the correct Barn Side walls to the Front Barn Wall. Score and Fold the Side Wall glue tabs. Place a small amount of hot or white glue to the glue tab. Hold until dry. You can add a small amount of hot glue between/behind the side and Front wall towards the top to really secure the walls together better, like shown in the photo above with the red circle.



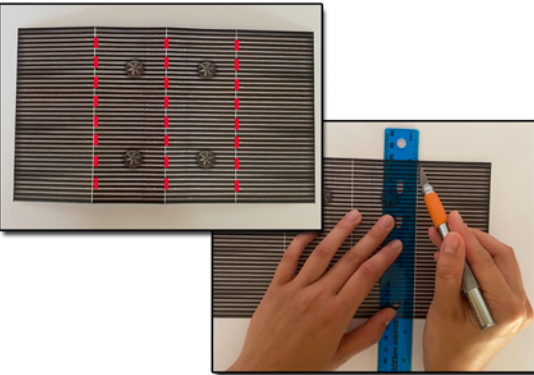
Step 7 - After the Inside Barn illusion wall is glued down on the base. Let's prepare the Front Barn Wall Door. Grab the Front Barn Wall and cut directly in the middle between the double doors, follow the blue line on the photo above as a reference. Don't cut any further than the line shows.



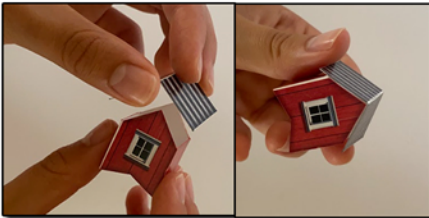
STEP 10 - The Front Barn Door should open just like the photo above after following steps 7 through 9. Now that the Barn Wall is prepared, let's glue it down to the base.



Step 13 - After the correct side walls are glued to the correct side, let's glue the back wall the rest of the building. Use the side wall glue tabs to secure the back wall with the building. Glue one side at a time to the back wall with white or hot glue. Hold until dry completely. Line up the back wall nicely with the base/side walls while gluing.



STEP 14 - Now that the building walls are put together, it's time to assemble the Barn Roof. Score and Fold the white lines located on the Barn Roof. Use a straight edge and a hobby knife to score nicely. Look at the photo above to help you located where to score/-fold. The red dotted lines are where we score and fold.



STEP 17- After grab the Cupola Roof and Score the middle white line, then fold. Place on top of the Cupola building, glue on top with small amount of hot glue.



STEP 20- Now grab the Silo wall, and a can. Use the can to wrap the Silo wall on to. This is going to help get the perfect circle shape we need for the silo.



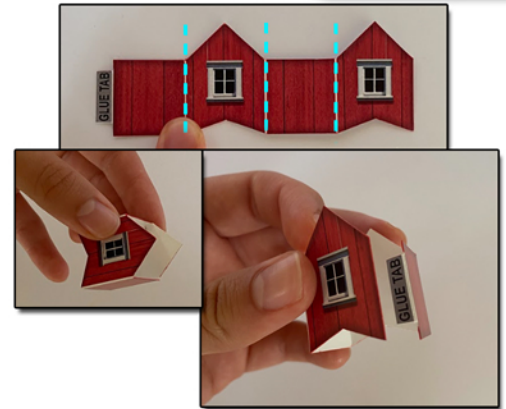
STEP 15 - Place the Roof on nicely and evenly after scoring and folding. Glue one section of the Barn Roof one at a time with hot or white glue.



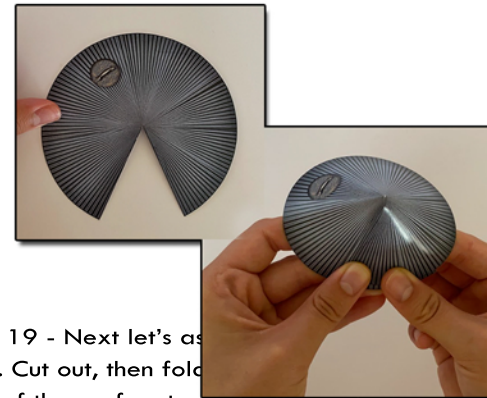
STEP 18 - Place the completed Cupola on the middle of the Barn Roof like shown above. Place a small amount of hot glue around the inside of the cupola to secure it on the roof. Hold until dry.



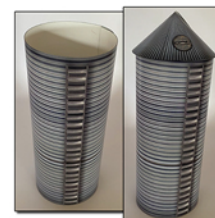
STEP 21 - When wrapping the Silo wall on to the can, overlap an inch of the wall on to each other to connect. Then when gluing, I recommend using hot glue. Before hot gluing together, line up the wall nicely so it's even all around. Then place small amounts of hot glue on the end while lined up, hold until dry. Slowly glue the whole thing going up the silo wall.



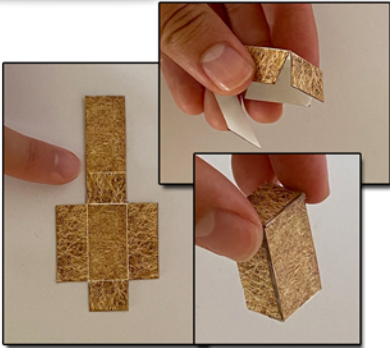
STEP 16 - Next grab the Cupola, Score and Fold the white lines on the Cupola. Use the photo above as reference where to score (Dotted Blue Lines). Then use the glue tab to secure together.



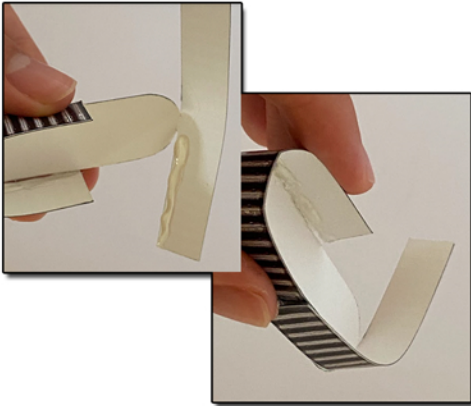
STEP 19 - Next let's assemble the Silo Roof. Cut out, then fold each part of the roof on to each other just enough to cover up the open section on the roof like shown above. Secure with hot glue, hold until dry. Then put aside.



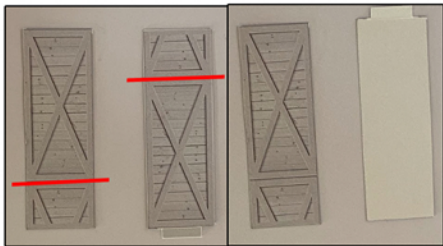
STEP 22 - After the Silo is secured, take the silo off the can gently. Then glue on the Silo Roof we assembled earlier, on to the Silo building. Place small ring of hot glue around the inside of the silo roof to secure it on top of the silo building. Press down gently and hold until dry.



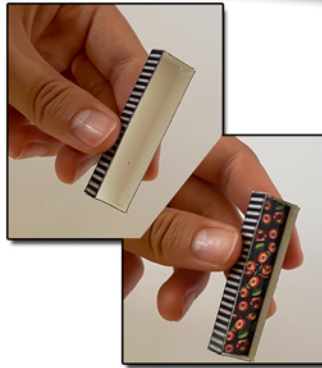
STEP 23 - Now that the barn and Silo are put together, It's time to assemble the add ons. Cut out the Hay, Score and Fold the white lines. Glue together with hot glue. Should look like the photo above after assembled.



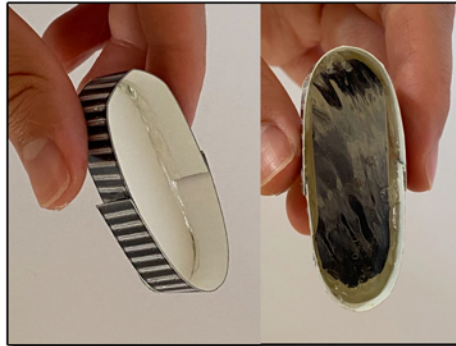
STEP 26 - To glue the walls of the water bucket on, wrap one at a time. Place a small strand of hot glue of the inside (the white part). Wrap carefully while lining up the tab with the base like shown above.



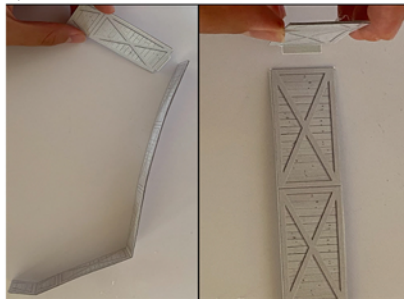
STEP 29 - Repeat Step 28 for the smaller pieces of the fences. Expect the only thing different is for the inside left side fence you need to score and the fold small gray tab inwards. This is going to connect the big fence section with this small fence section. Also score and Fold the line shown above (red line).



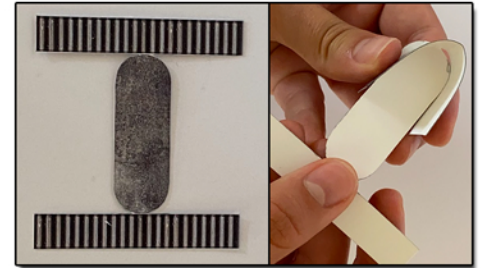
STEP 24 - Grab the Food Bucket, Score and fold the white lines on the bucket. Glue together by placing hot glue of the inside corners of the bucket while folding. Next grab the Top of Food Bucket, place hot glue inside of the bucket on both sides. While placing the glue middle half down of the bucket so the apples are slightly in the bucket rather than directly on top like the photo above.



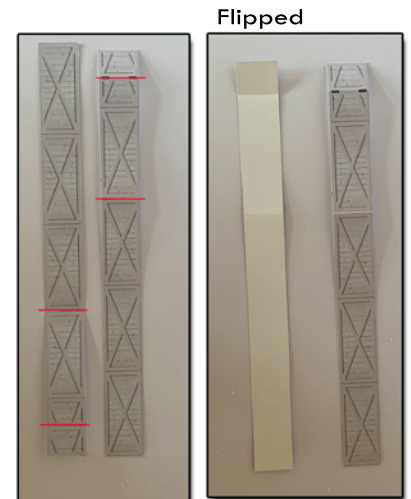
STEP 27- After the Water Bucket is assembled repeat step 24 to place the Top of Water Bucket on. Then for this next part it's optional. You can add a small layer of clear hot glue on top of the water to make it look even more realistic/3D.



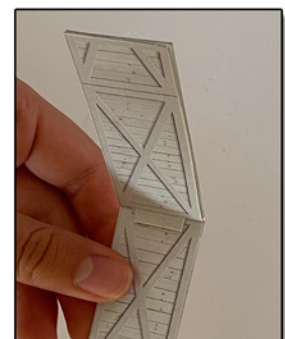
STEP 30 - After both sections of the fence is made, connect the small fence section on to the large side. Glue the end of the fence from the inside that has 3 large rectangles. (Left side or the opposite side of the fence's door). Use a small amount of hot glue to connect them together.

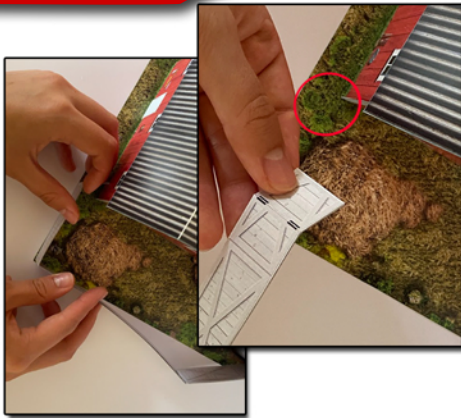


STEP 25 - Now grab the Water Bucket, fold the two long tabs upward around the bottom oval base. Like shown above. Fold one wall tab of the Water Bucket one at a time.



STEP 28 - Let's assemble the Barn's Fence. Grab the longer outside and Inside fences. Score and Fold on the lines shown above (Red Lines). Flip the inside fence, before gluing both on to each other. Make sure when they are together, they are symmetrical from each other from the back and the front. (Folded parts are lined up) When gluing place small amounts of white or hot glue on to the bland white side of the flipped fence. Avoid putting glue on the scored white lines.





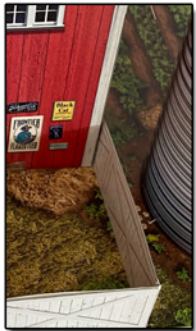
STEP 31 - Now after the fence is together, we're going to glue the right side of the fence first, where the hay is on the base. The little space gap between the right side of the barn and the base is where the fence door is going to be (red circle is), don't glue that part. Just glue the side of the fence like shown above. Line up the base and the fence together when gluing carefully/evenly. Glue with hot glue, place the glue along the bottom of the fence section at a time.



STEP 32 - Next glue the large piece of the fence along the end of the base like shown above. Use the same glue technique in Step 31.



STEP 33 - Now for the left side of the fence place a small amount of hot glue on the part like shown above in the photo. Then glue against the barn wall.



STEP 34 - Then after the fence is complete, you can place any of the add ons we built earlier inside the fence or anywhere along the barn.



STEP 35 - Finally cut out the optional roof vents, place them on the original roof vents located on top of the roof. Place a small amount of hot glue. Adds a nice 3D affect.

Go to the next page to see the final results.



ASSEMBLY INSTRUCTIONS

Photo Real Scale Building Kit by

INNOVATIVE
HOBBY SUPPLY

**Old Red
Barn**



Front of Building



Left Side of Building



Right Side of Building



Rear of Building