



ASSEMBLY INSTRUCTIONS

Photo Real Scale Building Kit by



Farm and Feed Co-op



- A new alternative to plastic form scale building models!
- Photo Real Scale Building kits may be the most realistic kits available!
- Great for use on model dioramas, slot car, and train track layouts!
- Designed using photos of real building elements for the most realistic appearance

Footprint Dimensions

Model Base
8" x 11"

Feed and Farm Co-op
5" x 9"

All scale building kits offer many optional features, for a variety of creative ways to complete each project!

Free replacement parts are available
call: 866-712-4059

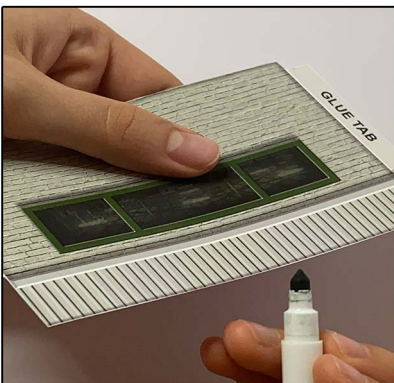


STEP 1 - Collect the correct tools.

For best results, we suggest you gather at least the most basic tools you will need to complete assembly. While you may find more tools that will help you achieve outstanding results, we suggest you start with the following: Hot glue gun, scissors, variety of water based colored markers, tweezers, straight edge rulers, hobby knife, instant setting high strength hobby glue.

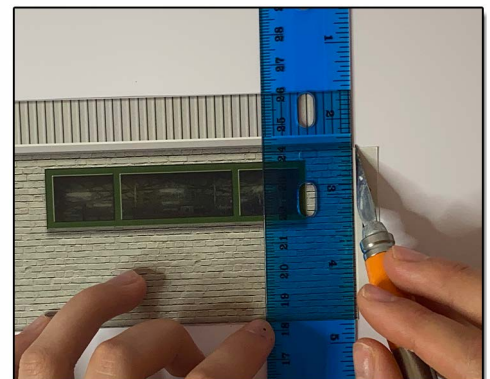


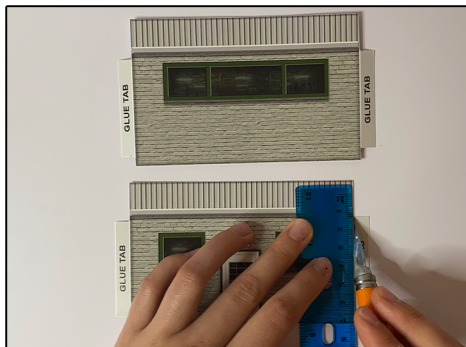
STEP 2 - Empty contents of the kit, and carefully cut out all the individual parts to be assembled. Please note that the most precise cuts you can make will result in a dramatically better looking finished project.



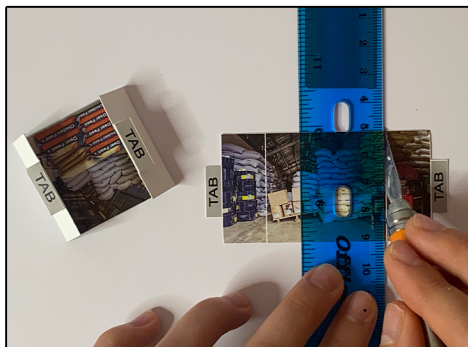
STEP 3 - With appropriate color markers, detail the edges of all the parts you cut out. This will result in a finely finished project once assembled.

STEP 4 - **Scoring.** Using a scoring tool (see picture) and a straight-edge ruler, apply pressure onto the surface of the part you wish to bend, on top of a line you want to fold. This is called scoring. Scoring along lines to be bent makes bending all printed parts easier, and results in a much cleaner looking fold. Bend parts using the length of your straightedge ruler. Scoring is an essential skill.





STEP 5 - With scale building kits, there is usually no correct place to begin. In this case, we'll start by scoring the Feed and Farm Co-op side walls and Illusion Rooms. Carefully Score the Glue tabs with a straight edge. And For the Illusion Rooms score the two white lines. Like shown above.



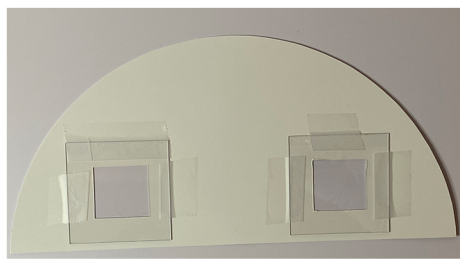
STEP 6 - When scoring the Illusion Rooms make sure to use a straight edge. After Scoring carefully fold the 'side walls' of the Illusion Room inward. Then score the tabs on the illusion rooms outward. Like shown above. For the next step lets start preparing the front wall and windows!



Step 7 - If you want the building to look 10X more realistic I recommend adding on the Optional 3D Front Round Wall, and the glass windows. Let's start with the windows. Grab the Optional 3D Front Round Wall and carefully cut out the inside of the two side windows with a X-Acto Knife, avoid cutting the white window frames.



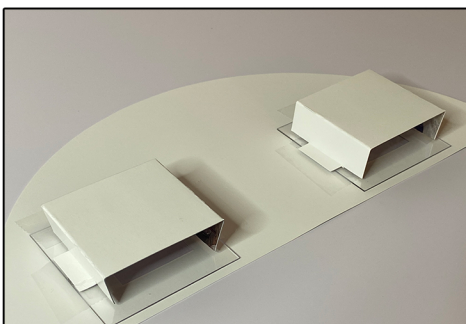
STEP 8 - After your done cutting the inside of the windows, but leaving the white frames, it should look like this. You can toss the inside of the windows you cut out. Before we go any further with the windows, I recommend putting on plastic gloves before touching the glass, to avoid finger prints.



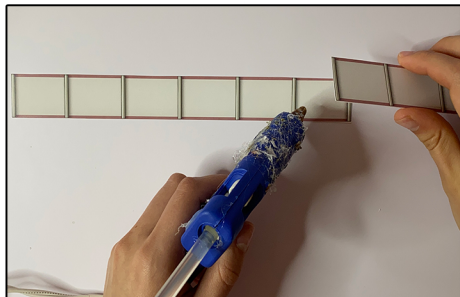
STEP 9 - After cutting out part of the windows, grab the piece of plastic glass included in the kit. Carefully take off white wrapper on both sides of the glass until you can see through. Place the glass evenly behind the front wall windows. Place clear tape around the glass evenly to secure in place. Make sure you place the tape only on the edges. repeat with other window.



STEP 10 - Face the illusion rooms down on to the glass, make sure its covering the window evenly, place one small glob of glue on to the tab on each side, then place on top of the tape glass behind the Optional Front Round Wall.



Step 11 - After assembling the illusion Rooms it should look something like this. IF you flip it to the front, you can see through the windows.



Step 12 - Cut out the two Round Wall Separators. With a small amount of hot glue, place glue on one of the wall square ends, place the other wall separator on top of the other wall to make one long wall all together. When gluing together make sure to line up the metal bars on the walls to look like it connecting.



Step 13 - Grab the Optional Round Front Wall we assembled the illusion room on, lay it on a flat surface so the back is facing you. Grab the Long Wall separator. Line up the ends of the wall separator and the Round wall together. Place a small glob of hot glue between them to connect the ends together. Hold on the two until glue dries. Gradually add more hot glue to connect the wall separator all along the round wall. To get a better understanding look at the image above.



STEP 14 - After Gluing the wall separator all along the Round wall, extra wall separator will hang below, cut the extra wall off straightly. The Final results of the Optional 3D Round Front wall should look like this.



STEP 15 - Now lets start to assemble the buildings walls. Cut out the Front, back wall. Glue the front wall, make sure before gluing, the wall is facing the sidewalk. Line up the Front wall with the gray base on the parking lot. Place one small amount of hot glue behind the wall on each side, left and right, to secure it in place.



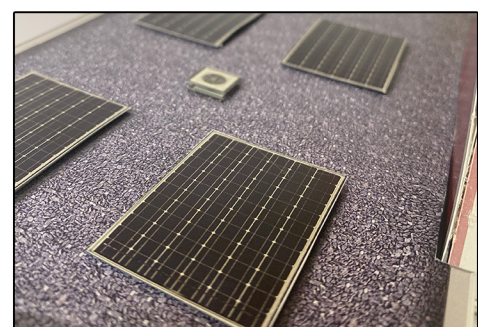
STEP 16 - Glue the correct side walls to the correct sides. Then Glue the back wall on to the side wall tabs, you can always add a small amount of hot glue behind the walls to give it extra strength. After you have all the walls together, it should look like this.



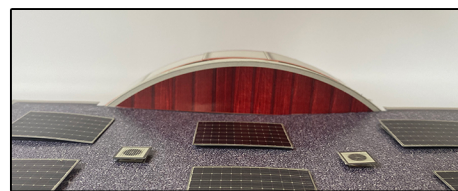
STEP 17 - Now glue the Optional 3D Round Front Wall we assembled on to the flat surface of the replica art on the front wall connected to the actual building. You can use white glue or hot glue. Before gluing I recommend to line it up evenly before and just add glue behind it slowly connecting it in some areas.



STEP 18 - Place the Roof on top of the building, the indented part connects to the front of the building.



STEP 19 -Then you can add on the optional add ons included in the building kit, theres optional solar panels, roof vents, lights, and a Feed and Farm Co-op Sign. By adding hot glue to the back, it gives the objects a 3D affect when applied to the building.



STEP 20 - To cover the white part of the back of the round wall add the Round Wall Back Side, use white glue when applying.

Go to the next page to see the Final Results



ASSEMBLY INSTRUCTIONS

Photo Real Scale Building Kit by

INNOVATIVE
HOBBY SUPPLY

**Feed and
Farm Co-op**



Front of Building



Left Side of Building



Right Side of Building



Rear of Building