



REAL LANDMARK EDITION

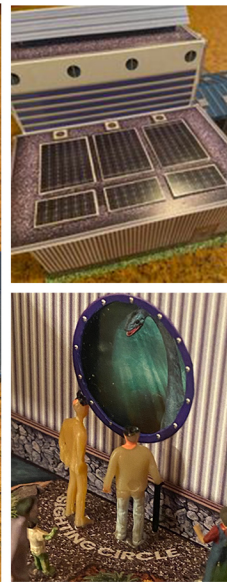
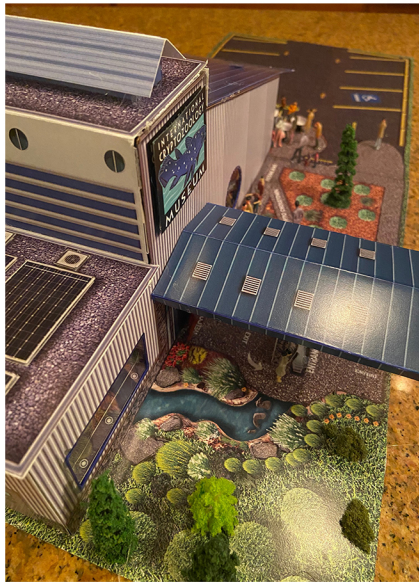
ASSEMBLY INSTRUCTIONS

Photo Real Scale Building Kit by **INNOVATIVE**
HOBBY SUPPLY

Future Home of
The International
Cryptozoology
Museum
Instructions.
Page 1

Build it Easy Or Advanced - As You Go

- A new alternative to unpainted plastic building models.
- Photo Real Scale Building kits may be the most realistic kits available!
- Great for use on model dioramas, slot car, and train track layouts or Shelf.
- Designed using photos of real building elements for the most realistic appearance appearance possible.



Footprint Dimensions

Model Base

8" x 22" or 8"x 14"

International Cryptozoology
Museum

5" x 10"

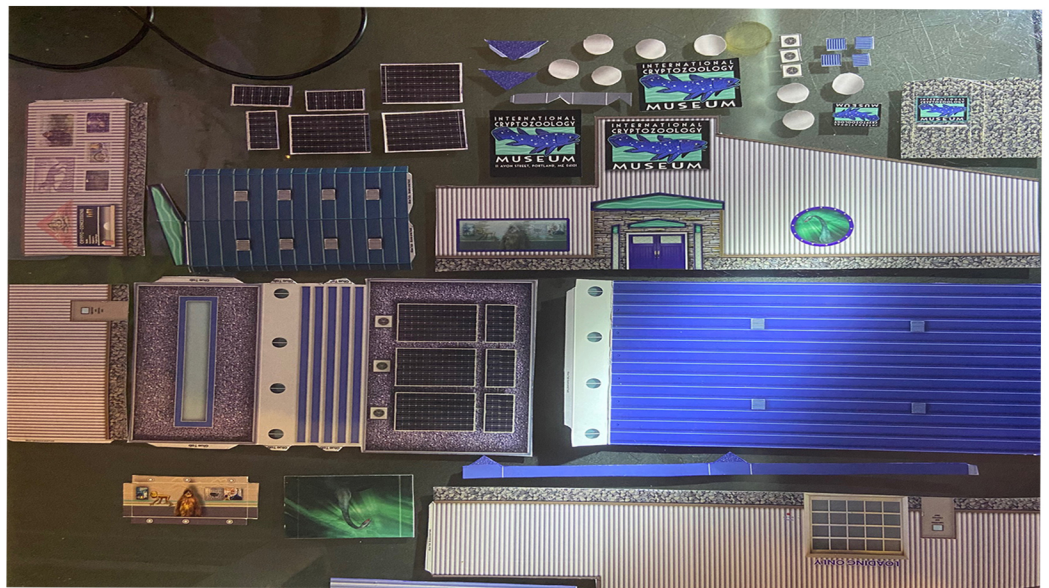
*All scale building kits
offer many optional
features, for a variety
of creative ways to
complete each project!*

Free replacement
parts are available
call: 866-712-4059



STEP 1 - Collect the correct tools.

For best results, we suggest you gather at least the most basic tools you will need to complete assembly. While you may find more tools that will help you achieve outstanding results, we suggest you start with the following: **Hot glue gun and 5 glue sticks, Scissors, Water based colored markers- Grey-Brown-Blue, Tweezers, Straight edge ruler, Exacto hobby knife and a new blade, White Glue, Scotch Brand Tape, Cutting Mat or Stone or Glass cutting board.**

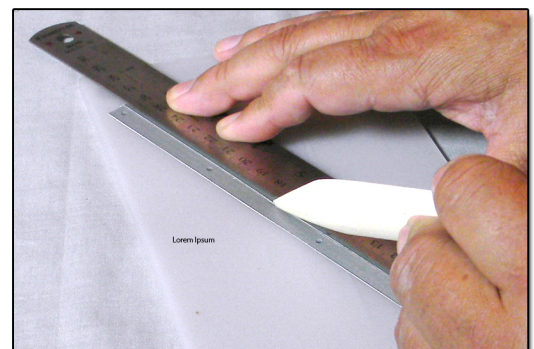


STEP 2 - Empty contents of the kit, and carefully cut out all the individual parts to be assembled. Please note that the most precise cuts you can make will result in a dramatically better looking finished project. Scoring and folding all parts is next step as shown below. Opening Doors and real windows Installation for the Nessie aquarium and Loren's Picture window are only optional for cool real look, but you must decide now! It takes a bit of patience and skill but the results can be worth it... Dont rush, take your time. Adding real windows will add 15 min assembly time is all.

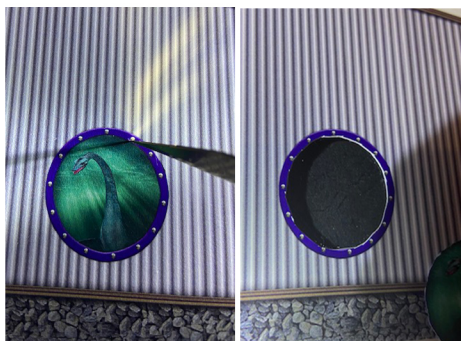
STEP 4 - Scoring. Using a scoring tool (see picture) and a straight-edge ruler, apply pressure onto the surface of the part you wish to bend, on top of a line you want to fold. This is called scoring. Scoring along lines to be bent makes bending all printed parts precise, and results in a much cleaner looking fold. Bend parts using the length of your straightedge ruler or desk edge. **Scoring is an essential skill. Practice on Scrap**



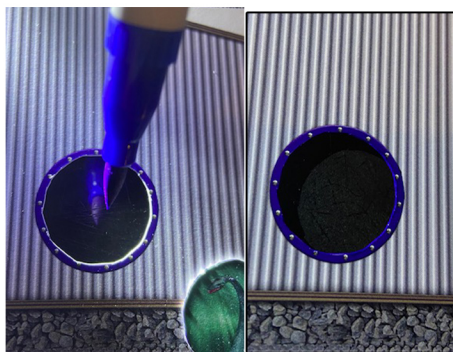
STEP 3 - With appropriate Watercol- or markers, detail the edges of all the parts you cut out. This will result in a finely finished project once assembled. **TIP: Keep the marker moving or too much ink will seep in.**



Dont Rush - Take Your Time - Read Every Step To Avoid Mistakes



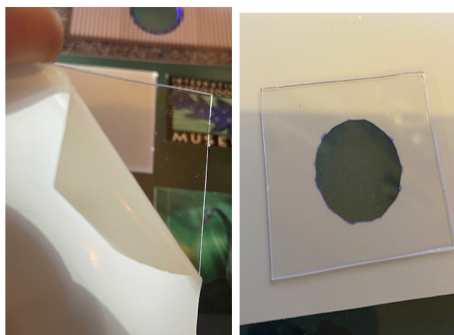
STEP 5- Front wall. If you want real glass look and have hobby cutting knife skills, then carefully remove the round porthole. Use a brand new blade and a smooth cutting mat or glass. Start by cutting a shallow groove, Work your way around untill it is cut through entirely. do not tear it out or damage will occur.



STEP 6-Touch up the inner edge surface with a small piece of sandpaper round-ed file if needed. Next, with a blue watercolor marker to get rid of the white cardstock edge. This adds much greater realism. You are now ready to add the glass to the backside after step 7



Step 7-Repeat step 5 for the big front window, a straight edge can be used to aid in cutting. Dont forget to Touch up inner edges on this window. Tip: do not hold the watercolor marker on the edge or ink will be sucked in, do it swiftly.



STEP 8 - Now grab the 2 glass pieces. The small one is for the Nessie port hole and the Larger piece is for the the rectangle, peel off the protective cover. Hold by the edges to avoid fingerprints. Test fit both pieces on the backside before attaching. The glass must over lap as shown.



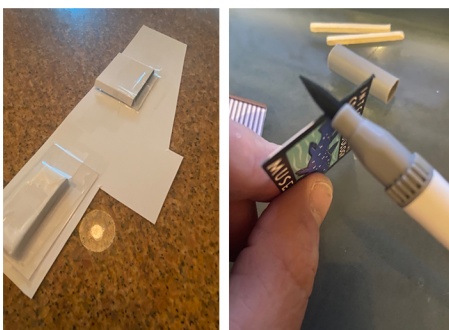
STEP 9 - Next test fit rectangle window also and tape in place on the edge of both glass pieces using Scotch Tape. Next start prepping Illusion Nessie tank and rectangle window illusion room by scoring and Folding Both flaps upward on a desk edge.



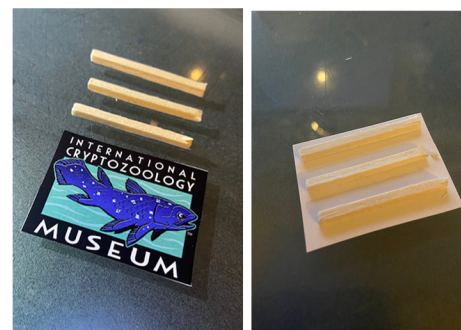
STEP 10 - Score and fold the the 4 flaps of the rectangle window as shown above. Peel the paper off the glass. Test fit the rectangle window from the back white side up. Tape the centered glass so the glass shows on the front and is free of fingerprints or tape.



Step 11- Install the illusion backgrounds so they are centered in front of the windows so they look good from the front. TIP: you can tape the illusion rooms in-place before using hot glue as a reinforcement. The second photo shows what theyu look like when installed correctly.



Step 12-Reinforce the back side so it will not come apart. Use plenty of tape and or hot glue or both. Stay clear of bottom edge as that surface will be glued to the foundation. Prep the Big sign and spacers to make it bump out for a realistic look. Marker the edges.



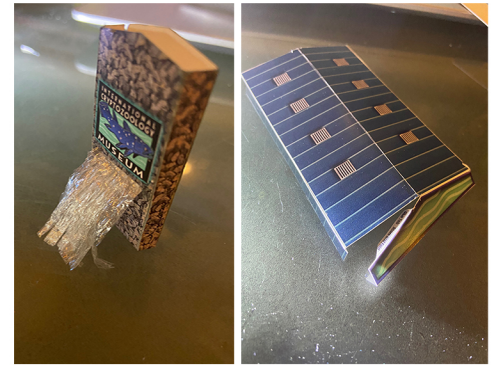
Step 13-Cut the Match sticks so they are a 3/8" shorter on both sides, so they wont show after installation on to the building. Attatch with hot glue as shown. and carefully glue the sign exactly over the printed sign on the front of the building for an amazing 3D look. See next page



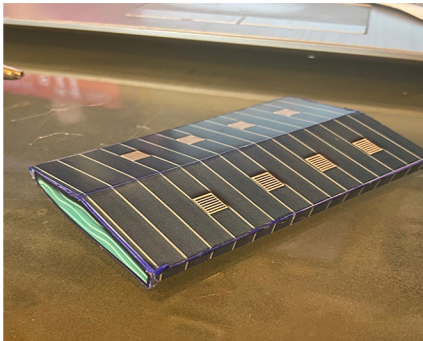
STEP 14 - The front is now complete and will look like the photo above. If you skipped these optional 3D steps your model will still look great, don't worry. Next step is to assemble the brick waterfall and the entrance awning. Also find the piece of standard stretch cling wrap included to duplicate the water.



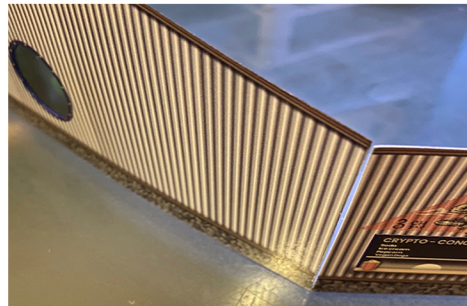
STEP 15 - Score and fold Waterfall Brick Pillar as shown. Cut out the white rectangle area for the water opening. Use your grey marker to touch up the inside edges. Create the water by folding the plastic wrap 1 inch wide and then stretching the plastic to give it lines to look like water. Insert in slot and cut to length and glue on backside.



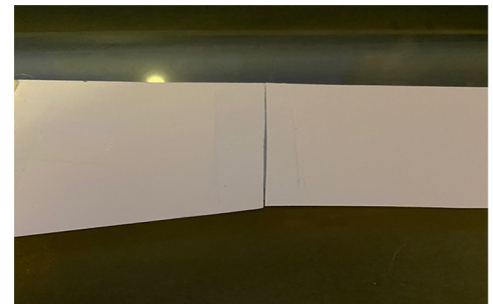
STEP 16 - Glue the waterfall together and touch up folded edges with a light grey marker. Score with a straight edge the entrance awning and fold as shown above. Glue it together from underneath so the hot glue does not show. Just tack it together in spots and hold in place until glue cools.



STEP 17 - The finished awning will look like this above photo. You can now add the smaller 3D sign onto the waterfall by adding 5 even spaced drops of hot glue to the backside so it will bump out a bit. The awning and the support waterfall will go on last so set these aside in a safe place.



STEP 18 - If the wall edges are prepped we can start to glue these down one wall at a time so the corners match up. Follow these helpful easy steps. **A)** Get 2 ea. 1/2" pieces of magic tape ready. **B)** Take the front wall and the concession wall and stand them up on a flat desk (make sure the concession window is on the bottom side.) **C)** Next line the corners up carefully and take the magic tape and use it to hold the walls together aligned. See below



STEP 19 - A) Carefully line up corner of the front wall with wall edge on the base and sidewalk on the base with the front door and tack down with small pieces of tape from the inside only. Make sure the wall has a bit of tension on it as you go to prevent wall curving. Front wall first then side wall. When they are taped in place and you have double checked alignments to sidewalks with doors etc., you may reinforce with hot glue on the inside of building only. **B)** Repeat this procedure on the left side and the back wall. Make sure the corners are lined up. Use the tape just to hold things in place for perfect installation and straight walls and corners. **TIP:** once you have stood walls up and tacked them together so bottom is flush you may open them up flat and add a piece of tape to the inside for reinforcement to help hold it all together before installing to base with tape and hot glue.

Always take your time to plan and test fit parts. With a little patience your model will look fantastic!

Before you connect them at the corner-stand up the first two walls to make sure the bottom edges are flush





ASSEMBLY INSTRUCTIONS

Photo Real Scale Building Kit by **INNOVATIVE**
HOBBY SUPPLY

Future Home of
The International
Cryptozoology
Museum
Instructions.
Page 4

Minature Buildings Just Look Cool!

Dont Rush - Take Your Time - Read Every Step To Avoid Mistakes



STEP 20- The walls are up so we can install the front awning with the waterfall support below it. Hot glue the awning on to the wall first. Then lift a inch or two to install the water fall in the correct place marked on the base. Glue the bottom first to the base, then lift the awning just enough to add a bit of hot glue to the top of the peak of the support and press and hold until the glue cools.



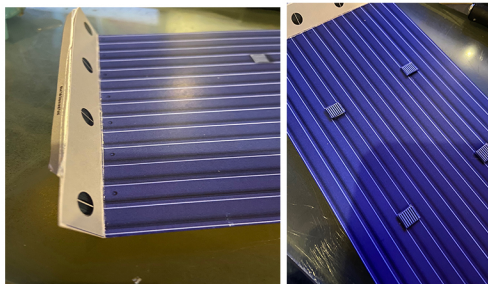
STEP 21- We will now glue the water down. You want to get the water to go down the printed drain. Using hot long showing glue flows will actually make your water look more real as it splashes up and foams up before it goes down the drain on the base. Use this photo as your guide. No two waterfalls will look identical, use your own artistic talents.



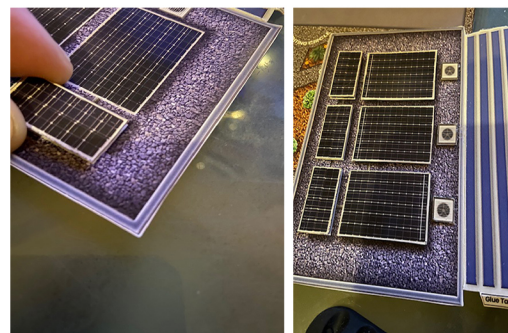
STEP 22- You must hot glue the parking lot as shown. The parking lot goes under the building base about 1/2" if you want a smaller footprint and no parking lot you can cut off most of it as shown in the 2nd photo. Line it up, hold it in place, and tape it from the bottom to keep it lined up perfect as you hot glue it by bending it to open up the hidden area you can place a bead of glue.



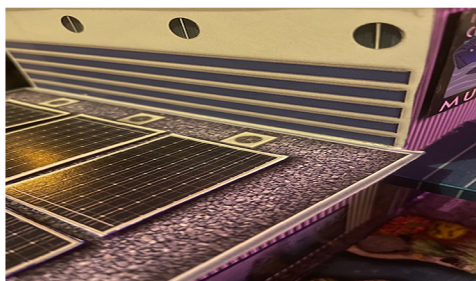
STEP 23- Prep the concession tables before we put the roof and roof details on. Pick 7 table tops and find the Black straw and cut 1/2" sections off as straight as possible. Some tables can be shorter- different table heights can also be cool looking. Install at least 7 tables. See finished table area as a guide.



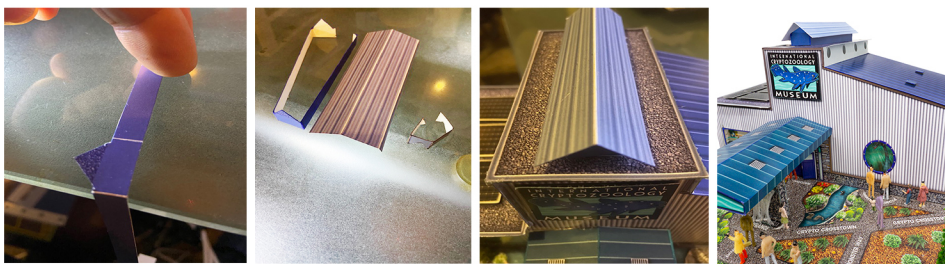
STEP 24 - Next we will prep the big blue roof for install. Use a straight edge and score and fold white roof area up to a 90degree angle. Add the optional 3D roof vents by using hot glue and a tweezers to install. If you use the small roof vents make sure you use your blue marker to color the white edges on the vents.



STEP 25 - Next is prepping the left side roof by scoring the side with the Blue lines that will fold up (use a sharp desk edge after scoring. Add the 3D solar panels over the printed ones using hot glue. Add the small roof vents. Looks like the right side Picture when complete.



Step 26 - now install the left side roof as shown. Test fit to make sure you are familiar with how it will go on. TIP: if you feel you dont need the glue tabs you may cut them off for a cleaner install. Just sneek a bit of hot glue where the joints are , press in place. TIP: Use the hot tip to smooth out joints if needed. test fit and glue on the right side Blue roof next.



Step 27 - Glue on the top flat part of the roof and then assemble the dark blue base by scoring it , folding it and glueing it together. This part will hold the roof peak. Next glue the base on the top of the roof. Then score and fold the light blue roof peak so the angle matches the roof peak base. Test fit it and then glue it in-place. Next: Score, fold and assemble the grey chimney and install it. Add Landscaping moss and people where you want. Use a bit of hot glue to attach these additions. You are now ready to enjoy your very own International Cryptozoology Museum. You can buy trees and more people at your local hobby shop. Add small hot wheel cars in the parking lot if you would like... Enjoy!