



# ASSEMBLY INSTRUCTIONS

Photo Real Scale Building Kit by **INNOVATIVE** HOBBY SUPPLY

BK 4836, BK 6436

**Bigfoot  
Museum**

- A new alternative to plastic form scale building models!
- Photo Real Scale Building kits may be the most realistic kits available!
- Great for use on model dioramas, slot car, and train track layouts!
- Designed using photos of real building elements for the most realistic appearance



## Footprint Dimensions

Model Base  
8-1/2" x 11"

Bigfoot Museum  
5-3/4" x 5-3/4"

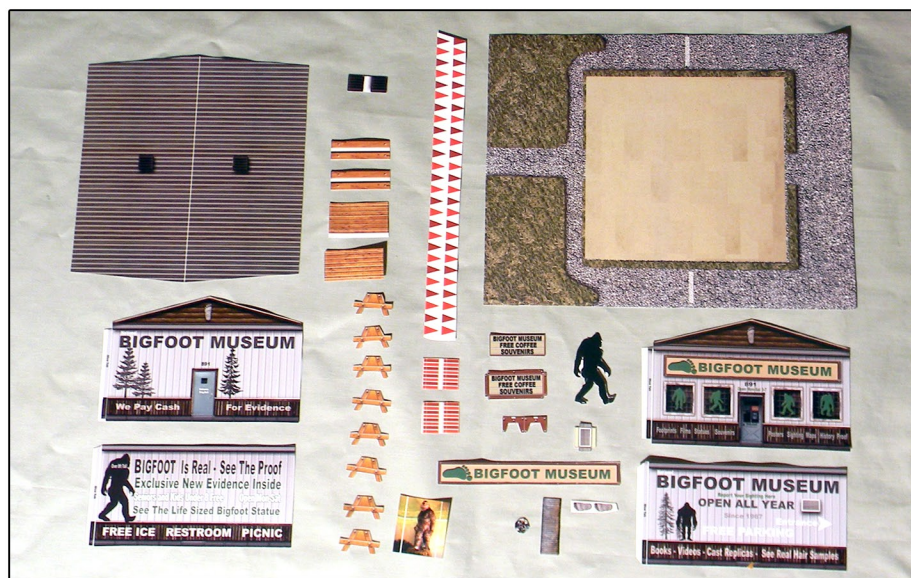
*Bigfoot Museum  
Is one of many  
Photo Real scale  
building kits from  
Innovative Hobby Supply*

Free replacement  
parts are available  
call: 866-712-4059



## STEP 1 - Collect the correct tools.

For best results, we suggest you gather at least the most basic tools you will need to complete assembly. While you may find more tools that will help you achieve outstanding results, we suggest you start with the following: Hot glue gun, scissors, variety of water based colored markers, tweezers, straight edge rulers, hobby knife, instant setting high strength hobby glue.



STEP 2 - Empty contents of the kit, and carefully cut out all the individual parts to be assembled. Please note that the most precise cuts you can make will result in a dramatically better looking finished project.



STEP 3 - With appropriate color markers, detail the edges of all the parts you cut out. This will result in a finely finished project once assembled.

STEP 4 - Scoring. Using a sharp hobby knife (or scoring tool) and a straight-edge ruler, make a light shallow cut into the surface of the part you wish to bend. Do not cut all the way through. This is called scoring. Scoring along lines to be bent makes bending all printed parts easier. Bend parts using the length of your straight-edge ruler. Scoring is an essential skill.







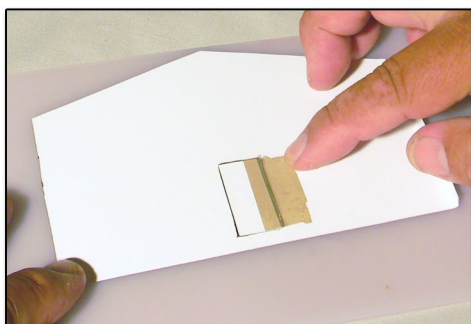
**STEP 5** - Score the folding-tab line of each building wall. This prepares it to be folded, and results in a very clean well defined folded line. Each wall of the Bigfoot Museum building has one of these tabs used to join walls together.



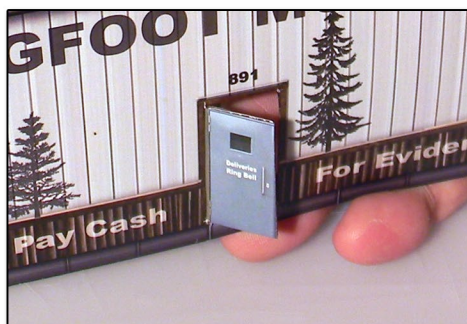
**STEP 6** - Using a straight edge, begin to fold the wall joining tab. Start to bend along this line lightly, and work back and forth along this line, ending with a firm, sharp, crisp fold. Suggest practicing on scrap material first.



**Step 7** - If you want real, working doors, use a razor knife and a straight edge to cut out the door from the wall of the building. Take your time and make the most precise cuts possible. Don't forget to use color markers to color the edge of the door and wall.



**STEP 8** - Next, place the door that was cut out, face down in the doorway, and use some tape to attach the door to one side of the door frame as depicted here.



**STEP 9** - Each working door, once complete, should look something like this. You may have to cut a little extra material from the door to prevent binding when closing/opening the door. Working doors allow you to see details inside the building.



**STEP 10** - White hobby glue works well for joining the walls of the building to each other. Apply a modest amount of glue to the bent tabs, and carefully join one wall to another. Hold together for about 1-minute, then release.



**Step 11** - Begin by joining the front wall to a side wall, as depicted here.

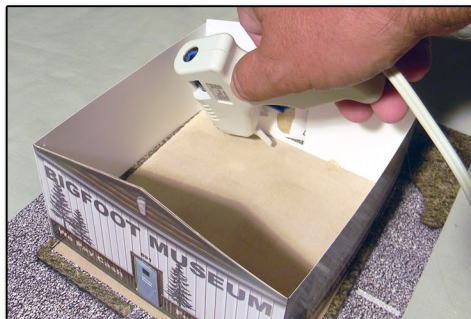


**Step 12** - Next, join the side wall to the rear wall of the building.



**Step 13** - Join the final wall to the front wall of the building.

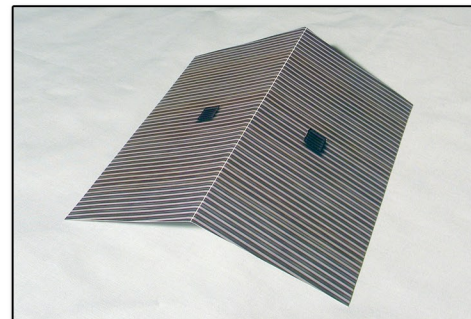




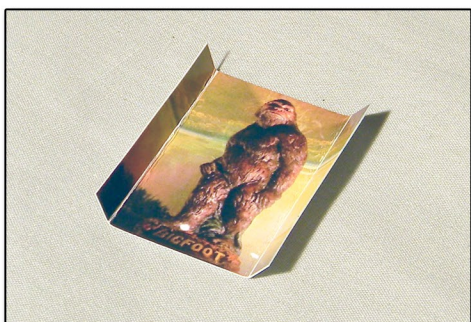
STEP 14 - Line the front of the building wall up with the cement floor line at the front of the building. Next, use a hot glue gun to place one drop of hot glue at the base of the front wall thereby joining the front wall of the building to the base. Hold briefly until glue cools.



STEP 15 - Continue with hot glue all around the base of the building with hot glue until the building is firmly secured to its base. Take your time as you do this because it's close to impossible to reposition building once hot glue cools.



Step 16 - Score and fold the roof of the Bigfoot Museum building as shown here. Use a large straightedge to create the fold line.



STEP 17 - Score and fold the edges of the "Bigfoot Illusion Room" as shown here. This will be placed just inside the front door, so you can see this display when you open the front door!



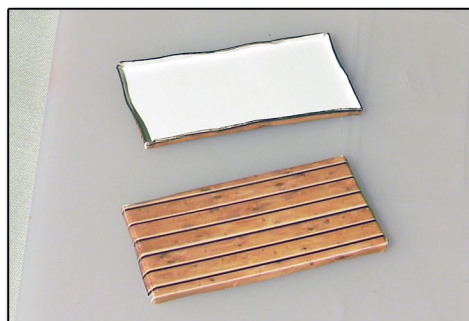
STEP 18 - Place drops of hot glue on the backside of the "Bigfoot Illusion Room" at its base and hold in place until the glue firms up.



STEP 19 - Using some small drops of hot glue applied to the top/inside of the front and back walls, adhere the roof of the building to the walls of the building. Use hot glue to secure optional roof vents as well, if you so choose.



Step 20 - With white hobby glue, join picnic table supports together - front and back so they're the same on both sides

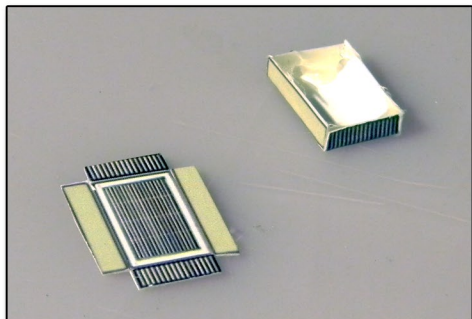


Step 21 - Score and fold the edges of the picnic table tops as shown here. Add a few drops of hot glue to lock edges.

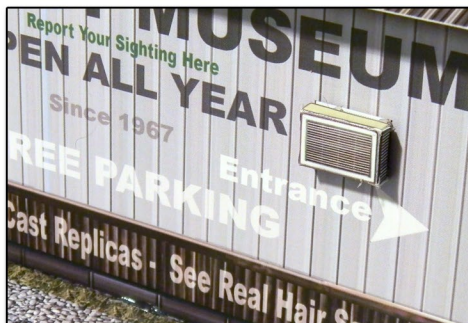


Step 22 - Join the picnic table tops to the base supports with glue, like this.





STEP 23 - Score and fold the edges of the 3-D Photo Real wall air-conditioning unit. Once folded, lock the backside edges in place with drops of hot glue. Hold until the glue cools, then release.



STEP 24 - Adhere the air-conditioning unit to the wall of the building using a large drop of hot glue. Place a larger drop of hot glue inside the A/C unit, and place in the marked space on the wall. Use caution - the glue is very hot. Hold in place on wall until it cools.



Step 25 - Optional window awnings can add another element of realism. To apply, place a drop of hot glue at the top of the awning on its underside. Quickly, but carefully place the awning where it should go. Hold in place until glue cools.



STEP 26 - Score and fold both of the billboard sign supports. Once they are folded, apply white hobby glue on the inside, and hold until glue dries.



STEP 27 - Using the same techniques as outlined in Step-23 above, score and fold all four edges of the billboard sign and lock the edges in place with hot glue. Next, glue the other side of the billboard sign onto the first piece.



STEP 28 - Mount the completed sign on top of the sign supports using white hobby glue. The finished sign should look like this, as shown above.



Step 29 - Using a pencil, form trash can body into a rolled form, then use some white hobby glue to hold in place.



Step 30 - Place a drop of hot glue inside the trash can. Place the top on it, and hold until the hot glue cools.



Step 31 - Place black bigfoot silhouette, picnic tables and billboard on the base.





# ASSEMBLY INSTRUCTIONS

Photo Real Scale Building Kit by **INNOVATIVE**  
HOBBY SUPPLY

BK 4836, BK 6436

**Bigfoot  
Museum**



Front side view of Bigfoot Museum building



Left side of building



Rear side of finished building



Right side of finished building