



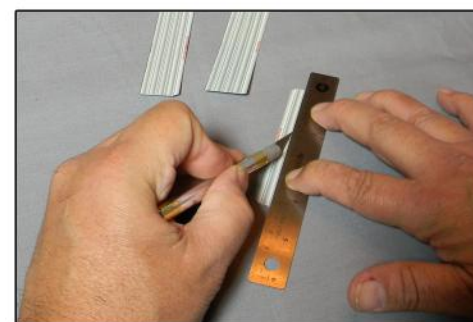
1/64 Scale

-

**Free replacement
parts are available
call: 866-712-4059**



STEP 4 - Scoring. With the use of your sharp hobby knife and a straight edge ruler, make a light shallow cut into the surface of your part you wish to bend. Do not cut all the way through. This is called scoring. Scoring along lines to be bent, makes bending all printed parts easier, and results in a much cleaner, finished look.





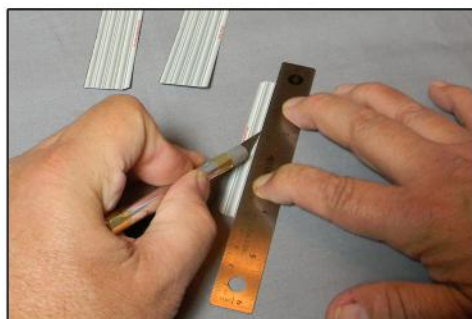
ASSEMBLY INSTRUCTIONS

Photo Real Scale Building Kit by

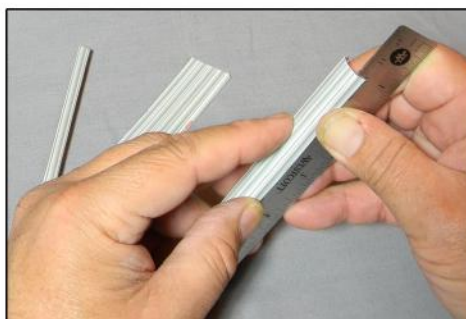
INNOVATIVE
HOBBY SUPPLY

BK 6431
Modern
Bleachers

1/64 Scale



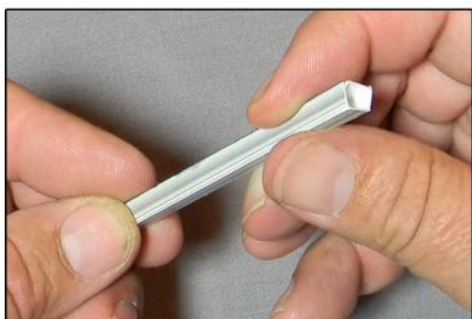
STEP 5 - Support pillars of the bleachers roof need to be scored lightly along the lines / edges to be bent. Line up your straight-edge along the bend lines, and run your hobby knife down that line using light pressure.



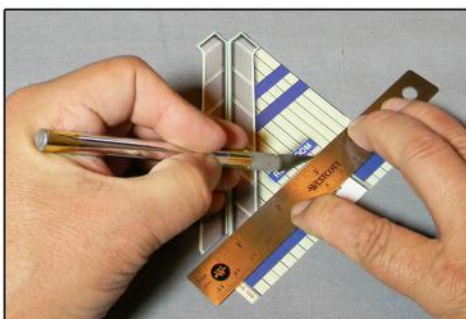
STEP 6 - Bend the roof support pillars along all scored / bend lines. For best results you should **bend along all your cut lines using a thicker metal straight edge ruler or sharp 90-degree edge of a surface such as the top of a desk.**



STEP 7 - Lock in the bent angle you just made by applying some drops, or a long bead of hot glue along the bent angle. Recommend you do this with every bend you make. Hot glue adds strength and rigidity. Hold the pillars in the exact angle you want until glue cools off.



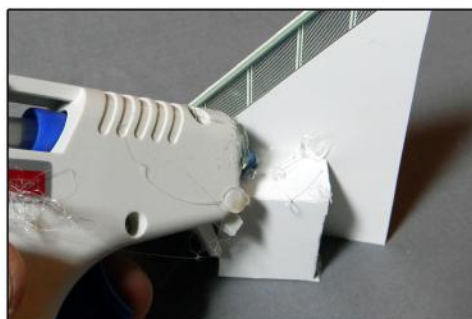
STEP 8 - Hold all the sides / angles of the roof support pillars together until the hot glue inside cools, then seal the finished last edge with quick setting hobby glue to give a clean finished look to the roof support pillar edge.



STEP 9 - Cut the restroom entryway areas out using a sharp hobby knife and score/fold/glue the railing at the top of each bleacher building end.



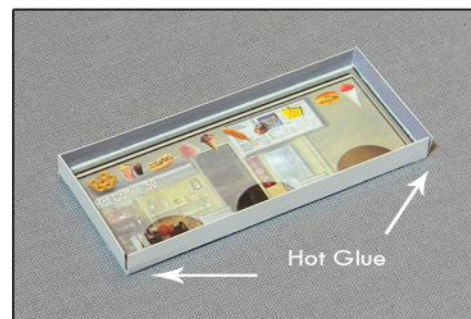
STEP 10 - Restrooms. Cut out, score / fold the sides of restroom illusion rooms and use hot glue to permanently adhere all sides together.



Step 11 - Restroom Illusion Room - hot glue to the backside of Bleacher building



Step 12 - Cut out Concession area window for illusion room placement



Step 13 - Score and fold concession area illusion room. Hot glue the edges together.



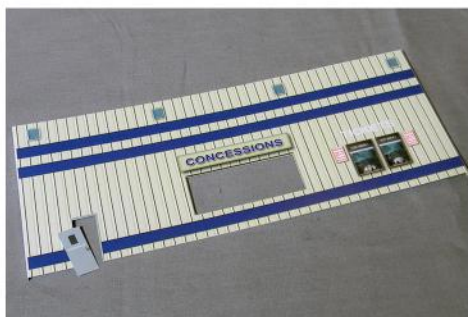
ASSEMBLY INSTRUCTIONS

Photo Real Scale Building Kit by

INNOVATIVE
HOBBY SUPPLY

BK 6431
Modern
Bleachers

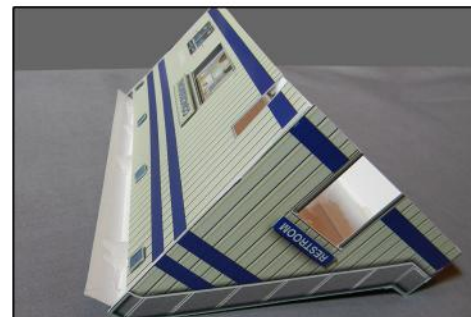
1/64 Scale



STEP 14 - Backwall of bleacher building. Using sharp hobby knife, cut out door. Use clear tape on back for working hinge. When cutting out door, cut a little extra off the edges of the door so it doesn't bind on door frame. You will find the door works better.



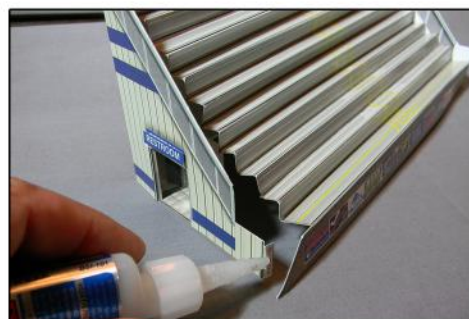
STEP 15 - Hot glue concession area illusion room in place. Working hinge entry door should look as shown. 3-D optional features such as "concession" sign, and "vents" can be affixed to this wall by placing a drop(s) of hot glue in place (to be used as a spacer) and place sign or vent before glue cools.



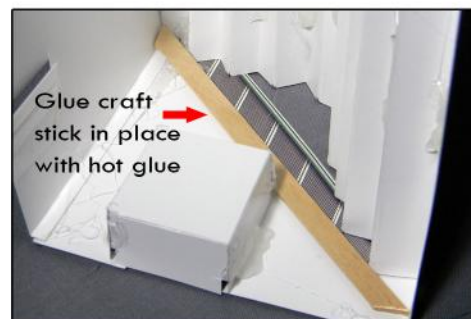
STEP 16 - Glue the back wall of the bleachers building to the two end pieces that have restroom illusion rooms. You will notice the main building structure will now begin to take shape.



STEP 17 - Bleacher seating. Score along all seating lines to be folded. Using a heavy steel straight edge of edge of a desk, bend all seats at 90-degree angles. Take special care in doing this. Your bleacher seats will end up looking better by taking your time.



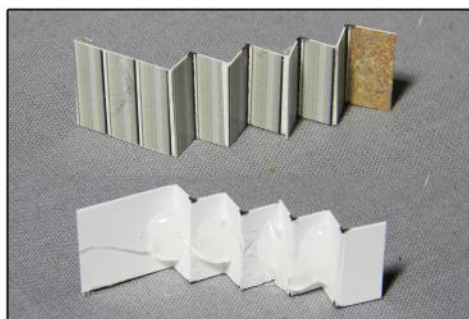
STEP 18 - Glue the front sides of the bleacher seats to the ends of the modern bleacher building. Use hot glue or quick-setting hobby glue. Reinforce inside edges/ corners with hot glue.



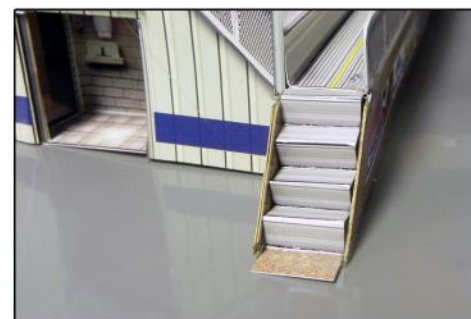
STEP 19 - Use hot glue to adhere a craft stick in place where the bleacher-stand seating will be set in place. Craft sticks help keep seating look uniform, and add strength / rigidity to the entire building structure.



Step 20 - Fit bleacher seating in place, and set with drops of hot glue.



Step 21 - Bleacher steps. Score and fold steps. Lock angles with hot glue.



Step 22 - Finished steps should look like this once everything is glued into place.



ASSEMBLY INSTRUCTIONS

Photo Real Scale Building Kit by

INNOVATIVE
HOBBY SUPPLY

BK 6431
Modern
Bleachers

1/64 Scale



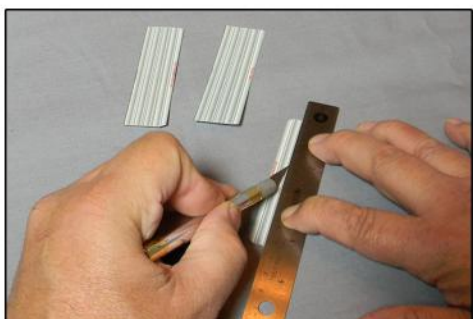
Step 23 - Using hobby glue, place the missing piece of hand railing at the front left corner of bleacher seating. Using tweezers or the tip of a hobby knife to place this piece makes the task much easier, precise.



Step 24 -Top railing. Score & fold top railing, glue together, glue to top of modern bleacher building



Step 25 - Front / lower railing. Score & fold, then glue the front railing together and affix to the front of bleachers. Use drops of hot glue behind the railing to strengthen the bond to the bleacher seat flooring.



STEP 26 - Roof support pillars. Score / fold short (rear) and long (front) roof support pillars. Note: The roof is considered "Optional". If you do not wish to use the roof, skip the following steps 26-31.



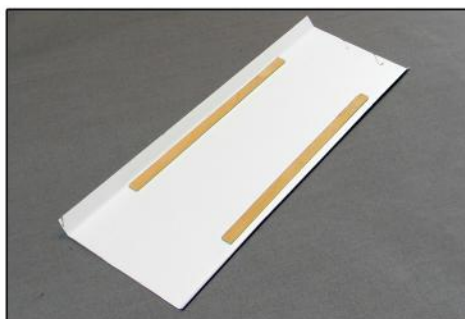
STEP 27 - Use hot glue to lock the 90-degree angles you have created on each edge of the front and rear roof support pillars. Allow glue to cool before releasing hand held pressure.



STEP 28 - Insert a bead of hot glue into the end of each roof support pillar, and place that end onto the bleacher seating before glue cools. For correct placement, recommend placing rear (short) support pillars on the highest last step, and long (front) pillars on the second bleacher step.



STEP 29 - Roof - score and fold the roof along the cut lines in the manner shown.



STEP 30 - Reinforce the roof by flipping it over. Using hot glue, adhere craft sticks to the front & back edges of the roof.



STEP 31 - Place large drops of hot glue in each of six roof support pillars, and place the roof into position.



ASSEMBLY INSTRUCTIONS

Photo Real Scale Building Kit by

INNOVATIVE
HOBBY SUPPLY

BK 6431
Modern
Bleachers

1/64 Scale



Front Views



Rear Perspective



Rear of Building Detail



Restroom Illusion Room ►

IMPORTANT: Always wear safety glasses when using sharp tools or heated glue guns. Keep all materials away from extreme heat or flames.

Adults must carefully supervise anyone under the age of 16 and assist in cutting and gluing.

Unplug hot glue gun when not in use and follow manufacturer's safety guidelines.

Do practice scoring and folding component parts.

Do detail all cut edges with water based marker before assembly.

Do test fit parts before gluing

INNOVATIVE
HOBBY SUPPLY

11610 Jay Street NW
Minneapolis, MN 55448

www.innovativehobbysupply.com

Customer Service - 866-712-4059

E-mail - info@innovativehobbysupply.com