



ASSEMBLY INSTRUCTIONS

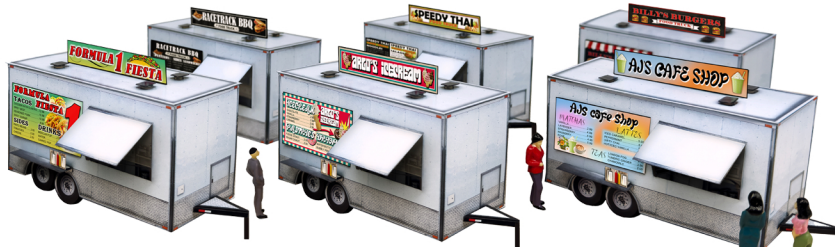
Photo Real Scale Building Kit by **INNOVATIVE**
HOBBY SUPPLY

**Food Truck
Trailers**

**Instructions are for both
1/64 and 1/32 scale kits**

READ ALL STEP BY STEP INSTRUCTIONS

- A new alternative to plastic form scale building models!
- Photo Real Scale Building kits may be the most realistic kits available!
- Great for use on model dioramas, slot car, and train track layouts!
- Designed using real building elements for the most realistic appearance



Footprint Dimensions

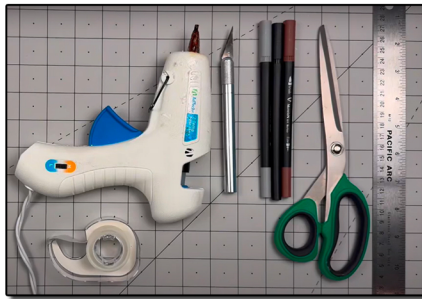
Model Base

8" x 11"

Foundation 5" x 9"

All scale building kits offer many optional features, for a variety of creative ways to complete each project!

Free replacement parts are available
call: 866-712-4059



STEP 1 - Collect the correct tools.

For best results, we suggest you gather at least the most basic tools you will need to complete assembly. While you may find more tools that will help you achieve outstanding results, we suggest you start with the following: Hot glue gun, scissors, variety of water based colored markers, tweezers, straight edge rulers, hobby knife, instant setting high strength hobby glue Plus 4ea, Hot Glue Sticks



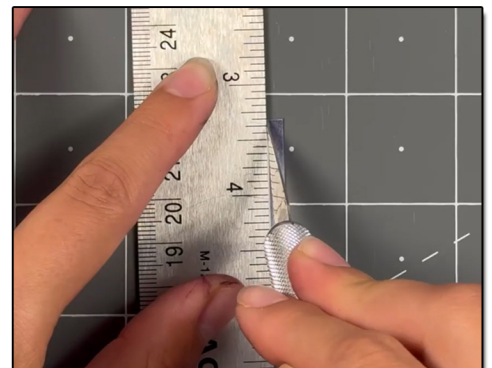
STEP 3 - With appropriate color markers, detail the edges of all the parts you cut out. This will result in a finely finished project once assembled.

Cut out all components and place in a safe area and place all parts in a tray so you do not lose any.

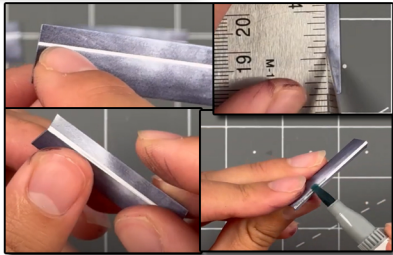


STEP 2 - Empty contents of the kit, carefully cut out all the individual parts to be assembled with a Scissors. The most precise cuts you can make will result in a dramatically better looking finished project. Use smooth long scissor strokes on the bigger parts.

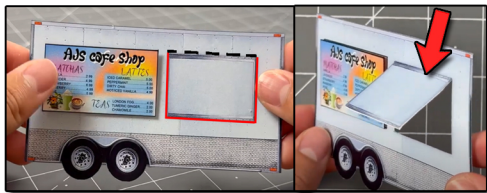
STEP 4 - **Scoring.** Using a Hobby Knife (see picture) and a straight-edge ruler, apply lighter Blade pressure onto the marked fold line on the part you wish to fold. Scoring along these lines to be bent makes bending all printed parts easier, and results in a much cleaner looking fold. Bend parts using the length of your straightedge ruler or a desk edge
Scoring is an essential skill. Practice on Scrap piece.



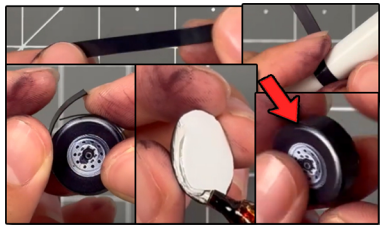
TIP: Look Ahead At All Photos For Extra Guidance



STEP 5 - With scale building kits, there is usually no correct place to begin. In this case, we'll start by prepping the all of the stuff before assembling. Lets start with the shelves. Touch up the outer edges with a gray watercolor marker, score the white line with a hobby knife and ruler. Then fold the small tab 90 degrees downwards. Touch up the scored seam with the same marker. Repeat for all 6 shelves and put aside for later.



STEP 8 - Then grab a front side of a food truck. Score the outer edge of the front window, outside the window sliver frame. Cut the left and right sides with a hobby knife and ruler. Then cut the bottom side. After that, **ONLY** score the top part of the window frame. Gently push it open and fol it slightly upwards. Touch up the inside white edges with a marker. Repeat this step to all front side windows.



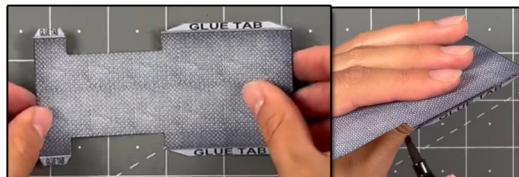
STEP 11 - (Making tires are optional) Then grab a tire tread, color the back side with a black marker and the sides. After round the tread on to a pen. Once its rounded, slowly connect it around a tire with hot glue. Placing the hot glue on the back outer edges of the tire. Glue small sections at a time until wrapped around completely. Place the another tire on top evenly, in the same direction of the other tire. Touch up any white areas with a black marker Repeat this step for all of the food trucks you will be assembling. Side note* each food truck uses four tires.



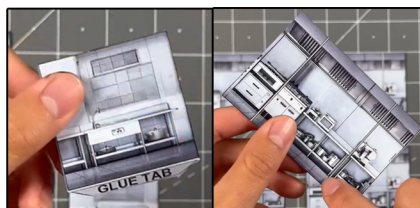
STEP 6 - The next step, gather all of the roofs and roof vents. Touch up all of the roofs and vents outer edges with a dark watercolor marker. Place a small amount of hot glue on to the original art vent on the roof. Then place a roof vent add on carefully on top. Glue the other three vents on top in the same direction. Repeat this step to all six roofs, put aside for later.



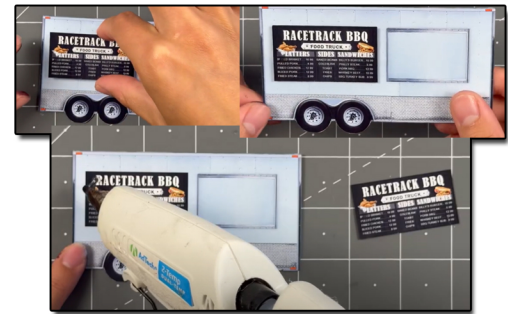
STEP 9- Now grab the restaurant signs, score the glue tabs with a hobby knife and ruler, fold the tab 90's degrees inwards from the sign. Touch up with a corresponding watercolor marker. Repeat this to all food truck signs. Put aside for later.



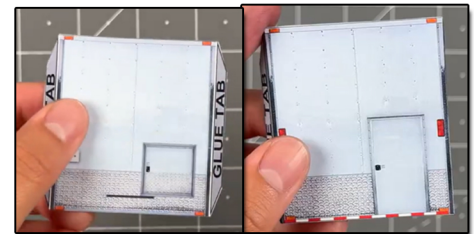
STEP 12 - After grab the six bases. Score the glue tabs with a hobby knife and ruler. Fold all of the downwards. Touch up with a black marker. Repeat this to all of them.



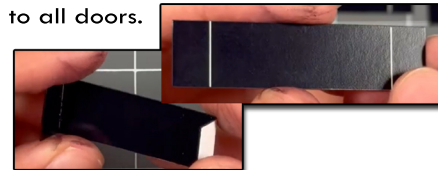
STEP 13 - Now grab the illusion rooms, score the white lines on both sides for the front window ones. Score the back door one's glue tab. After scoring, fold. Fold the glue tab inwards. And the two side tabs on the front window one slightly inwards. Touch up with a gray marker. Do this to all illusion rooms and put aside for later.



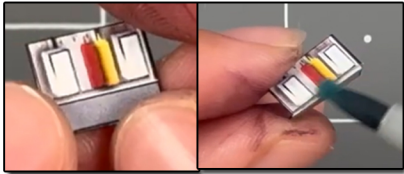
STEP 7 - Now let's glue on the front menus on to the front sides of the truck. Simply place hot glue on to the original menu sign, then place the matching sign on top evenly. Do this to all of the food trucks you will be assembling. If all of them repeat this step to all.



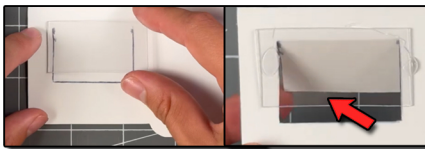
Step 10 - Next grab the left and right walls and score the two glue tabs with a hobby knife and ruler. Fold the tabs inwards 90 degrees. Touch up with a marker. For the left wall (with the door) cut the part of the door with scissors that opens. Stop at the top of the door. Cut the top side of the door with a hobby knife and ruler. Then where the doors hinges are score. Fold the door inwards. Touch up the white edges with a marker Repeat this step to all doors.



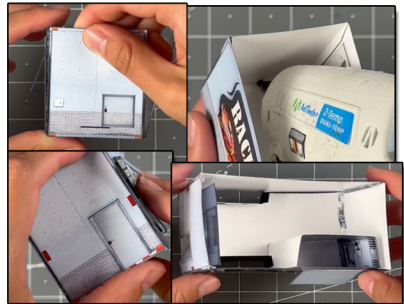
STEP 14 - Next grab the tire section areas. Score the two white lines with a hobby knife and ruler. Fold the two sides 90 degrees inwards Touch up with a black marker, and put all of them aside for later. Each truck needs two of these.



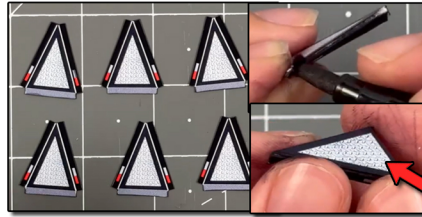
STEP 15- After, grab the condiments, score the white line, fold the time inwards. Then touch up the scored seam with a gray watercolor marker. Repeat this step for all of them. Put aside for later.



STEP 18- Then grab a front wall for the food truck you will be assembling first. Flip it over so the white side is facing you. Cut a piece of glass into a 2 X 1 inch piece. Remove both sides of wrapper until its see through. Place it evenly on top of the window open section on the back of the front wall. Leave a 1/4 inch gap on the bottom open. Secure with hot glue or tape. Make sure you can not see glue or tape through the front side.



STEP 21 - Then grab the side walls. Make sure you are gluing the correct wall to the correct side. Make sure the front of the truck is facing you before doing anything. Then place the right wall on to the right side, left side on to the left side. Glue one of them on to the trailer. Glue one glue tab at a time. Repeat this step for both sides. Then at the inside of the side walls, place a tiny amount of glue behind it to connect it evenly to the base. After grab the illusion rooms. Place the front window one behind the window. Secure with hot glue. Grab the back door illusion room, and place it a half an inch away from the door. Use the glue tab to secure on to the inside of the base.



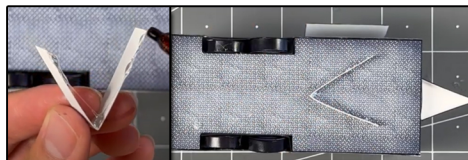
STEP 16 - Grab all of the hitches, score all of the white lines and the gray tab in the back with a hobby knife and ruler. Fold the small tabs inwards evenly so they all touch. Then touch up the scored seams with a black marker. Repeat for all 6, put aside for later.



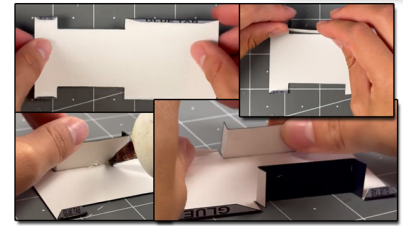
STEP 19 - (For the people who are adding the 3D tires, continue reading this step) Cut the tires out carefully on the front wall and back wall. Use scissors or a hobby knife. Avoid cutting any frames. Only cut the tires out. Touch up the cut edges with a gray marker.



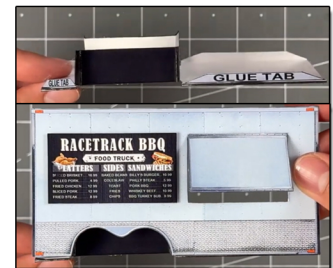
STEP 22 - Grab two tires, place a little glue behind the tire closer to the top. Place it inside the base tire section, closely matching the curve of the trailers frame above the tire area. Glue the other tire next to it in the same direction. Repeat this step to the back side.



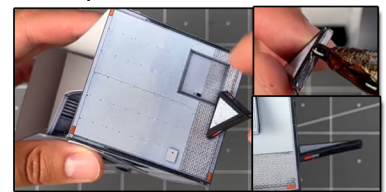
STEP 24 - Grab a food truck bottom supporter, bend it into a triangle. Place glue on the bottom of it, place it on the bottom of the base in between like this, shown in the image above.



STEP 17- (This step is for the people who want to add on the 3D tires. If not skip to 18). Now lets assemble a food truck. Grab a base, flip it over so the white side is facing you. Grab a tire section we scored earlier. place it in between the base indent. Place hot glue behind the tire section against the back of it and the base. Hold straight up until dry. Glue another tire section on the other side.



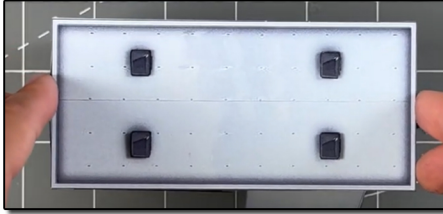
STEP 20 - Grab the base, have the longer glue tab face the right side and the small glue tab on base face the left side. (Also make sure the art on the base is facing downwards) Grab the front wall and place it evenly with the glue tabs and the base. Use hot glue to secure. Then secure the back wall after. Same steps.



STEP 23 - Grab a hitch, place hot glue along the gray tab, on the right wall there is a black line. Glue the hitch evenly on to it. Making sure it is parallel to the base.



STEP 25 - Grab the small rectangle, color the back to black. Place it under the tip of the hitch with hot glue.



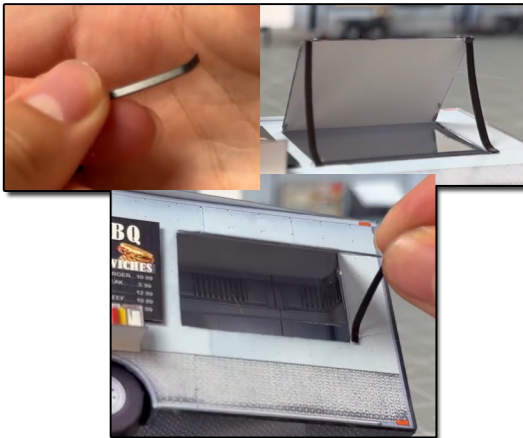
STEP 26 - Grab a roof and place it evenly on top, secure it by placing a small amount of hot glue on the bottom edges.



STEP 27 - Then grab a matching sign, and glue it on top of the roof evenly in the middle with hot glue. Use the glue tab to secure. Adjust the sign so its straight up.



STEP 28 - Grab a shelf and place it anywhere you would like. I glued mine right above the front side of the tires. Then place a condiment on top of the shelf.



STEP 29 - Lastly grab the two longer rectangle pieces, color the back so its black and the sides. Carefully bend a small end on both pieces. on the bent part, place glue behind it. Place it on the bottom of the window frame either on the left or right side. Then glue the other piece on to the side you didn't place one on yet. Glue the tops of the pieces on to the top bottom part of the window cover. Repeat step 17-29 if you want to assemble more than one food truck! Have fun.

***Go to the next page to see
the final results.***

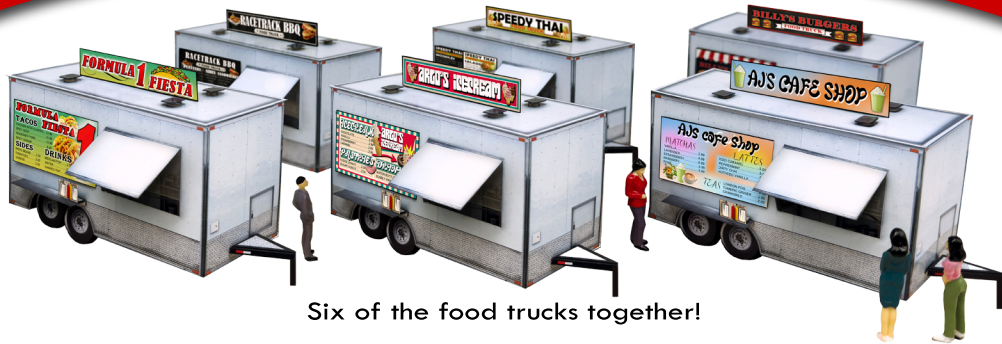


ASSEMBLY INSTRUCTIONS

Photo Real Scale Building Kit by

INNOVATIVE
HOBBY SUPPLY

**Food Truck
Trailers**



Six of the food trucks together!



Front side



Left Side



Right Side

Rear side

