

SUGAR CREEK HOTEL PHOTO REAL BUILD KIT

by *Innovative Hobby Supply*

Making Traditional Hobbies Better!

INSTRUCTIONS FOR:

Kit BK 4807 "Sugar Creek Hotel" Build Kit ~ 'O' scale

Free replacement parts are available simply by calling 866-712-4059.

Includes two (2 ea.) Ultra Sign sample sign posts.

Views of the completed "Sugar Creek Hotel" build kit shown below are for reference purposes and as an aid in assembly.



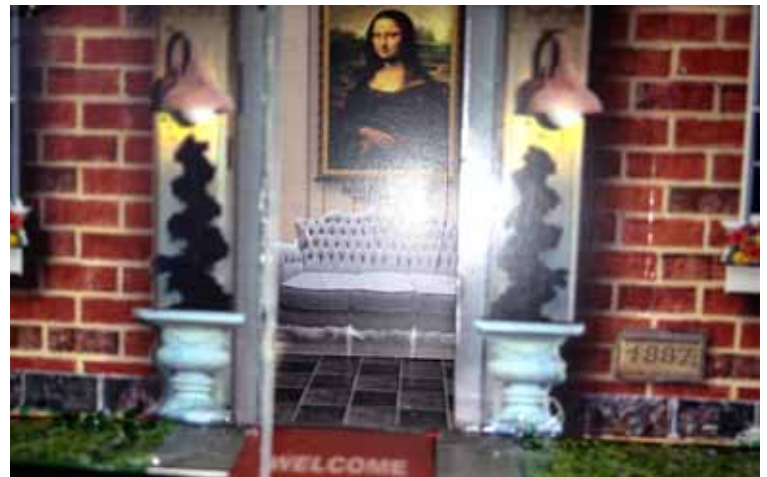
Fire Department with open door



Fire Department interior view



Fire Department top down view



Fire Department detail view

Innovative Hobby Supply

11610 Jay St. NW, Minneapolis, MN 55448

Customer Service: 866-712-4059 ~ email: info@innovativehobbysupply.com

INTRODUCTION

Please read these step-by-step instructions thoroughly before you undertake any cutting or assembly. Then follow the simple step-by-step instructions. This build kit is a medium skill-level kit in our **Photo Real Building Kits** product line. Assembly time is approximately 2 hours. With just a little patience and the right tools, this amazing kit can be constructed by any hobbyist, offering a more realistic-looking model than painted plastic forms. Printed on our exclusive, high-definition 'Flex Stock' material, these kits are very rugged and will provide many years of enjoyment on your train layout, slot car track, or diorama.

After you've read through the assembly instructions once, start again at the beginning and follow the steps to cut and assemble the model. We strongly recommend using a hot-melt mini-glue gun for assembling this kit. (Mini-glue guns are available at your local craft store, as well as many hardware stores and drug stores, for less than \$5.00.) Hot melt glue is easily controlled and sets-up fast, which greatly speeds-up the assembly time since you don't need to wait for the glue to dry. **Use hot-melt glue sparingly:** apply an amount just sufficient to tack the items together. You can reinforce the bond surfaces with a final bead of hot glue – or with white glue – once you are satisfied with placement of component pieces.

These instructions include plenty of clear, full-color photographs to make assembly easier. As with all model assembly, some patience is required. The skills acquired in constructing your first building kit will carry over to our other kits, which will make it easy to add as many buildings to your layout as you desire – saving you time and money and giving you better results than for most molded plastic kits. Enjoy the most innovative and realistic scale-model building kits available.

GETTING STARTED

IMPORTANT: The most important skill in getting a good result is the technique of 'scoring' the material where indicated (fig. 1). Scoring is simply making a shallow cut through the top layer of the paper with a sharp hobby knife (e.g., an X-acto knife) while using a ruler or other straight edge.



Figure 1 - Scoring the material.

This technique is simple to learn, yet vital to getting a perfect fold – even on small parts! Using this technique helps to ensure a beautiful trouble-free assembly. Without it, the folded edges tend to buckle unevenly and look bad when assembled.

Practice on a scrap piece until you have perfected your technique sufficiently to have confidence. The hobby knife should be used for scoring only! When cutting out parts completely, use a sharp scissors as this material is tough and does not cut easily with a knife. Remember to always wear safety glasses when using sharp

tools or hot glue guns. Keep all materials away from extreme heat or flames. Adult supervision is required for those under age 16.

- 1) Collect the assembly tools you will need: hobby knife, hot-melt mini-glue gun, straight-edge, scissors, tray (for separating and storing component pieces from scrap), tweezers (figs. 2-A, 2-B).



Figures 2-A, 2-B - Useful tools/materials for assembly.

- 2) Other useful tools include hobby glue (also called white glue) waterproof Sharpie-type markers in red, black, brown, green and silver for detailing edges. Clear tape is useful for temporarily holding components together from the inside areas.
- 3) Carefully cut out the seven main components as shown: #1 front wall, #2 right side wall, #3 left side wall, #4 back wall, #9 center support, #10 roof, #23 floor base (fig. 3). Set aside these components.



Figure 3 - Cut out seven basic components and detail the cut edges with colored marker.

- 4) To free the doors and allow them to open and close, score the hinge area using a straight edge and hobby knife. Using a sharp scissors, carefully cut a straight cut between the doors and jamb and along the top edge (figs. 4-A, 4-B).



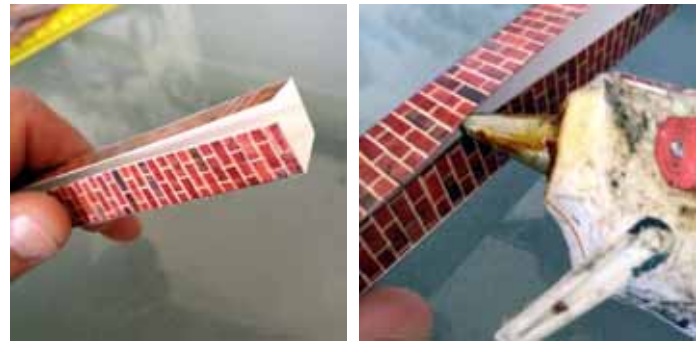
Figures 4-A, 4-B – Score the hinge side and cut the swing side of the doors to open.

- 5) Detail-out all white edges with the appropriate colored markers. Use the edge of the marker as shown (fig. 5-A thru 5-C). Detail the building edges with brown marker. Use green marker for grass and silver marker for the sidewalk and roof.



Figures 5-A thru 5-C – Detail the cut edges of components with the appropriate colored markers.

- 6) Score the interior brick center support and fold it along the edge of a desk or table into a square as shown (fig. 6-A). Use hot glue to seal the open edge two inches at a time while working along the length toward the top (fig. 6-B). Set aside. **Note:** the center support does not show when the model is complete.



Figures 6-A, 6-B - Prepare the brick center support.

- 7) Cut out the four inside illusion rooms: 1) front lobby; 2) back storage room; 3) elevator area; and 4) stairway foyer. Score and fold each illusion room along the white lines as shown (figs. 7-A thru 7-C). If desired, you can cut open the inside doors for the rear loading room, as well as interior doors for added realism when the doors are shown open.



Figures 7-A thru 7-C - Cut out and score the inside illusion rooms and door details.

- 8) Using hot-glue, attach each illusion room behind its proper door. Attach the storage room behind the rear doors, the front lobby behind the front doors, the elevator and stair case on either side door. Make sure bottom of each illusion room is perfectly flush with the bottom edges of the hotel walls and properly centered over the door (figs. 8-A, 8-B).

TIP: One way to ensure a good result is to tack the illusion room into place and check overall position before reinforcing the bond with more glue at the back side. Illusion room side-walls may be angled slightly outward.



Figures 8-A, 8-B – Attach the illusion rooms behind the outer doors in the proper position.

- 9) Use hot glue to attach the center support to the base at the position indicated by running a bead of hot glue along the bottom edge of the support (fig. 9). Allow the glue to cool.



Figure 9 - Attach the center support to the base.

ASSEMBLING THE WALLS

TIP: You can use scotch tape on the inside of the assembly to hold the walls in proper position while tacking or gluing. Hot glue can go right over the top of the tape and doesn't need to be removed.

- 10) Line up the back wall on the base piece and tack one end in place with hot glue; then tack the other end (fig. 10). Hold the wall vertical while applying slight tension until the glue cools. When you are satisfied with the placement, reinforce the joint with a bead of hot glue along the entire length. Continue to hold the back wall vertical and allow the glue to cool.



Figure 10 - Attach the back wall to the base.

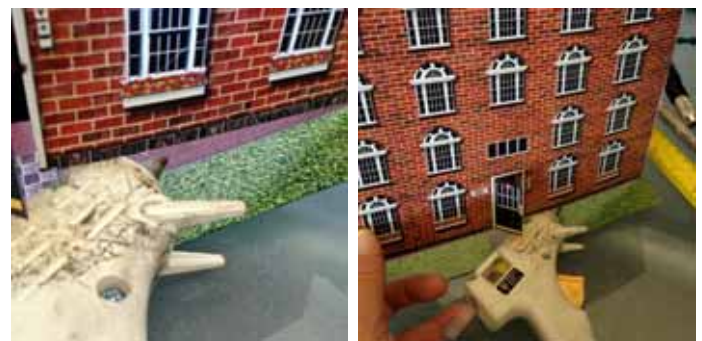
- 11) Tack one side wall to the back wall so it makes overall contact leaving no gap. Then tack the side wall to the base from the inside, keeping the side wall vertical. When satisfied with the placement, reinforce the seam along the wall-to-base joint only with a bead of hot glue. Next, starting at the bottom, glue the two wall corners together from the inside keeping

the walls vertical as you work your way up the side (fig. 11). Allow the glue to cool.



Figure 11 – Attach the back wall and side wall.

- 12) Attach the remaining side wall. Apply a ¼-in. long bead of hot glue along the edge of the back wall and quickly line-up and press the remaining side wall in place. Hold it in position until the glue sets up. Then work along the joint between the back wall and remaining side wall in 1-inch increments until the two walls are fully joined at the corner only.
- 13) Attach the remaining side wall to the base by lifting slightly and running a bead of hot glue about half-way along the base, avoiding the door area (figs. 12-A, 12-B). Quickly set the side wall on top of the bead of hot glue and hold in place until the glue cools. Move on to Step 14 to complete the joint.



Figures 12-A, 12-B - Attach the remaining side wall.

- 14) For spacing purposes, lay down the front wall inside the assembly as shown in Fig. 13 (next page). Finish attaching the remaining (unglued) portion of the side wall. Allow the glue to cool.
- 15) Tack the front wall to the base from inside the assembly. Then tack the front wall to the two side walls while holding it vertical. When you are satisfied with the placement, run a bead of hot glue along the three inside joints. Allow the glue to cool.



Figure 13 - Use the front wall for spacing the side wall before completing the remaining side wall.

ASSEMBLING THE ROOF

- 16) Test fit the roof piece so the down-spout hole is positioned over the side down-spout. Make sure there is an overhang, or margin, of 1/8-inch on all sides. This margin is required for proper assembly. Apply a generous amount of hot glue on top of the center support. Quickly and carefully position the roof over the assembly, then lower it into place and apply slight pressure on the center support to affix it to the roof (fig. 14). Allow the glue to cool.



Figure 14 -Attach the roof to the assembly.

- 17) Turn the assembly upside-down (fig 15) and let it rest on the table. Tack the roof to the four walls while maintaining the 1/8-inch margin or overhang all around. Once you are satisfied with the roof placement, complete attaching the roof to the walls by running a thin bead of hot glue along the four sides. Allow the glue to cool.

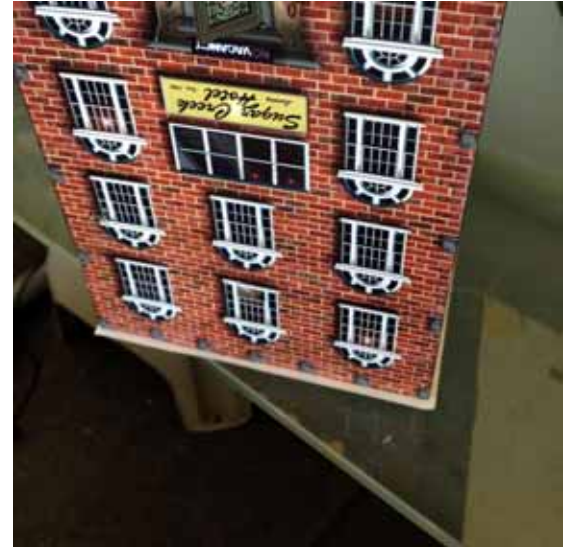


Figure 14 – Turn the assembly upside-down to complete attaching the roof along the margin.

- 18) Turn the assembly right-side-up and apply a drop or two of hot glue at the four corners while applying slight pressure to make sure the roof corners are well attached (fig. 16).



Figure 16 – Make sure the roof corners are well attached.

DETAILING THE ASSEMBLY

- 19) Cut out any detail items that you intend to include such as awnings, chimneys, roof vents and the dumpster. Score each item at the score lines and detail-out the cut edges with the appropriate colored markers. Fold or shape each item as shown along the edge of a table or desk.



Figure 17-A thru 17-C - Cut, score and shape detail items.

20) Form and shape the awnings as shown in Fig. 17-C. Apply a bead of hot glue (or white glue, if preferred) along the attachment edge and attach each awning just above the doors. The wide awnings are for the front and back doors and the narrow ones are for the side doors. Be sure the awnings are attached level with the base.

21) To attach the roof vents, first add some depth by applying a drop or two of hot glue to the underside of the vents to form a spacer. Allow the glue to cool. Then re-heat the glue a bit to attach the vents to the roof. Using a spacer improves the look of realism. The hotel sign-board can be attached in the same way (figs. 18-A thru 18-C.)



Figures 18-A thru 18-C – Detail and attach the roof vents and hotel sign board.

22) Use black or brown marker to color the white, inside surfaces of the chimneys. When the marker has dried, apply a bead of hot melt glue along the open wall joint to form the stack. Attach the top-caps to complete the chimney subassemblies as shown (fig. 19-A). Attach the chimneys to the indicated locations on the roof (fig. 19-B). Touch up the chimneys as needed with colored marker to get rid of exposed white spots.



Figures 19-A, 19-B – Detail and assemble the chimneys and attach them to the roof.

23) Glue the dumpster lid together using white glue (fig. 20-A). Then assemble the dumpster as shown (fig. 20-B) using hot glue. Attach the interior trash detail inside the dumpster assembly and attach the lid just at the hinge area so it can be opened and closed. The dumpster assembly can be attached to the base near the down spout.



Figures 20-A, 20-B – Assemble and attach the dumpster.

24) Attach the welcome mats at the front entrance using white glue (fig. 21).



Figure 21 - Attach the welcome mat.

25) Your hotel assembly is now complete (fig. 22). You may attach the Sugar Creek Hotel signs over the printed signs using the spacer method for even more added realism. Add additional details as desired such as lichen, trees or figurines as indicated in your layout. Enjoy your new Sugar Creek Hotel!



Figure 22 – Add details as desired to the assembly.

BK 4807 Sugar Creek Hotel

*The skills you have learned in assembling this build kit will make constructing any of our line of **Photo Real Build Kits** faster and easier. Check out our entire line of photo-realistic build kits at www.innovativehobbysupply.com*

Enter Our Photo Contest!

Would you like to show off your completed **Photo Real** build kit? Enter our photo contest and *be the first to receive our newest, unreleased build kits completely free for one year!*

Innovative Hobby Supply

Making Traditional Hobbies Better!

We will feature the best photos of your finished assemblies and layouts. The contest ends September 1, 2013. To enter, visit us online at:

www.innovativehobbysupply.com

BK 4807 ~ “Sugar Creek Hotel” Build Kit

Footprint Dimensions: Building – 5.2 x 9.15 in. Base – 7.6 x 9.75 in.

Six sheets. Kit includes two (2 ea.) Ultra Sign sample sign-posts.



- Finally, a new alternative to plastic form scale-building models.
- PhotoReal build kits may be the most realistic kits available.
- Great for use on model dioramas, slot car and train layouts.
- Easy to assemble! Full-color detailed instructions available on-line.

BK 4807



Suitable for 1/48 scale projects.

For free, detailed assembly instructions in PDF format, go to www.innovativehobbysupply.com and hover your mouse over the ‘Photo Real’ tab. Then under ‘Scale Building Kits’ will be the ‘Build Kit Instructions’ page. Find the instructions for your build kit and click download. If you need instructions in hardcopy, please contact us at the address below.

www.InnovativeHobbySupply.com ⇒ Photo Real ⇒ Scale Building Kits ⇒ Build Kit Instructions

Look for These Other Exciting 1/48-Scale Build Kits!

- BK 4800 Quonset Hut
- BK 4801 Motorcycle Shop
- BK 4802 Racetrack Bleachers
- BK 4803 Garden Houses
- BK 4804 Grain Dryers
- BK 4805 Farm Buildings
- BK 4806 Ticket and Gate Entrance
- BK 4808 Modern Gas Station
- BK 4809 Barber Shop
- BK 4810 Commercial Steel Garage
- BK 4811 4-Stall Pit Garage
- BK 4812 Sandstone Rambler
- BK 4813 Race Tower
- BK 4814 Fire Department
- BK 4815 Bait Shop
- BK 4816 Log Cabin
- BK 4817 Train Station
- BK 4818 General Store
- BK 4819 Drive-In Theater
- BK 4820 Roadside Diner
- BK 4821 Brick Rambler



11610 Jay St. NW ~ Minneapolis, MN 55448

www.innovativehobbysupply.com

Customer Service – Tel. 866-712-4059 • Email – info@innovativehobbysupply.com