



ASSEMBLY INSTRUCTIONS

Photo Real Scale Building Kit by **INNOVATIVE**
HOBBY SUPPLY

**REPAIR
SHOP**

Side note* If you are building a 1/25 scale diorama go read the 'Western diorama instructions' instead

PLEASE READ

READ ALL STEP BY STEP INSTRUCTIONS

They are exactly the same, but theres a few extra steps you'll need to know when assmbling

- A new alternative to plastic form scale building models!
- Photo Real Scale Building kits may be the most realistic kits available!
- Great for use on model dioramas, slot car, and train track layouts!
- Designed using real building elements for the most realistic appearance



+ A Graffiti Garage verison

Footprint Dimensions

Model Base
8" x 11"

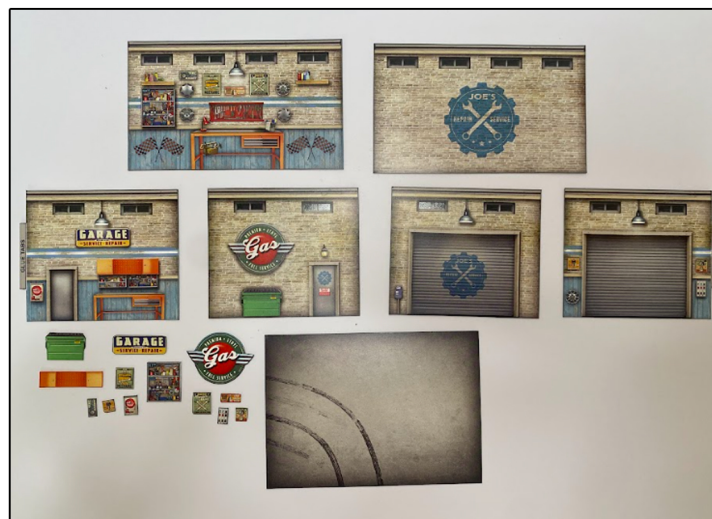
For both 1/25 and
1/64 scales

All scale building kits offer many optional features, for a variety of creative ways to complete each project!

Free replacement parts are available
call: 866-712-4059



Cut out all components and place in a safe area and place all parts in a tray so you do not lose any.



STEP 1 - Collect the correct tools.

For best results, we suggest you gather at least the most basic tools you will need to complete assembly. While you may find more tools that will help you achieve outstanding results, we suggest you start with the following: Hot glue gun, scissors, variety of water based colored markers, tweezers, straight edge rulers, hobby knife, instant setting high strength hobby glue Plus 4ea, Hot Glue Sticks



STEP 3 - With appropriate color markers, detail the edges of all the parts you cut out. This will result in a finely finished project once assembled.

STEP 2 - Empty contents of the kit, carefully cut out all the individual parts to be assembled with a Scissors. The most precise cuts you can make will result in a dramatically better looking finished project. Use smooth long scissor strokes on the bigger parts.

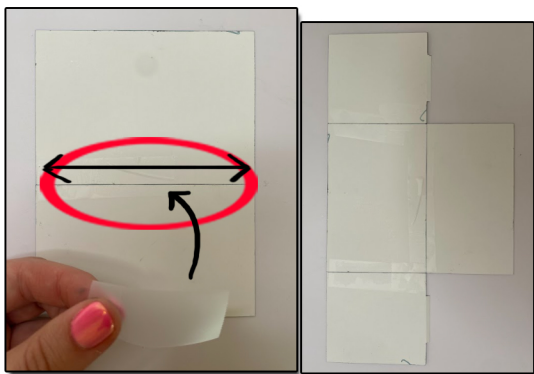
STEP 4 - **Scoring.** Using a Hobby Knife (see picture) and a straight-edge ruler, apply lighter Blade pressure onto the marked fold line on the part you wish to fold. Scoring along these lines to be bent makes bending all printed parts easier, and results in a much cleaner looking fold. Bend parts using the length of your straightedge ruler or a desk edge
Scoring is an essential skill. Practice on Scrap piece.



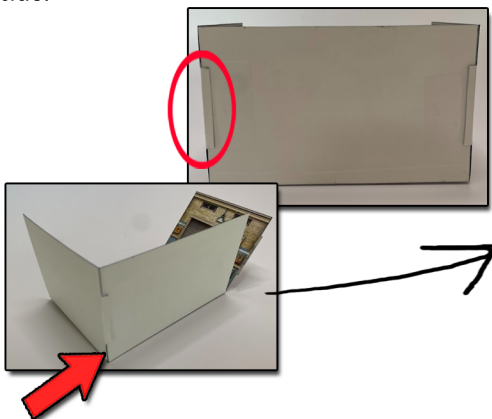
TIP: Look Ahead At All Photos For Extra Guidance



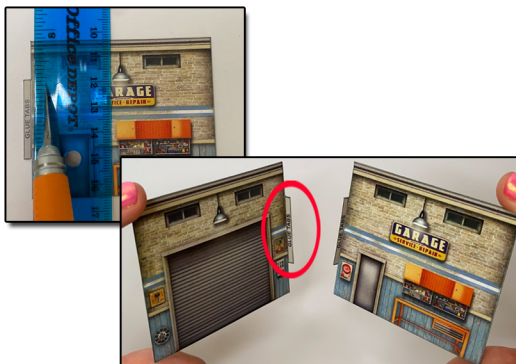
STEP 5 - With scale building kits, there is usually no correct place to begin. In this case, we'll start by prepping the walls. Grab the right, left, and main inside and outside walls, including all the add ons. Find the original art for any add on your gluing on to the walls, then place small globs of hot glue on to the original art, and let dry. Then place a small amount of hot glue behind the add on your applying, and add on top of the original art evenly. Continue to apply the add ons to the dioramas walls.



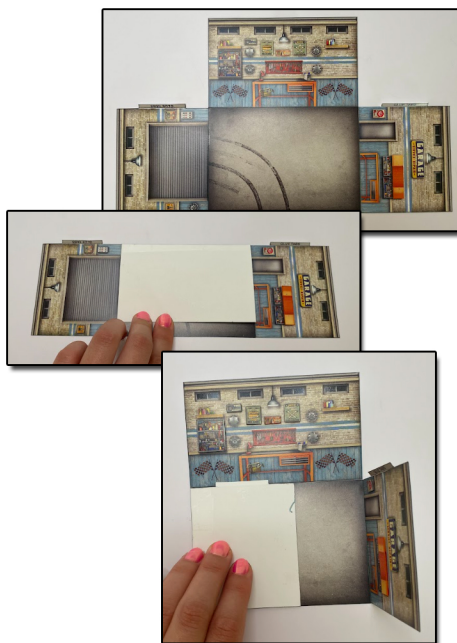
STEP 8 - After the inside walls are flipped correctly, place scotch tape along both the bottom of the walls and the base together. When placing the tape on, hold whichever wall your taping to the base as close as you can, so the cracks are invisible from the other side.



STEP 10- Then bring the Main wall inward 90 degrees up, including one of the side walls. Fold the glue tab on the side wall 90 degrees towards the back of the main wall. Place a piece of tape on to the glue tab and stick it to the back side of the main wall to hold both together. When taping the walls together make sure they are close to each other. If the top and bottom corners are not together completely, place a small amount of hot glue behind the corners while holding the two walls nicely together until the gap is sealed tightly. Repeat step 10 for both side walls.



STEP 6 - Next score the glue tabs on the left and right inside walls. Fold the glue tabs 90 degrees inward, like the photo above.



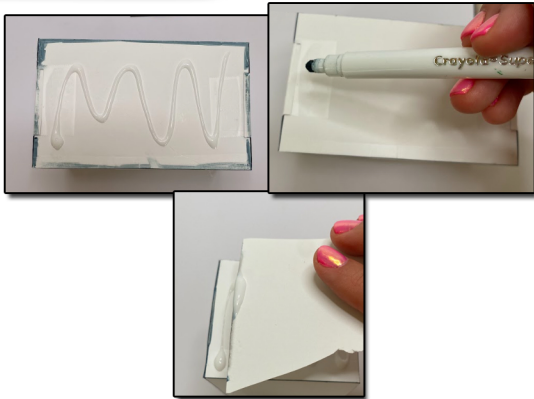
STEP 9- Then gently flip it over so the art side is facing you. Carefully and slowly fold the main and side walls downward so the tape can become more flexible. And so the walls can also stand up straight once they are connected.



STEP 7 - Next, grab all of the inside walls. Place the main wall on top, and the base below it. *The tire tracks on the base needs to be facing on the left side like shown above. Then place the left wall aligned with the left side of the base. And the right wall on the right side of the base. After, Flip everything so the white side is facing you. The ends of the walls need to be touching the bases sides while laying flat when flipped to the white side. Make sure when it's upside down it still looks like Version 1 but facing downwards. Check if the art side is facing the correct way before moving on to the next step. For clarification, you have to move/-adjust the side walls, base, and the main, so it looks like Version 1 upside down. **Side note*** The glue tabs should be closer towards the Main wall.



STEP 11 - Now that the side walls are secured to the main wall, it should look something like this. The next step is to secure the outside walls on to the back of the inside walls. For this step it does not matter which outside wall you glue first.



STEP 12 - As an example, I will be gluing the main outside wall on to the back of the main inside wall. Flip the diorama carefully to the back of the main inside wall so the white side is facing you. Grab a marker that matches the buildings walls, I used a gray marker for this diorama. Carefully color the edges around the back side, like shown above. Its okay if it looks a little messy on the back, because it will be covered later on. This part is optional, coloring around the edges prevents the white from showing on the sides when gluing the outside walls on top. Next place a small amount of white glue around the white side of the wall. Then use a scrap piece of paper or something that has a flat surface you can throw away later, use the scrap piece of paper to drag the white glue evenly on the wall. This will help grab extra glue that is not needed.



STEP 13- Once the glue is spread on nicely place the main outside wall on top evenly, adjust before the glue dries. Then add some clips on top to hold the outside wall on to the back of the inside wall, and hold the rest with your hands until completely dried.



STEP 14 - After the main walls are together, glue the rest of the outside walls to the back of the inside side walls. Repeat steps 12 and 13. And your done.

**Look at the last page
to see all final results**





ASSEMBLY INSTRUCTIONS

Photo Real Scale Building Kit by **INNOVATIVE**
HOBBY SUPPLY

**REPAIR
SHOP**

+ A Graffiti Garage version results



Front of Building



Left Side of Building



Right Side of Building



Rear of Building

