



# ASSEMBLY INSTRUCTIONS

Photo Real Scale Building Kit by **INNOVATIVE**  
HOBBY SUPPLY

**Townhouse  
Kit**

## READ ALL STEP BY STEP INSTRUCTIONS

- A new alternative to plastic form scale building models!
- Photo Real Scale Building kits may be the most realistic kits available!
- Great for use on model dioramas, slot car, and train track layouts!
- Designed using real building elements for the most realistic appearance



## Footprint Dimensions

Model Base  
8" x 11"

Townhouse kit

*All scale building kits offer many optional features, for a variety of creative ways to complete each project!*

Free replacement parts are available call: 866-712-4059



**Cut out all components and place in a safe area and place all parts in a tray so you do not lose any.**



## STEP 1 - Collect the correct tools.

For best results, we suggest you gather at least the most basic tools you will need to complete assembly. While you may find more tools that will help you achieve outstanding results, we suggest you start with the following: Hot glue gun, scissors, variety of water based colored markers, tweezers, straight edge rulers, hobby knife, instant setting high strength hobby glue Plus 4ea, Hot Glue Sticks



STEP 3 - With appropriate color markers, detail the edges of all the parts you cut out. This will result in a finely finished project once assembled.

STEP 2 - Empty contents of the kit, carefully cut out all the individual parts to be assembled with a Scissors. The most precise cuts you can make will result in a dramatically better looking finished project. Use smooth long scissor strokes on the bigger parts.

STEP 4 - **Scoring.** Using a Hobby Knife (see picture) and a straight-edge ruler, apply lighter Blade pressure onto the marked fold line on the part you wish to fold. Scoring along these lines to be bent makes bending all printed parts easier, and results in a much cleaner looking fold. Bend parts using the length of your straightedge ruler or a desk edge  
Scoring is an essential skill. Practice on Scrap piece.





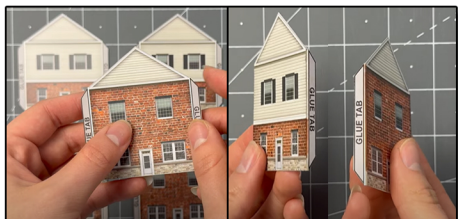
# ASSEMBLY INSTRUCTIONS

Photo Real Scale Building Kit by

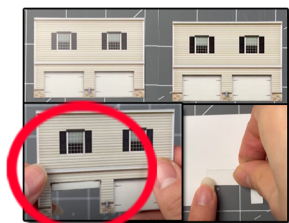
INNOVATIVE  
HOBBY SUPPLY

Townhouse  
Kit

**TIP: Look Ahead At All Photos For Extra Guidance**



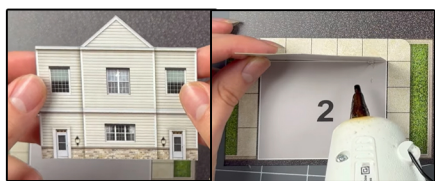
**STEP 5** - For this step, let's gather all the side walls. Score both sides of glue tabs using a hobby knife and ruler. Line up the ruler where the white line starts against the wall. After, fold the tabs inwards. Touch up the scored seams with a corresponding watercolor marker.



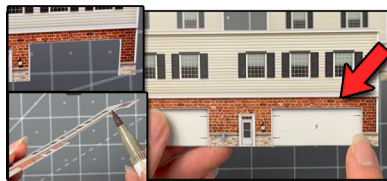
**STEP 8** - Then grab the smaller townhouse back walls, and remove however many garage doors you would like. Repeat the same steps as 6 and 7 to remove and add the small garage door on top to make an illusion of an open door.



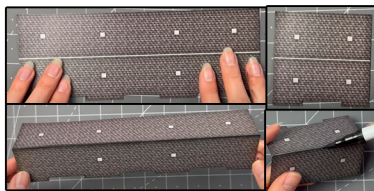
**Step 11** - Next, let's prep the garage illusion rooms. The smaller ones are for number 2 and 3 town houses. The bigger ones are for the number 1 townhouse. Grab however many you need, score both white lines with a hobby knife gently. Fold each side towards you. Touch up the seams with a gray marker.



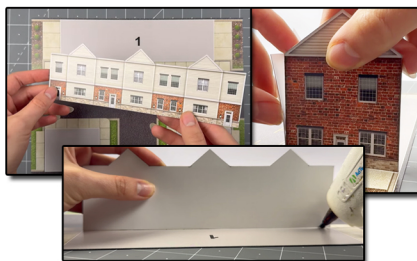
**STEP 14**- After, glue the front small town house wall on to the number 2 base, facing it towards the sidewalk, use the same steps in step 12 to connect all the walls together nicely.



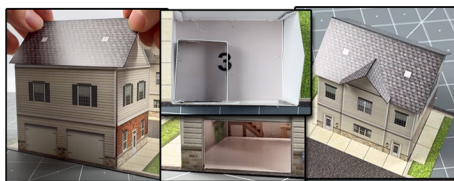
**STEP 6** - Then gather the big back garage wall. Decide how many garage doors you would like open. Before cutting avoid cutting the garage door frames and walls. Create two slits on both of the most outer sides on the garage doors using scissors. Start from the bottom, stopping to almost the top, before hitting the garage frame. For the top, use a hobby knife and ruler to remove the garage door.



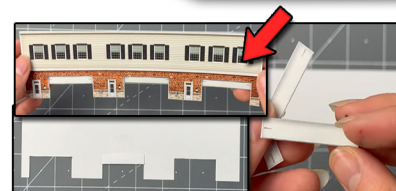
**STEP 9** - On to the next step, grab all of the roofs, and score the white middle line with a hobby knife and ruler. Fold both sides downwards. Touch up the scored seam with a black watercolor marker. Repeat this step for all three roofs, and put aside for later.



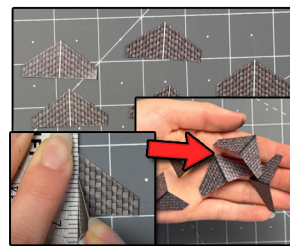
**STEP 12** - After, grab the big front wall and line it up with the number 1 base. Line it up with the white line facing the sidewalk. Place small amounts of hot glue behind the wall, hold until dried. Then glue the all brick side walls on to the front wall using the nearest glue tab, using hot glue.



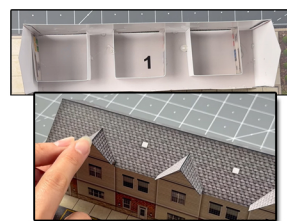
**STEP 15**- Once the number 2 town house is assembled repeat the same steps to secure and assemble the number 3. Place the illusion rooms inside before securing the roofs on top. Then secure the roof dormers on top.



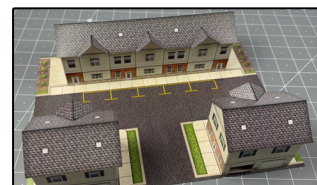
**Step 7** - After, touch up the cut edges with a gray marker. Flip over the wall so the white side is facing you. Grab the bottom garage door pieces, flip over and lay over the garage open section on the top. Use scotch tape to secure against the wall. Adjust until its how you like it.



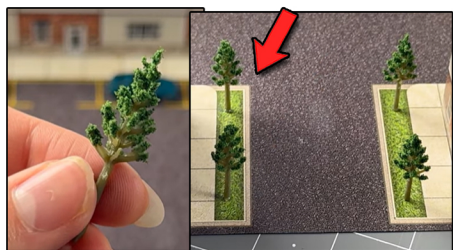
**Step 10** - Afterwards, collect all the dormer roofs. Score the white middle lines with a hobby knife and ruler, and fold downwards. Touch up with a dark watercolor marker. Repeat this step for all dormer roofs, put aside for later.



**STEP 13** - Make sure when gluing the side walls, to place hot glue behind also. Then secure the back wall on to the rest of the building. Once thats done, glue the correct garage illusion rooms inside, like shown above. Place the roof on top, locking it in, then securing the roof dormers on top by placing small amounts of hot glue underneath it.



**STEP 16**- Now we have all the buildings assembled, go to the next page to see whats left!



STEP 17- Then grab four trees included in the kit. Place the four right here like shown above. Use hot glue to secure. I recommend cutting a small piece off the end to create flat surface so its easier to secure against the base.



STEP 18- Afterwards, grab the optional add on driveways, and line them up with the correct side, can up slightly overlap the driveway bases right against each other. You can either secure the bases together, or leave them next to each other and take them off anytime you would like.

**GO TO THE LAST PAGE TO SEE THE FINAL RESULTS**



# ASSEMBLY INSTRUCTIONS

*Photo Real Scale Building Kit by*



**Townhouse  
Kit**



Front of Building



Left Side of Building



Right Side of Building



Rear of Building