



ASSEMBLY INSTRUCTIONS

Photo Real Scale Building Kit by **INNOVATIVE**
HOBBY SUPPLY

**Gas
Station**

READ ALL STEP BY STEP INSTRUCTIONS

- A new alternative to plastic form scale building models!
- Photo Real Scale Building kits may be the most realistic kits available!
- Great for use on model dioramas, slot car, and train track layouts!
- Designed using real building elements for the most realistic appearance



Footprint Dimensions

Model Base
8" x 11"

Gas Station Kit

All scale building kits offer many optional features, for a variety of creative ways to complete each project!

Cut out all components and place in a safe area and place all parts in a tray so you do not lose any.

Free replacement parts are available call: 866-712-4059



STEP 1 - Collect the correct tools.

For best results, we suggest you gather at least the most basic tools you will need to complete assembly. While you may find more tools that will help you achieve outstanding results, we suggest you start with the following: Hot glue gun, scissors, variety of water based colored markers, tweezers, straight edge rulers, hobby knife, instant setting high strength hobby glue Plus 4ea, Hot Glue Sticks

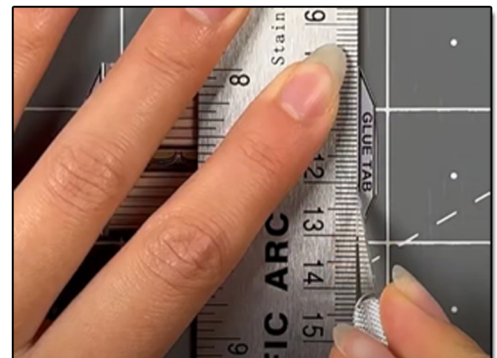


STEP 2 - Empty contents of the kit, carefully cut out all the individual parts to be assembled with a Scissors. The most precise cuts you can make will result in a dramatically better looking finished project. Use smooth long scissor strokes on the bigger parts.

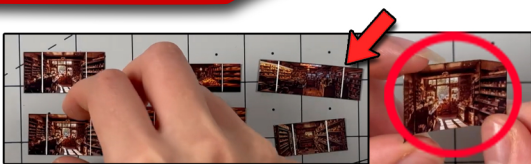
STEP 4 - Scoring. Using a Hobby Knife (see picture) and a straight-edge ruler, apply lighter Blade pressure onto the marked fold line on the part you wish to fold. Scoring along these lines to be bent makes bending all printed parts easier, and results in a much cleaner looking fold. Bend parts using the length of your straightedge ruler or a desk edge
Scoring is an essential skill. Practice on Scrap piece.



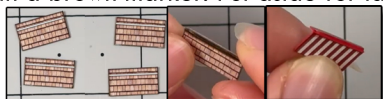
STEP 3 - With appropriate color markers, detail the edges of all the parts you cut out. This will result in a finely finished project once assembled.



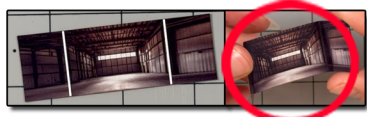
TIP: Look Ahead At All Photos For Extra Guidance



STEP 5 - With scale building kits, there is usually no correct place to begin. In this case, we'll start by prepping the illusion rooms, score the two white lines with a hobby knife and ruler, Fold the tabs slightly inwards. Touch up the scored seams with a brown marker. Put aside for later.



STEP 8 - Then grab awnings and score the white line. Gently fold the small tab downwards. Touch up the outer edges and scored seam with a corresponding watercolor marker.



STEP 11 - Grab the garage illusion room, and score the white lines. Fold the sides inwards. Touch up the seams with a dark marker.



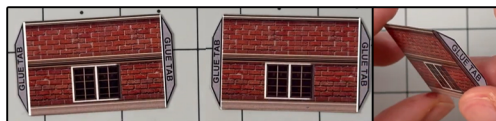
STEP 14 - Next, get rid of the inside part of the lower windows with a hobby knife and ruler, avoid cutting the outer window frames. Flip over so the white side is facing you. Grab the window material and cut it so it overlaps the window openings enough to secure it against the back of the wall with scotch tape.



STEP 17 - Afterwards, grab the auto supply front wall, remove the inside part of the lower windows. Flip over. And cut the window material so it fits the two window opening. Tape to secure.



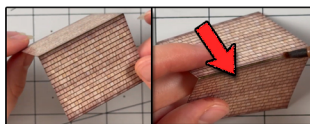
STEP 20 - Line up the gas station front wall to the correct base. Place hot glue behind the wall. Hold upwards until dry. Secure the side walls on to the front wall. Then glue the back wall on to the rest of building. Glue on to one glue tab at a time to avoid any unevenness.



STEP 6 - Afterwards, auto supply side walls, score the side glue tabs with a hobby knife and ruler. Fold inwards. Touch up the scored seams with a corresponding watercolor marker. Put aside for later.



STEP 9 - Afterwards, grab the general side walls, score the glue tabs and fold inwards, touch up the scored seams with a brown marker.



STEP 12 - Then grab the auto shop roof, and score the middle white line with a hobby knife and ruler. Fold the two sides downwards, and touch up the scored seam and outer edges with a brown watercolor marker.



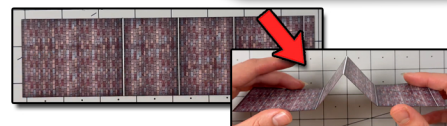
STEP 15 - Grab the garage door we cut out earlier. Cut to desired height for the open garage door. Use the bottom part. Tape it evenly behind the garage opening. Flip over and see the final result.



STEP 18 - Grab the generals front wall and do the same thing you did in step 17 for the four lower windows.



STEP 21 - Grab the illusion room and place it behind the garage door open, secure with hot glue. Then place the roof on top. Make sure the longest tab on the roof is facing the left. Secure, by placing small amounts of hot glue underneath.



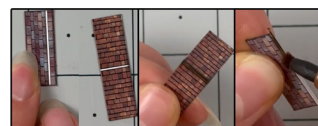
Step 7 - Next collect the gas station roof, score all of the white lines, fold the middle line, the two tabs downwards. Then fold the two outside tabs upwards straight



Step 10 - Now grab the gas station side walls, and score the glue tabs with a hobby knife and ruler, touch up with a corresponding marker.



STEP 13 - Now the shed and score all white lines, glue into a cuboid. Then grab the gas station front wall. Cut out the garage using scissors for the sides and the top a hobby knife and a ruler. Avoid cutting the wall and the garage frame. Keep the garage door.



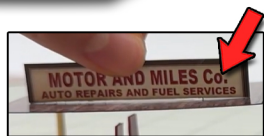
STEP 16 - For this step, grab the gas station awning and small shed roof. Score the white lines and fold. Touch up with brown marker.



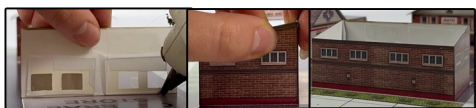
STEP 19 Using a dark marker, color the area on the gas station base where the garage opening will be, an inch back. Like shown in the circled area above.



STEP 22 - Afterwards, secure the gas pumps on the left side of the base like shown in the photo above. Then grab the roof supporters included in the kit. And cut them the height of the gas station. After secure them underneath the outer left side of the room with hot glue.



STEP 22- Then grab the motor and miles sign, and place it on top of the left side of the roof with hot glue.



STEP 25- Then secure the general stores front wall on to the correct base, then the side walls, and back wall. Use hot glue to secure.



STEP 28- Lastly, grab the gas station awning and secure it above the gas sign using hot glue.



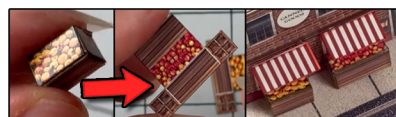
STEP 23- Afterwards, grab the auto supply front wall and secure it on to the correct base.



STEP 26- Place the illusion rooms behind the window, use hot glue to secure to base. Place the roof evenly on top. Moving forward, place the red and white striped awnings above the lower four windows on the front wall.



STEP 24- Then secure the side walls and back wall on to the rest of the building. After, place the two illusion rooms behind the front windows. Place the roof on top evenly.



STEP 27- Next, grab the crates and score all the white lines with a hobby knife and ruler. Fold into a cuboid. Then glue using hot glue. Place by the general store windows like shown in the photo above.

GO TO THE LAST PAGE TO SEE THE FINAL RESULTS

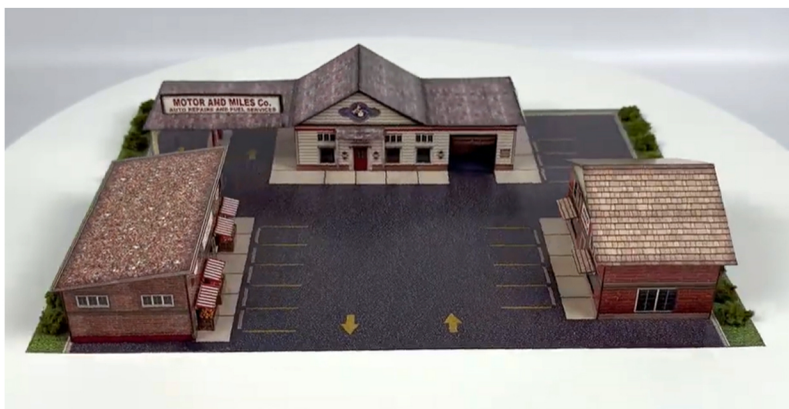


ASSEMBLY INSTRUCTIONS

Photo Real Scale Building Kit by

INNOVATIVE
HOBBY SUPPLY

**Gas
Station**



Front of Buildings



Left Side of Building



Right Side of Building



Rear of Buildings