



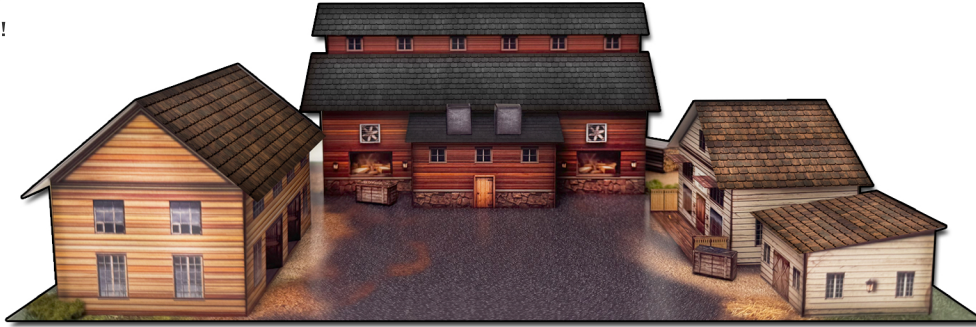
ASSEMBLY INSTRUCTIONS

Photo Real Scale Building Kit by **INNOVATIVE** HOBBY SUPPLY

Sawmill

READ ALL STEP BY STEP INSTRUCTIONS

- A new alternative to plastic form scale building models!
- Photo Real Scale Building kits may be the most realistic kits available!
- Great for use on model dioramas, slot car, and train track layouts!
- Designed using real building elements for the most realistic appearance



Footprint Dimensions

Model Base
8" x 11"

Sawmill
Town Kit

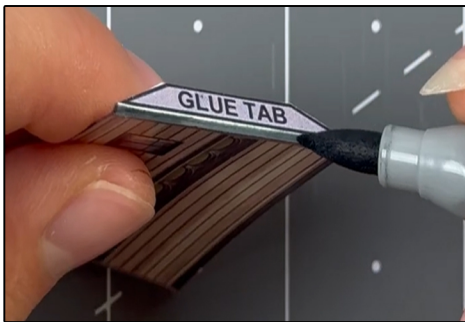
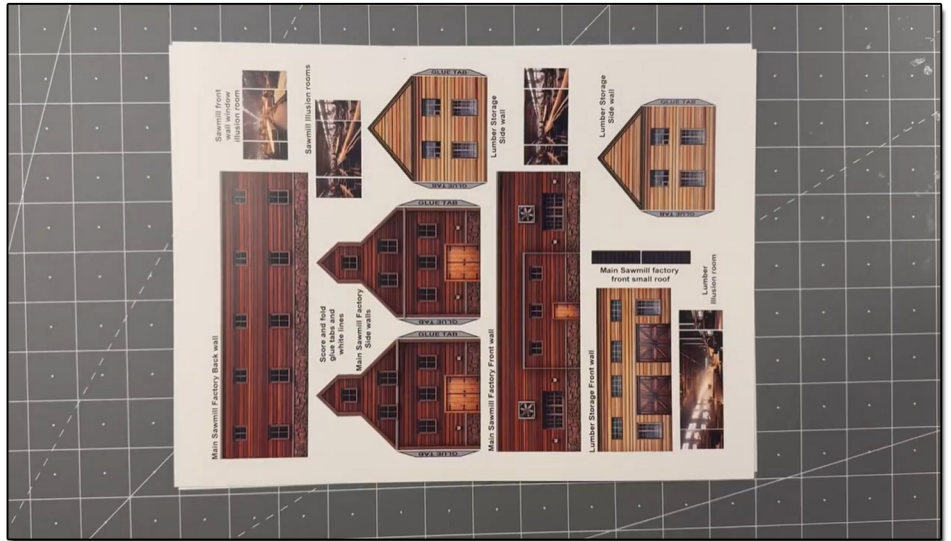
All scale building kits offer many optional features, for a variety of creative ways to complete each project!

Cut out all components and place in a safe area and place all parts in a tray so you do not lose any.

Free replacement parts are available call: 866-712-4059



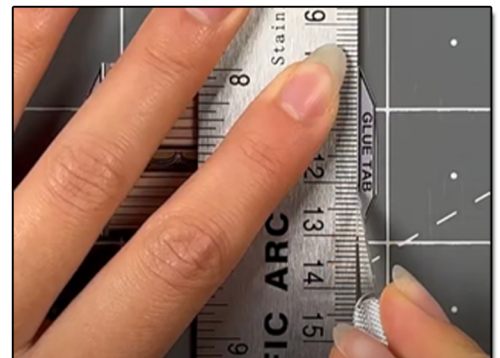
STEP 1 - Collect the correct tools. For best results, we suggest you gather at least the most basic tools you will need to complete assembly. While you may find more tools that will help you achieve outstanding results, we suggest you start with the following: Hot glue gun, scissors, variety of water based colored markers, tweezers, straight edge rulers, hobby knife, instant setting high strength hobby glue Plus 4ea, Hot Glue Sticks



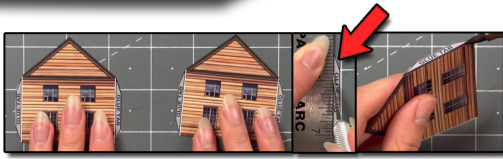
STEP 3 - With appropriate color markers, detail the edges of all the parts you cut out. This will result in a finely finished project once assembled.

STEP 2 - Empty contents of the kit, carefully cut out all the individual parts to be assembled with a Scissors. The most precise cuts you can make will result in a dramatically better looking finished project. Use smooth long scissor strokes on the bigger parts.

STEP 4 - Scoring. Using a Hobby Knife (see picture) and a straight-edge ruler, apply lighter Blade pressure onto the marked fold line on the part you wish to fold. Scoring along these lines to be bent makes bending all printed parts easier, and results in a much cleaner looking fold. Bend parts using the length of your straightedge ruler or a desk edge
Scoring is an essential skill. Practice on Scrap piece.



TIP: Look Ahead At All Photos For Extra Guidance



STEP 5 - With scale building kits, there is usually no correct place to begin. In this case, we'll start by prepping the lumber storage side walls. Score the glue tabs on both sides with a hobby knife and ruler. After scoring, fold the tabs inwards. Then touch up the scored seams and the outer edges with a corresponding watercolor marker. Put aside for later.



STEP 8 - Then grab awning and score the white line. Gently fold the small tab downwards. Touch up the outer edges and scored seam with a brown watercolor marker.



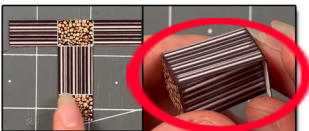
STEP 11 - Grab the sawmills front pop out wall and score the two white lines and the glue tabs with a hobby knife and ruler. Fold everything inwards like shown in the photo above. Touch up the scored edges with a brown marker.



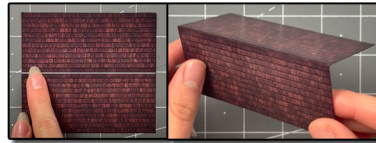
STEP 14 - For this step, grab the sawmill top roof, and score the white middle line. Fold downwards. Touch up the scored seam with a black marker.



STEP 16 - Afterwards, grab mill's workers side walls, score the side glue tabs with a hobby knife and ruler. Fold inwards. Touch up the scored seams with a corresponding watercolor marker. Put aside for later.



STEP 19 - Grab the log pile, score the white lines. Fold into a cuboid, touch up the seams with a brown marker. Secure as a cuboid with hot glue.



STEP 6 - Afterwards, grab the lumber storage roof, and score the middle white line with a hobby knife and ruler. Fold the two sides downwards, and touch up the scored seam and outer edges with a brown watercolor marker.



STEP 9 - On to the next step, grab the sawmill factory's side walls. Score the glue tabs, and fold. Touch up the scored seams and outer edges with a brown marker.



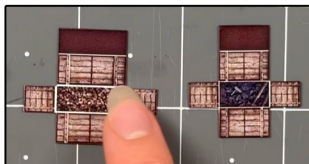
STEP 12 - After, grab the lumber storage front wall. Open the two doors on the wall with the same steps in step 10.



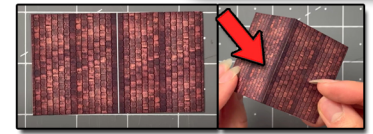
STEP 15 - Now gather the illusion rooms, score the two white lines with a hobby knife and ruler, Fold the tabs slightly inwards. Touch up the scored seams with a brown marker. Put aside for later.



STEP 17 - Then grab the sheds side walls and do the same thing, score the glue tabs, fold inwards, and touch up. Put aside for later.



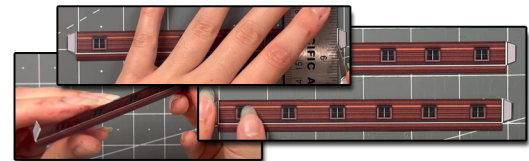
STEP 20 - Now grab both crates and score all white lines with a hobby knife and ruler. touch up scored seams and outer edges with a brown marker. Fold into a cuboid. Secure with hot glue. Repeat for both, put aside for later.



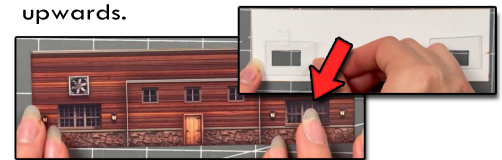
STEP 7 - Next collect the Mill's workers roof, and score the middle white line with a hobby knife and ruler. Fold the two sides downwards, and touch up the scored seam and outer edges with a brown watercolor marker.



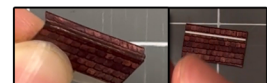
STEP 10 - Now lets open the doors on the side walls. Cut with a pair of scissors the middle of the door. Avoid cutting the door frames. Score the sides of the doors where the hinges are with a hobby knife and ruler. Cut the top of the door with a hobby knife and ruler. Then gently push the doors open. Touch up the score seams and the cut edges with a brown marker.



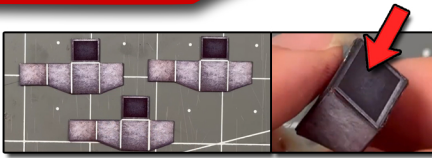
STEP 13 - Next, grab the sawmill top side walls and gently score the white long line, then score the two side tabs. Fold the tabs inwards. Fold the long tab at a 45 angle upwards.



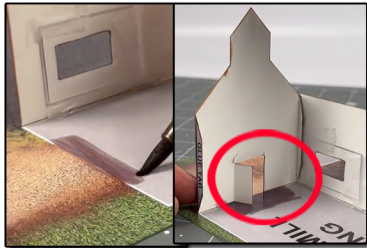
STEP 18 - For the sawmills front wall, remove inside part of the two lower big windows with a hobby knife and ruler. Avoid cutting the white outside frames and the wall at all times. Then flip over so the white side is facing you. Grab the window material included in the kit. And cut two pieces so it overlaps the window openings enough to secure it against the back of the wall with scotch tape. Make sure the tape is not visible from the front side.



STEP 21 - grab the smaller awning, score the white line, fold downwards and touch up with a brown marker. Put aside for later.



STEP 22- Then grab all the smokestacks and score all the white lines. Fold into a cuboid, touch up edges with a black marker, secure into a cuboid with hot glue.



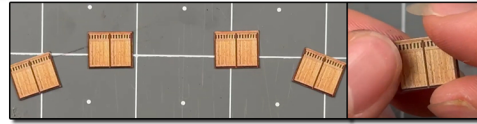
STEP 25- Before securing the side walls on, color the base where the side wall doors will be with a brown marker about an inch towards the middle. Use the photo above to better understand.



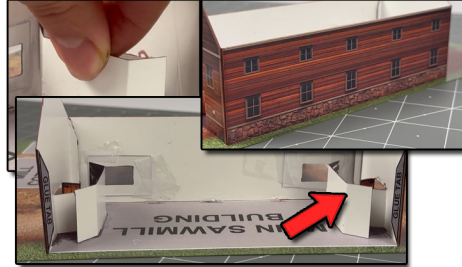
STEP 28- Now secure the pop out roof on to the front of the base, then place the roof on top.



STEP 31- For the last step, glue the crates anywhere you would like. Including the log pile. Secure with hot glue. And place landscape moss around the base to create even more realism!



STEP 23- Afterwards, grab the fences, and glue a pair on to the backs of each other with hot glue. Repeat for the other one.



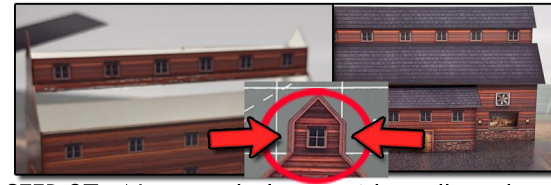
STEP 26- Secure the side walls on to the front wall using the glue tabs. Line up evenly. Then secure the side walls on to base, line up, place hot glue behind. After secure the back wall on to the rest. Place the door illusion rooms behind the opened doors like shown above.



STEP 29- On to the next step, lets assemble the cottage. Secure the front wall on to the correct base. Then the side walls, and the back wall. Glue the back wall on one glue tab at a time to avoid any unevenness. Once all the walls are attached, place the awnings on the windows and the roof.



STEP 24- Now its time to secure the sawmill's front wall. Line it up like the photo above. Put small amounts of hot glue behind the wall. Hold upwards until dry.



STEP 27- Next, grab the top side walls and glue the glue tabs on the top side walls evenly with the main side wall, located in the circled photo above. Line up evenly. Use hot glue to secure. Then once both top side walls are secure. Use the long tab on the top side walls that are folded a 45 degree angle upwards to secure one side of the main roof on. Place glue along the tab, and place one a main roof evenly on top. Make sure before gluing the shingles are facing the correct way. Glue the other side. Afterwards place the top roof evenly on top.



STEP 30- Assemble the little shed next to the finished mill's workers cottage. Then lets assemble the lumber storage building. Color the base where the front walls door openings would be with a brown marker. Then secure the front wall on first, then both side walls. After dried, secure the back wall on. Place the illusion rooms right behind the door openings. Afterwards evenly place the roof on top.



ASSEMBLY INSTRUCTIONS

Photo Real Scale Building Kit by



Sawmill



Front of Buildings



Left Side of Building



Right Side of Building



Rear of Buildings