



ASSEMBLY INSTRUCTIONS

Photo Real Scale Building Kit by **INNOVATIVE**
HOBBY SUPPLY

**Bank
and
Hotel**

READ ALL STEP BY STEP INSTRUCTIONS

- A new alternative to plastic form scale building models!
- Photo Real Scale Building kits may be the most realistic kits available!
- Great for use on model dioramas, slot car, and train track layouts!
- Designed using real building elements for the most realistic appearance



Footprint Dimensions

Model Base
8" x 11"

Bank and Hotel

All scale building kits offer many optional features, for a variety of creative ways to complete each project!

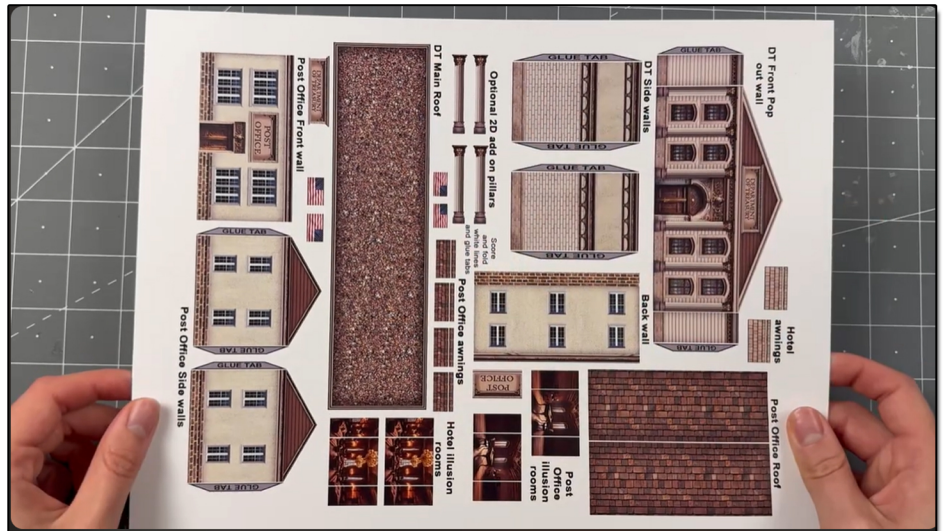
Cut out all components and place in a safe area and place all parts in a tray so you do not lose any.

Free replacement parts are available call: 866-712-4059



STEP 1 - Collect the correct tools.

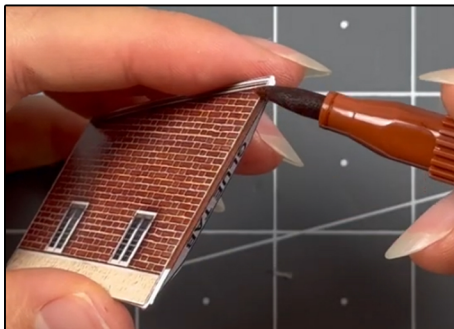
For best results, we suggest you gather at least the most basic tools you will need to complete assembly. While you may find more tools that will help you achieve outstanding results, we suggest you start with the following: Hot glue gun, scissors, variety of water based colored markers, tweezers, straight edge rulers, hobby knife, instant setting high strength hobby glue Plus 4ea, Hot Glue Sticks



STEP 2 - Empty contents of the kit, carefully cut out all the individual parts to be assembled with a Scissors. The most precise cuts you can make will result in a dramatically better looking finished project. Use smooth long scissor strokes on the bigger parts.

STEP 4 - Scoring. Using a Hobby Knife (see picture) and a straight-edge ruler, apply lighter Blade pressure onto the marked fold line on the part you wish to fold. Scoring along these lines to be bent makes bending all printed parts easier, and results in a much cleaner looking fold.

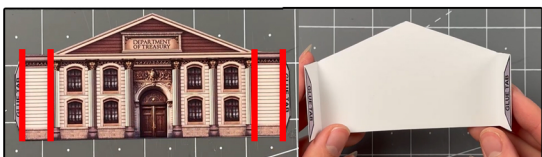
Bend parts using the length of your straightedge ruler or a desk edge
Scoring is an essential skill. Practice on Scrap piece.



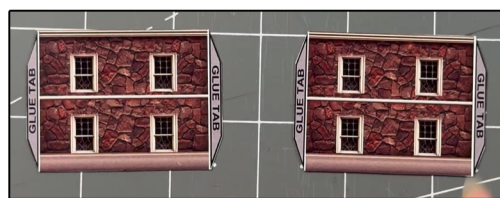
STEP 3 - With appropriate color markers, detail the edges of all the parts you cut out. This will result in a finely finished project once assembled.



TIP: Look Ahead At All Photos For Extra Guidance



STEP 5 - With scale building kits, there is usually no correct place to begin. In this case, we'll start by prepping the banks front pop out wall. Score the white lines and the glue tabs with a hobby knife and ruler on both sides. Look at the image above with the red lines to see where to score. After scoring fold the two side tabs 90 degrees inwards from the front wall. Fold the glue tabs 90 degrees inwards from the side walls. Touch up the white outer edges and scored seams with a brown watercolor marker. Put aside for later.



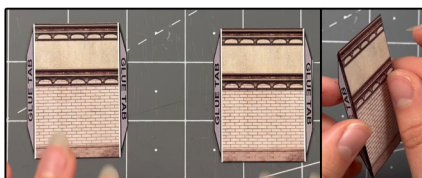
STEP 8 - Then grab the hotel side walls. With a hobby knife and ruler score the two glue tabs on both sides. Fold them 90 degrees inwards, and touch up the white outer edges and scored seams with a corresponding watercolor marker. Repeat these steps to both side walls. Put aside for later.



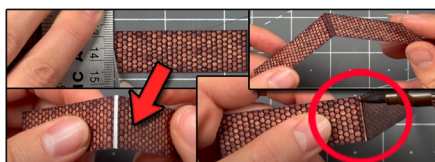
STEP 11 - Grab all of the illusion rooms and score the two white lines with a hobby knife and ruler. Fold the two sides slightly inwards. Afterwards touch up with a brown watercolor marker. Repeat this step for all illusion rooms. Put aside for later.



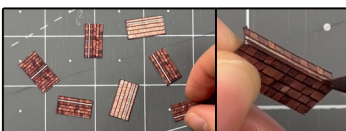
STEP 16 - Afterwards, grab the banks front pop out wall, place hot glue on to ONE glue tab at a time. Line up to the original art on the front main wall. After thats dry, glue the other side. It should look like the image above on the right side.



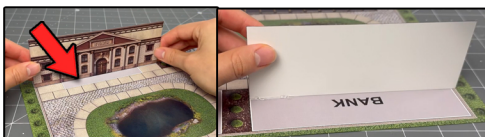
STEP 6 - Grab the banks side walls and score the glue tabs on both sides with a hobby knife and ruler. Fold the glue tabs inwards. After touch up the white outer edges and scored seams with a brown watercolor marker. Put aside for later.



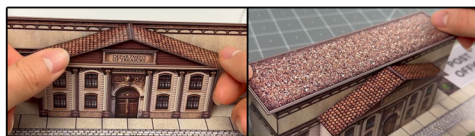
STEP 9 - On to the next step, grab the Banks front pop out roof and score the white middle line with a hobby knife and ruler. Fold the two tabs slightly downwards and touch up the white outer edges and scored seam with a brown watercolor marker. Put aside for later.



STEP 12 - After, grab all of the awnings and tiny roof. Score all of the white lines with a hobby knife and ruler. Fold the small tab downwards. Touch up outer edges and scored seam with a brown marker. Put aside for later.



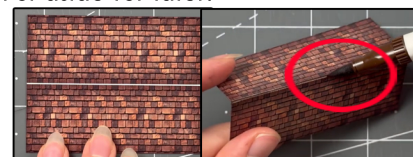
STEP 14- For this step, gather the base and the banks main front wall. Line it up on the banks bases white line, facing the pond on the base. Place small amounts of hot glue behind the wall. Hold upwards until dry.



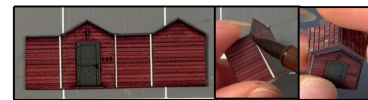
STEP 17- Then grab pop out roof and place it on top of the pop out wall. After place the main banks roof on top evenly Secure both to building by placing a tiny amount of hot glue underneath in two areas.



Step 7 - Next collect the post offices side walls and score the glue tabs on both sides with a hobby knife and ruler. Fold the glue tabs inwards. After touch up the white outer edges and scored seams with a brown watercolor marker. Put aside for later.



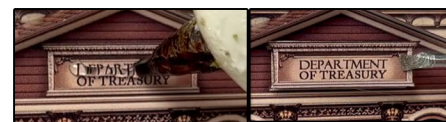
Step 10 - Now grab post office roof. With a hobby knife and ruler score the white middle line, fold the sides slightly downwards, and touch up the white outer edges and scored seam with a corresponding watercolor marker. Put aside for later.



STEP 13 - Next, Porty potty and score all of the white lines with a hobby knife and ruler. Fold tabs into a cuboid. Secure with hot glue. Then secure the tiny roof on top. Put aside for later.



STEP 15- Now connect the bank side walls on to the front wall using the glue tabs and hot glue. Line up the walls evenly together. Line up side wall on to base after, and place hot glue behind. Hold until dry. Then secure the back wall on to the rest of the building, gluing one side at a time to avoid any unevenness.



STEP 18- Next, grab the 2D Department of treasury sign. Place glue on tot he original sign. Then place the add on sign evenly on top. Adds a nice realistic touch.



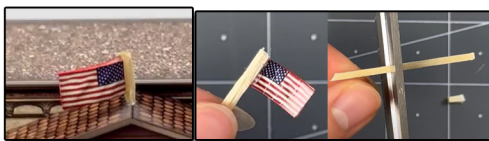
STEP 19- Create bushes around the circled area in the image above. Using the landscape moss and hot glue.



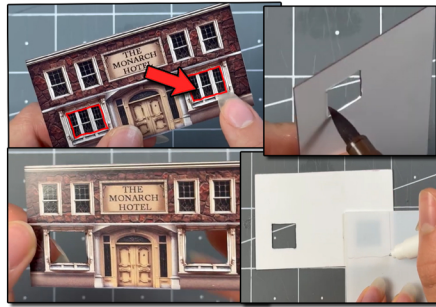
STEP 22- Repeat the same exact steps in steps 20 and 21 to remove the inside parts of the post office lower windows. And how to apply window material behind the wall.



STEP 25- Afterwards, grab the mini tree included, and place anywhere you would like. Secure with a tiny amount of hot glue.



STEP 28- Then grab the wooden flag post, cut to desired height. And grab both side of the American flag. Glue the backs of each other together using a small amount of hot glue. Attach flag to the post. And place anywhere.



STEP 20- Now lets prep the hotels front walls lower windows. Remove the inside part of the lower windows using a hobby knife and ruler. Avoid cutting the walls at all times. Look at the top left image above to see where to cut (red traced area). After removing the inside part, touch up the edges with a brown marker. Flip over so the white side is facing you. Trace the window material on top to the correct size.



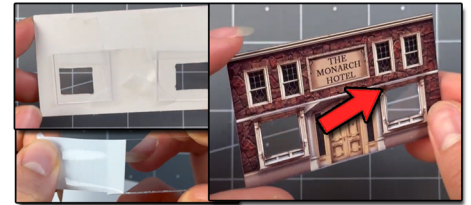
STEP 23- After secure the front office wall on to the office base. Place hot glue behind it. Hold upwards until dry. Secure the side walls. Then secure the back wall. Secure one glue tab at a time.



STEP 26- Next glue the hotels front wall on to the hotel base. Then glue the side walls on to the front wall and base. Glue the back wall on to the rest of the building using hot glue. Glue one side at a time.



STEP 29- Create bushes on to the base located on the left and right side using the landscape moss included in the kit. Afterwards you can glue small amounts of landscape moss around the pond if you would like, to add even more realism to the kit.



STEP 21- The window material should be big enough so it overlaps the windows openings but small enough so it does not touch the sides of the wall. Cut to correct size, and remove both sides of wrapper until see through. Place on top of openings evenly. And secure scotch tape, make sure the tape is not visible from the front side.



STEP 24- Then grab the post office illusion rooms and secure them right behind the post office front windows. After place the post office roof evenly on top. Secure with hot glue.



STEP 27- Create bushes on to the base located on the left side using the left over landscape moss. After that's done glue the fences against the churches side and school side. Connect the fences together using a small amount of hot glue.

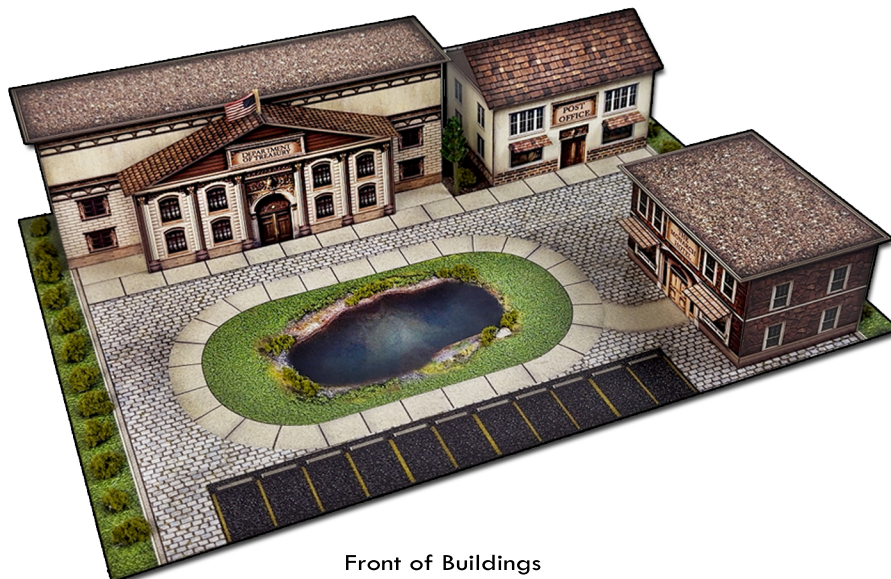


ASSEMBLY INSTRUCTIONS

Photo Real Scale Building Kit by

INNOVATIVE
HOBBY SUPPLY

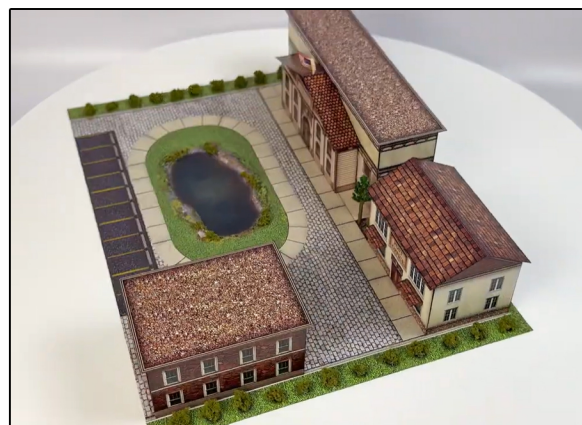
**Bank
and
Hotel**



Front of Buildings



Left Side of Building



Right Side of Building



Rear of Buildings