



# ASSEMBLY INSTRUCTIONS

Photo Real Scale Building Kit by **INNOVATIVE**  
HOBBY SUPPLY

**Church  
and  
School**

## READ ALL STEP BY STEP INSTRUCTIONS

- A new alternative to plastic form scale building models!
- Photo Real Scale Building kits may be the most realistic kits available!
- Great for use on model dioramas, slot car, and train track layouts!
- Designed using real building elements for the most realistic appearance



## Footprint Dimensions

Model Base  
8" x 11"

Church and  
School

*All scale building kits offer many optional features, for a variety of creative ways to complete each project!*

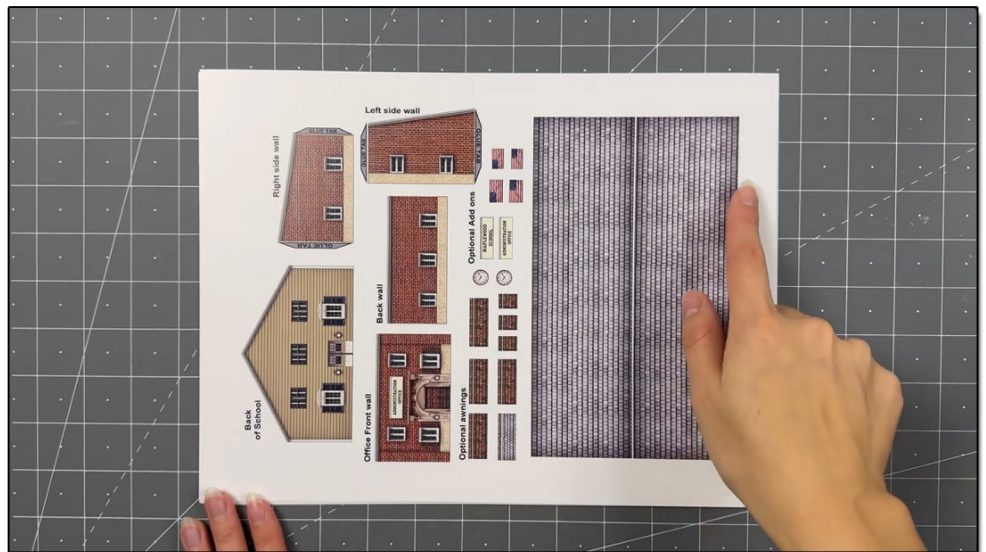
**Cut out all components and place in a safe area and place all parts in a tray so you do not lose any.**

Free replacement parts are available call: 866-712-4059



## STEP 1 - Collect the correct tools.

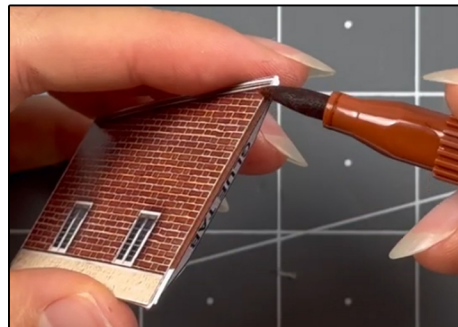
For best results, we suggest you gather at least the most basic tools you will need to complete assembly. While you may find more tools that will help you achieve outstanding results, we suggest you start with the following: Hot glue gun, scissors, variety of water based colored markers, tweezers, straight edge rulers, hobby knife, instant setting high strength hobby glue Plus 4ea, Hot Glue Sticks



**STEP 2 -** Empty contents of the kit, carefully cut out all the individual parts to be assembled with a Scissors. The most precise cuts you can make will result in a dramatically better looking finished project. Use smooth long scissor strokes on the bigger parts.

**STEP 4 - Scoring.** Using a Hobby Knife (see picture) and a straight-edge ruler, apply lighter Blade pressure onto the marked fold line on the part you wish to fold. Scoring along these lines to be bent makes bending all printed parts easier, and results in a much cleaner looking fold.

Bend parts using the length of your straightedge ruler or a desk edge  
Scoring is an essential skill. Practice on Scrap piece.

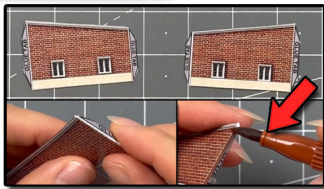


**STEP 3 -** With appropriate color markers, detail the edges of all the parts you cut out. This will result in a finely finished project once assembled.





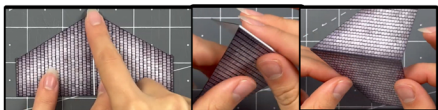
**TIP: Look Ahead At All Photos For Extra Guidance**



**STEP 5** - With scale building kits, there is usually no correct place to begin. In this case, we'll start by prepping the Administration office side walls. Score both of glue tabs with a hobby knife and ruler. After scoring, fold the tabs inwards. Touch up the outer edges and white scored seams with a corresponding watercolor marker.



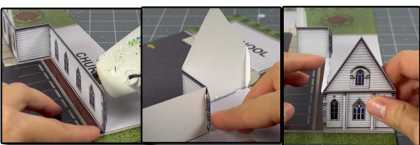
**STEP 8** - Then grab church front wall and right front wall, score all of the glue tabs on the walls with a hobby knife and ruler. After scoring, fold the tabs inwards. Touch up the outer edges and white scored seams with a corresponding watercolor marker.



**STEP 11** - Next collect church dormer roof, and score the white middle line with a hobby knife and ruler. After scoring, fold the tabs downwards. Touch up the outer edges and white scored seam with a corresponding watercolor marker.



**STEP 14**- For this step, gather the garden shed and porty potty, score the white lines. Fold them into a cuboid. Touch up the scored seams with a marker. Place the correct roof on top. Secure with hot glue.



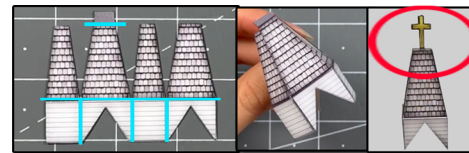
**STEP 17**- Then secure the front facing long wall against the front left wall with hot glue. Line up with the white line on the base. After connect the right side wall on to the front facing long wall.



**STEP 6** - Grab both of the school side walls. Score both of glue tabs with a hobby knife and ruler. After scoring, fold the tabs inwards. Touch up the outer edges and white scored seams with a corresponding watercolor marker. Put aside for later.



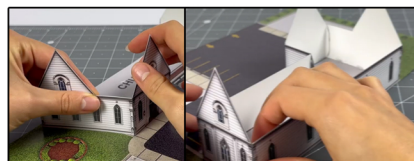
**STEP 9** - On to the next step, grab the front facing long wall and the front left wall. Score all of the glue tabs on the walls with a hobby knife and ruler. After scoring, fold the tabs inwards. Touch up the outer edges and white scored seams with a corresponding watercolor marker.



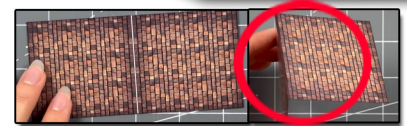
**STEP 12** - After, grab top part of the church. Score all of the white lines with a hobby knife and ruler, look at the image above to see where (the blue lines). Fold the sides into a cuboid. Fold the roof sections slightly inwards. Grab both sides of the cross, flip over so the white side is facing you. Color the backs with a black marker. After glue the back of the crosses together with hot glue. Connect the top part of the church all together slowly connecting one side and section at a time. Then secure the cross on top.



**STEP 15**- Gather all of the awnings and score the white lines. Fold tabs downwards. Touch up with a matching colored marker. And put aside for later.



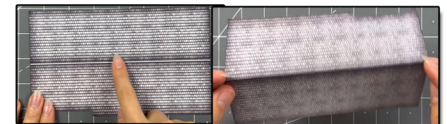
**STEP 18**- Next, connect the left side wall on to the front walls glue tab, lining them up evenly together. After connect the back wall on to the rest of the building. Gluing one glue tab at a time to avoid any unevenness.



**Step 7** - Next collect school roof, and score the white middle line with a hobby knife and ruler. After scoring, fold the tabs downwards. Touch up the outer edges and white scored seam with a corresponding watercolor marker.



**Step 10** - Now grab left side wall, and score the single glue tab with a hobby knife and ruler. After scoring, fold the tab inwards. Touch up the outer edges and white scored seam with a corresponding watercolor marker.



**STEP 13** - Next, grab the church main roof. Score the white middle line with a hobby knife and ruler. After scoring, fold the tabs downwards. Touch up the outer edges and white scored seam with a corresponding watercolor marker.



**STEP 16** - Now grab the church front wall and secure at the front of the church base indent. Line up with the white line. Place hot glue behind to secure to base. Then grab the front left wall. And evenly secure it against the front wall.



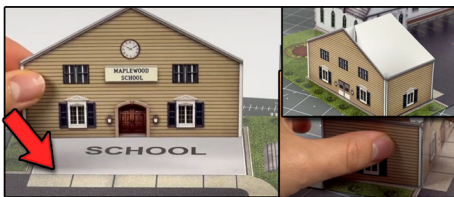
**STEP 19**- Grab the gray four awning roofs and place hot glue inside the top parts and place it on top of the front facing long wall windows.



STEP 20- Now the church main roof and lock it in with the building. Secure by placing a small amount of hot glue underneath the roof on both sides. Then place the dormer on top of the front entry area. Secure. Place the top of the church part on to the dormer.



STEP 23- After secure the front office wall on to the office base. Place hot glue behind it. Hold upwards until dry. Secure the side walls. Then secure the back wall. Secure one glue tab at a time.



STEP 21- After secure the front school wall on to the school base. Place hot glue behind it. Hold upwards until dry. Secure the side walls. Then secure the back wall. Secure one glue tab at a time.



STEP 24- Create bushes around the circled area in the image above. Using the landscape moss and hot glue. Then grab both of the matching sized flags and glue them on to the backs of each other. Grab the flag post material, and glue the flag on to the top end of the flag post using hot glue. Secure it in the middle of the bushes.



STEP 22- Place the roof on top of the school, secure with hot glue. Then place hot glue on to the original school sign. Afterwards, place the 2D add on school sign on top evenly. Now glue the long brown awnings above the front and back doors.



STEP 25- Create bushes on to the base located on the left side using the left over landscape moss. After that's done glue the fences against the churches side and school side. Connect the fences together using a small amount of hot glue.

# GO TO THE LAST PAGE TO SEE THE FINAL RESULTS





# ASSEMBLY INSTRUCTIONS

*Photo Real Scale Building Kit by*

**INNOVATIVE**  
HOBBY SUPPLY

**Church  
and  
School**



Front of Buildings



Left Side of Building



Right Side of Building



Rear of Buildings