



# ASSEMBLY INSTRUCTIONS

Photo Real Scale Building Kit by **INNOVATIVE**  
HOBBY SUPPLY

**Starter  
Small  
Town**

## READ ALL STEP BY STEP INSTRUCTIONS

- A new alternative to plastic form scale building models!
- Photo Real Scale Building kits may be the most realistic kits available!
- Great for use on model dioramas, slot car, and train track layouts!
- Designed using real building elements for the most realistic appearance



## Footprint Dimensions

Model Base  
8" x 11"

Starter Small  
Town Kit

*All scale building kits offer many optional features, for a variety of creative ways to complete each project!*

**Cut out all components and place in a safe area and place all parts in a tray so you do not lose any.**

Free replacement parts are available call: 866-712-4059



## STEP 1 - Collect the correct tools.

For best results, we suggest you gather at least the most basic tools you will need to complete assembly. While you may find more tools that will help you achieve outstanding results, we suggest you start with the following: Hot glue gun, scissors, variety of water based colored markers, tweezers, straight edge rulers, hobby knife, instant setting high strength hobby glue Plus 4ea, Hot Glue Sticks

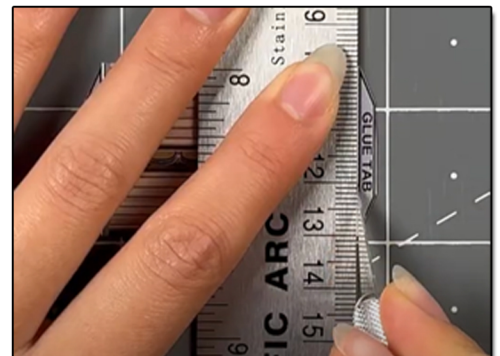


**STEP 2 -** Empty contents of the kit, carefully cut out all the individual parts to be assembled with a Scissors. The most precise cuts you can make will result in a dramatically better looking finished project. Use smooth long scissor strokes on the bigger parts.

**STEP 4 - Scoring.** Using a Hobby Knife (see picture) and a straight-edge ruler, apply lighter Blade pressure onto the marked fold line on the part you wish to fold. Scoring along these lines to be bent makes bending all printed parts easier, and results in a much cleaner looking fold. Bend parts using the length of your straightedge ruler or a desk edge  
Scoring is an essential skill. Practice on Scrap piece.

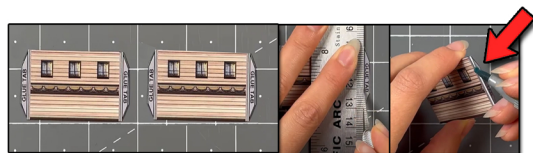


**STEP 3 -** With appropriate color markers, detail the edges of all the parts you cut out. This will result in a finely finished project once assembled.





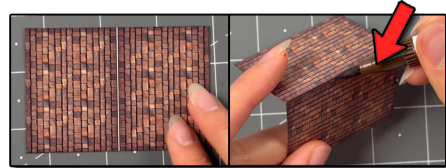
**TIP: Look Ahead At All Photos For Extra Guidance**



**STEP 5** - With scale building kits, there is usually no correct place to begin. In this case, we'll start by prepping the saloon side walls. With a hobby knife and ruler score the two glue tabs on both sides. Fold them 90 degrees inwards, and touch up the white outer edges and scored seams with a corresponding watercolor marker. Repeat these steps to both side walls. Put aside for later.



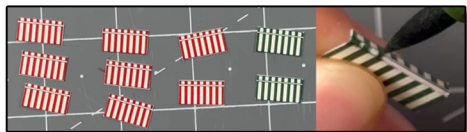
**STEP 8** - Then grab the tavern side walls. With a hobby knife and ruler score the two glue tabs on both sides. Fold them 90 degrees inwards, and touch up the white outer edges and scored seams with a corresponding watercolor marker. Repeat these steps to both side walls. Put aside for later.



**STEP 11** - Grab the barber shop roof. With a hobby knife and ruler score the white middle line, fold the sides slightly downwards, and touch up the white outer edges and scored seam with a corresponding watercolor marker. Put aside for later.



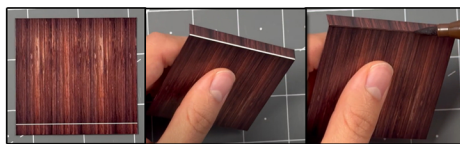
**STEP 14**- For this step, gather saloon illusion rooms, score the two white lines with a hobby knife and ruler, Fold the tabs slightly inwards. Touch up the scored seams with a brown marker. Put aside for later.



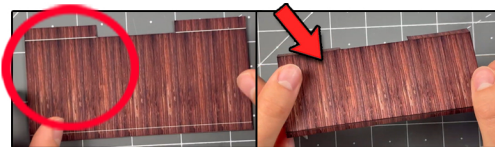
**STEP 17**- Then grab all of the striped awnings, score the white line with a hobby knife and ruler, fold the small tab downwards. Touch up with a corresponding marker. Repeat this step to all of the awnings.



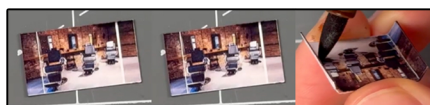
**STEP 6** - Grab the Mercantile side walls. With a hobby knife and ruler score the two glue tabs on both sides. Fold them 90 degrees inwards, and touch up the white outer edges and scored seams with a corresponding watercolor marker. Repeat these steps to both side walls. Put aside for later.



**STEP 9** - On to the next step, grab the mercantile roof. With a hobby knife and ruler score the white line, fold the small tab slightly downwards, and touch up the white outer edges and scored seam with a corresponding watercolor marker. Put aside for later.



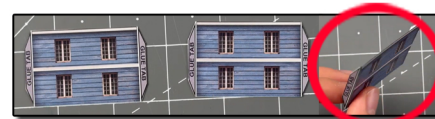
**STEP 12** - After, grab the saloon roof. Score the two small tabs white lines and the lone white line on the other side with a hobby knife and ruler. Gently fold the three tabs slightly downwards. Touch up the white outer edges and scored seams with a brown watercolor marker.



**STEP 15**- Now gather the barber shop illusion rooms, score the two white lines with a hobby knife and ruler, Fold the tabs slightly inwards. Touch up the scored seams with a brown marker. Put aside for later.



**STEP 18**- Next, grab the barber shop front wall. Cut out the inside part of the two lower front windows out with a hobby knife and ruler. Avoiding cutting the window frames at all times. Do not force the inside piece out, flip over to see where you need to cut more of. Touch up the inside edges of the windows with a gray marker.



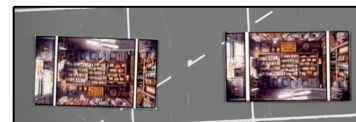
**Step 7** - Next collect the barber shop side walls. With a hobby knife and ruler score the two glue tabs on both sides. Fold them 90 degrees inwards, and touch up the white outer edges and scored seams with a corresponding watercolor marker. Repeat these steps to both side walls. Put aside for later.



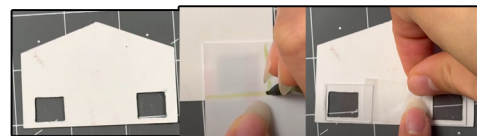
**Step 10** - Now grab tavern roof. With a hobby knife and ruler score the white middle line, fold the sides slightly downwards, and touch up the white outer edges and scored seam with a corresponding watercolor marker. Put aside for later.



**STEP 13** - Next, grab saloon and tavern awnings, score the white lines with a hobby knife and ruler. Fold the small tab downwards. Touch up the outer edges and scored seams with brown marker. Put aside for later.



**STEP 16** - Afterwards, grab the mercantile illusion rooms, score the two white lines with a hobby knife and ruler, Fold the tabs slightly inwards. Touch up the scored seams with a brown marker. Put aside for later.

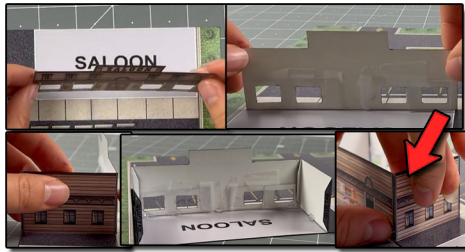


**STEP 19**- Flip over the wall so the white side is facing you. Grab the window material. Trace how big it needs to be. Big enough to overlap the windows openings, small enough so it does not touch the outer sides. Cut with scissors. Unwrap both sides, until see through. Place on top evenly. Secure with scotch tape.

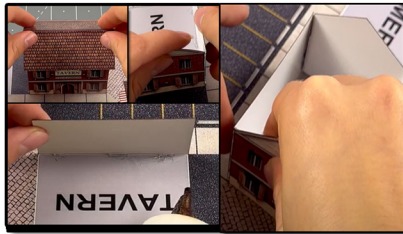




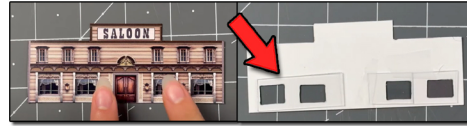
**STEP 20-** Now grab the mercantile front wall. Repeat steps 18 and 19 for the front wall. Remove the inside part of the lower windows. Touch up. Flip over and apply cut window material over securing with tape. Put aside for later.



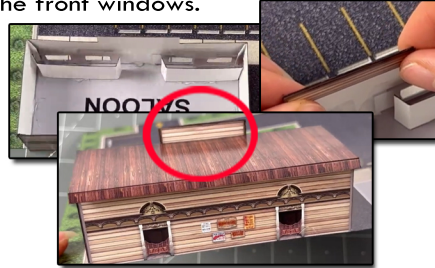
**STEP 23-** Now secure the saloon front wall on to the saloon base, facing the sidewalk side. Line it up with the white line. Place hot glue behind the wall. Hold upwards until dry. Glue the side walls on to the front wall using the glue tab. Then glue the back wall on, gluing one side at a time to avoid any unevenness.



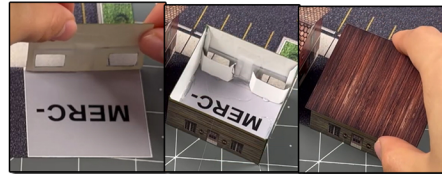
**STEP 26-** After, grab the tavern front wall secure the on the base so it faces the sidewalk side. Line it up with the white line. Place hot glue behind the wall. Hold upwards until dry. Glue the side walls on to the front wall using the glue tab. Then glue the back wall on, gluing one side at a time to avoid any unevenness. Then place the roof on top and secure.



**STEP 21-** After grab the saloon front wall. And repeat the same steps from 18 and 19 to remove the four lower inside parts of the front windows.



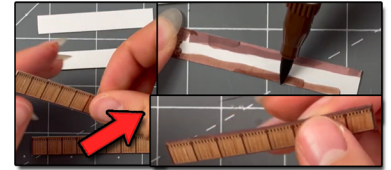
**STEP 24-** Then place the saloon illusion rooms right behind the window openings, secure with hot glue. Grab the saloon back of front wall piece. and glue in here, where the red circle is above. Use hot glue. After, place and secure the roof on top.



**STEP 27-** Next, grab the mercantile front wall. Secure it on to the correct base. Secure the side walls and back wall on. Then place the illusion rooms behind the windows. After, place the roof on top. Secure with hot glue.



**STEP 28-** Now grab the saloon awning, glue it right in the middle and above where the door is. Grab the red striped awnings and glue them above the front windows and back windows. For the tavern glue the awning above the door. And lastly glue the green striped awnings above the mercantile windows.



**STEP 22-** Then grab all the fences, flip over and touch up the white outer edges with a marker, like shown in the image above. Once they are all touched up, grab a matching pair and glue them on to backs of each other using hot glue. Put aside for later.



**STEP 25-** Now secure the barber shop front wall on to the barber shop base, facing the sidewalk side. Line it up with the white line. Place hot glue behind the wall. Hold upwards until dry. Glue the side walls on to the front wall using the glue tab. Then glue the back wall on, gluing one side at a time to avoid any unevenness. Place the illusion rooms inside. Then place the roof on top and secure.



**STEP 29-** For the last step, glue the fence around the patio area on the base, connecting it to the tavern and barber shop sides. Then create small bushes around the base with the included landscape moss. Use hot glue to secure.

# GO TO THE LAST PAGE TO SEE THE FINAL RESULTS





# ASSEMBLY INSTRUCTIONS

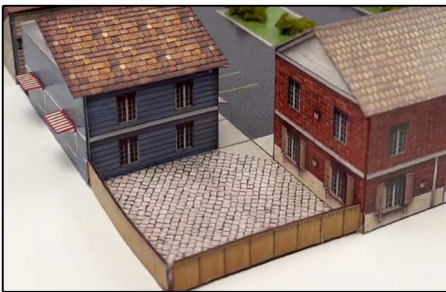
*Photo Real Scale Building Kit by*

**INNOVATIVE**  
HOBBY SUPPLY

**Starter  
Small  
Town**



Front of Buildings



Left Side of Building



Right Side of Building



Rear of Buildings