



# ASSEMBLY INSTRUCTIONS

Photo Real Scale Building Kit by **INNOVATIVE**  
HOBBY SUPPLY

## Train Station

### READ ALL STEP BY STEP INSTRUCTIONS

- A new alternative to plastic form scale building models!
- Photo Real Scale Building kits may be the most realistic kits available!
- Great for use on model dioramas, slot car, and train track layouts!
- Designed using real building elements for the most realistic appearance



### Footprint Dimensions

Model Base  
8" x 11"

Train station  
Foundation 7.75" x 1.75"  
Town hall 5.75" X 1.75"

*All scale building kits offer many optional features, for a variety of creative ways to complete each project!*

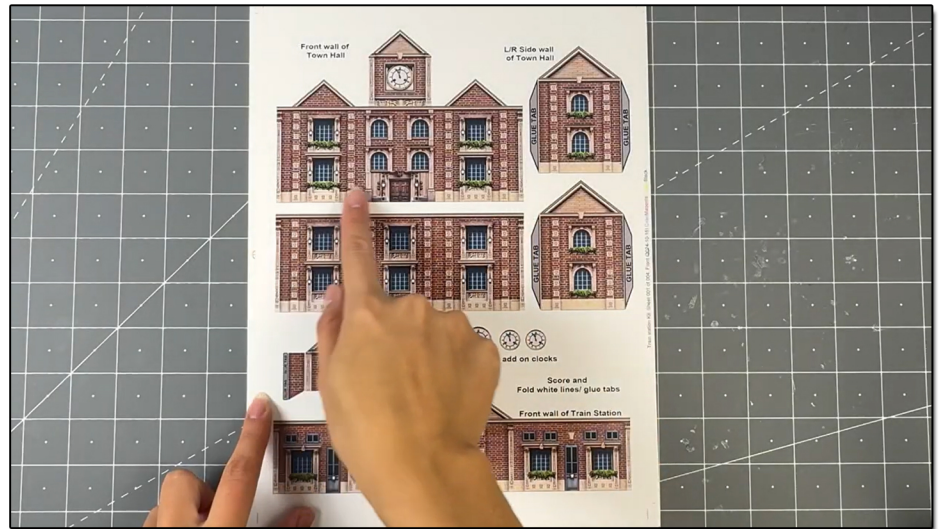
**Cut out all components and place in a safe area and place all parts in a tray so you do not lose any.**

Free replacement parts are available call: 866-712-4059



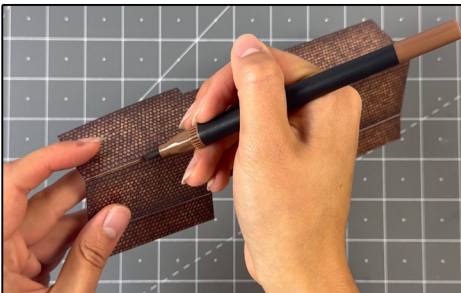
### STEP 1 - Collect the correct tools.

For best results, we suggest you gather at least the most basic tools you will need to complete assembly. While you may find more tools that will help you achieve outstanding results, we suggest you start with the following: Hot glue gun, scissors, variety of water based colored markers, tweezers, straight edge rulers, hobby knife, instant setting high strength hobby glue Plus 4ea, Hot Glue Sticks



STEP 2 - Empty contents of the kit, carefully cut out all the individual parts to be assembled with a Scissors. The most precise cuts you can make will result in a dramatically better looking finished project. Use smooth long scissor strokes on the bigger parts.

STEP 4 - **Scoring.** Using a Hobby Knife (see picture) and a straight-edge ruler, apply lighter Blade pressure onto the marked fold line on the part you wish to fold. Scoring along these lines to be bent makes bending all printed parts easier, and results in a much cleaner looking fold. Bend parts using the length of your straightedge ruler or a desk edge  
Scoring is an essential skill. Practice on Scrap piece.

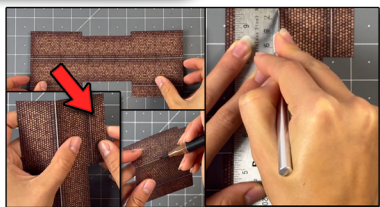


STEP 3 - With appropriate color markers, detail the edges of all the parts you cut out. This will result in a finely finished project once assembled.

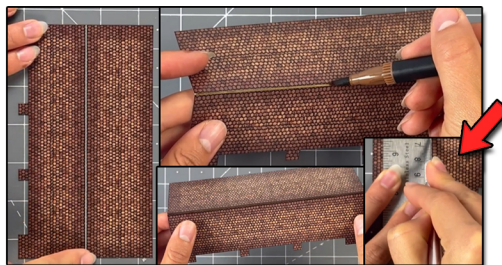




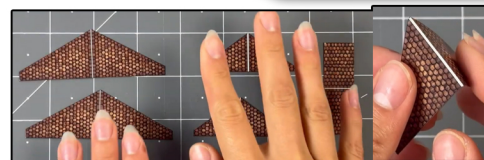
**TIP: Look Ahead At All Photos For Extra Guidance**



**STEP 5** - With scale building kits, there is usually no correct place to begin. In this case, we'll start by prepping the train station roof. Score the white middle line and the two smaller lines below with a hobby knife and ruler. After fold the bigger sides slightly downwards. Then fold the two smaller tabs slightly upwards. Touch up the white outer edges and the scored seams with a brown watercolor marker.



**STEP 6** - Next, with the town hall roof, score the white middle line with a hobby knife and ruler. Fold slightly downwards. After folding touch up with a brown watercolor marker, and put aside for later.



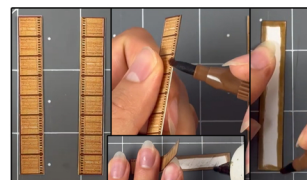
**Step 7** - After, collect all of the smaller dormer roofs and the town hall clock roof. Score the white middle line with a hobby knife and ruler for all of them. Fold them downwards. Then touch up with a brown watercolor marker. Put aside for later.



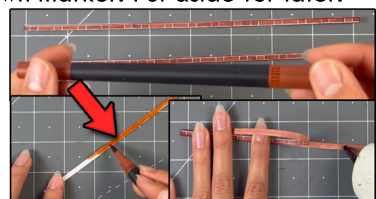
**STEP 8** - Grab both of the illusion rooms and score the two white lines on the side with a hobby knife and ruler. Fold the side tabs slightly inwards. Touch up the seams with a brown marker. Put aside for later.



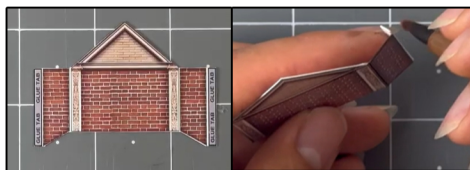
**STEP 9** - On to the next step, collect both train station side walls and the town hall side walls. Score the glue tabs with a hobby knife and ruler. Fold tabs 90 degrees inwards. Touch up the scored seams and outer edges with a brown marker. Put aside for later.



**Step 10** - Now, collect all the fences, touch up the outer edges with a brown marker, then flip over so the white side is facing you and color the white outer edges with the same marker. Do this to all of them. Then glue the matching fence sides on to the backs of each other (facing the right direction) with hot glue. Once both fences are prepped, put aside.



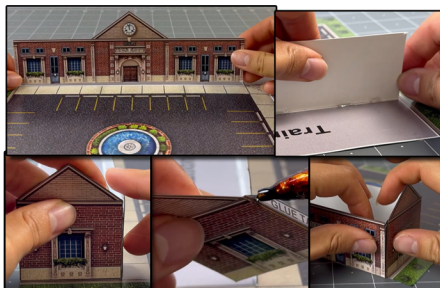
**STEP 11** - Grab the fountain wrap around walls and touch up the outer edges with a corresponding marker. Flip over and color the back sides with the same marker, glue the walls on to the backs of each other with hot glue, put aside for later.



**STEP 12** - After, grab the town hall back clock wall and score the white lines with a hobby knife and ruler. Fold the tabs inwards. Color the edges and seams with a brown marker. Put aside for later.

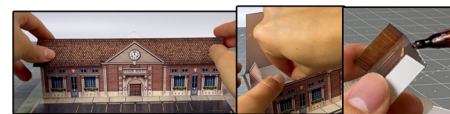


**STEP 14**- For this step, grab the 2D clocks, touch up the outer edges with a gray marker. Then glue them on top of the original art on the Town hall front wall and the Train station front and back



**STEP 15**- Grab the front wall of the train station, line it up to the train station base white line facing the fountain. Place small amounts of hot glue behind the wall, and hold upwards until dried completely. Then glue the side walls on to the front wall using the closest glue tab near the front wall. Use hot glue, and line up evenly. After glue the back wall on to the side walls, one side at a time.

**STEP 13** - Next, grab the back train station wall. Cut out the blue area shown in the image above with a hobby knife and ruler for both ticket windows. Avoid cutting the walls and window frames. Flip over and touch up the cut edges with a marker. Then grab the window wrapper material, and cut to the right dimensions to cover the part we cut, but leaving a 1/4 inch opening on the bottom. Take the wrapper off both sides of the material until see through. Apply on top and secure with scotch tape. Make sure the tape is not visible from the front side. Put aside for later.

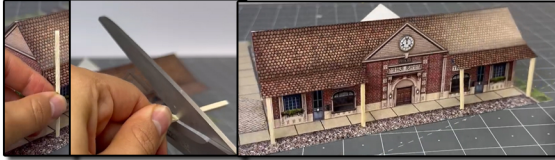


**STEP 17**- Before gluing the train station roof on, place each illusion room behind the ticket windows close up. Secure with hot glue on the bottom. Make sure the roof hang off tabs are facing the back side of the station. Secure with glue underneath carefully.

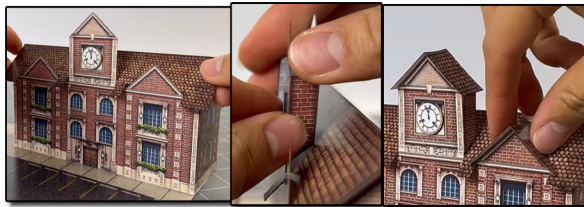
**STEP 16** - grab the base add on, line it against the back of the train station, place a piece of tape underneath both bases to connect.



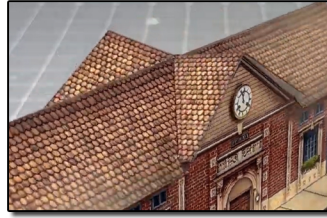




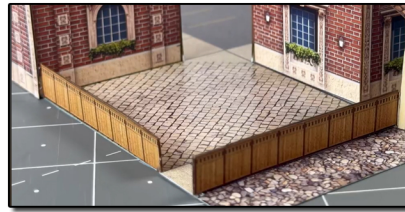
STEP 18- After, grab the wooden roof supporters, cut to desired height for underneath the back side roof. Cut four pieces the same height. Place and secure them right underneath the outer corners of the roof hang out parts.



STEP 21- Now place the roof on top, secure on to building with hot glue. Place the small dormers on top and the town hall clock roof. Use hot glue to secure.



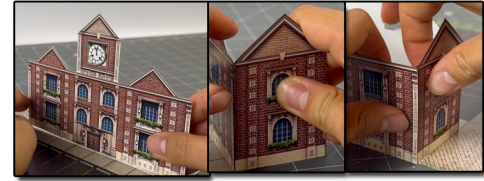
STEP 19- After, grab station dormer roofs and glue them on to the building here like the image above.



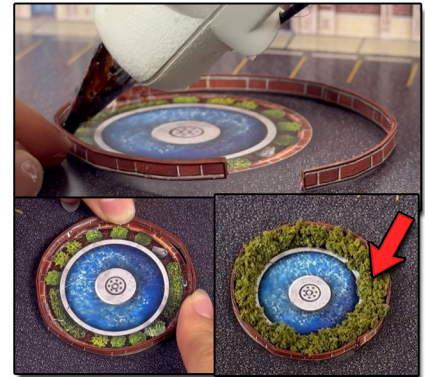
STEP 22 - Grab the fences, and glue the correct side fence on to correct side, 2 is the town hall and one is the train station. glue two against the town halls side wall like the image above. Then glue the other one against the train station wooden roof supporter. Use hot glue.



STEP 24 - Next grab plastic food wrap from your kitchens pantry, gently pull out 4 inches worth of wrap. Cut carefully without really touching it. Grab the middle of it, and pull it towards you. Drag your hand from where you other hand is holding to the other side. Cut the top part (opposite side where you pinched it in the middle) to the desired height you want your fountain to be. On the top of it create slits with the scissors, carefully and thoughtfully unfold the slits you made to imitate water. Cut the bottom off a little to create a flat edge, place glue there, then place in the middle of the fountain.



STEP 20- Now place the front wall town hall on the town hall base, facing the fountain. Place glue behind, hold until dry. Then secure the side walls on to the front wall using the closest glue tabs. After glue the back wall, gluing one side at a time.



STEP 23 - Grab the fountain wrap around wall and curve it with your fingers until its loose and flexible. Then wrap it around the fountain. Glue one small section at a time, hold then move on to the next section until the whole thing is wrapped. Place the glue towards the inside part of the fountain as it will be covered later on. Cut the extra wall off and glue together. Place landscape moss around the inside of the fountain like the image above. Add bushes around the base too.





# ASSEMBLY INSTRUCTIONS

*Photo Real Scale Building Kit by*

**INNOVATIVE**  
HOBBY SUPPLY

**Train  
Station**



Front of Building



Left Side of Building



Right Side of Building



Rear of Building

